

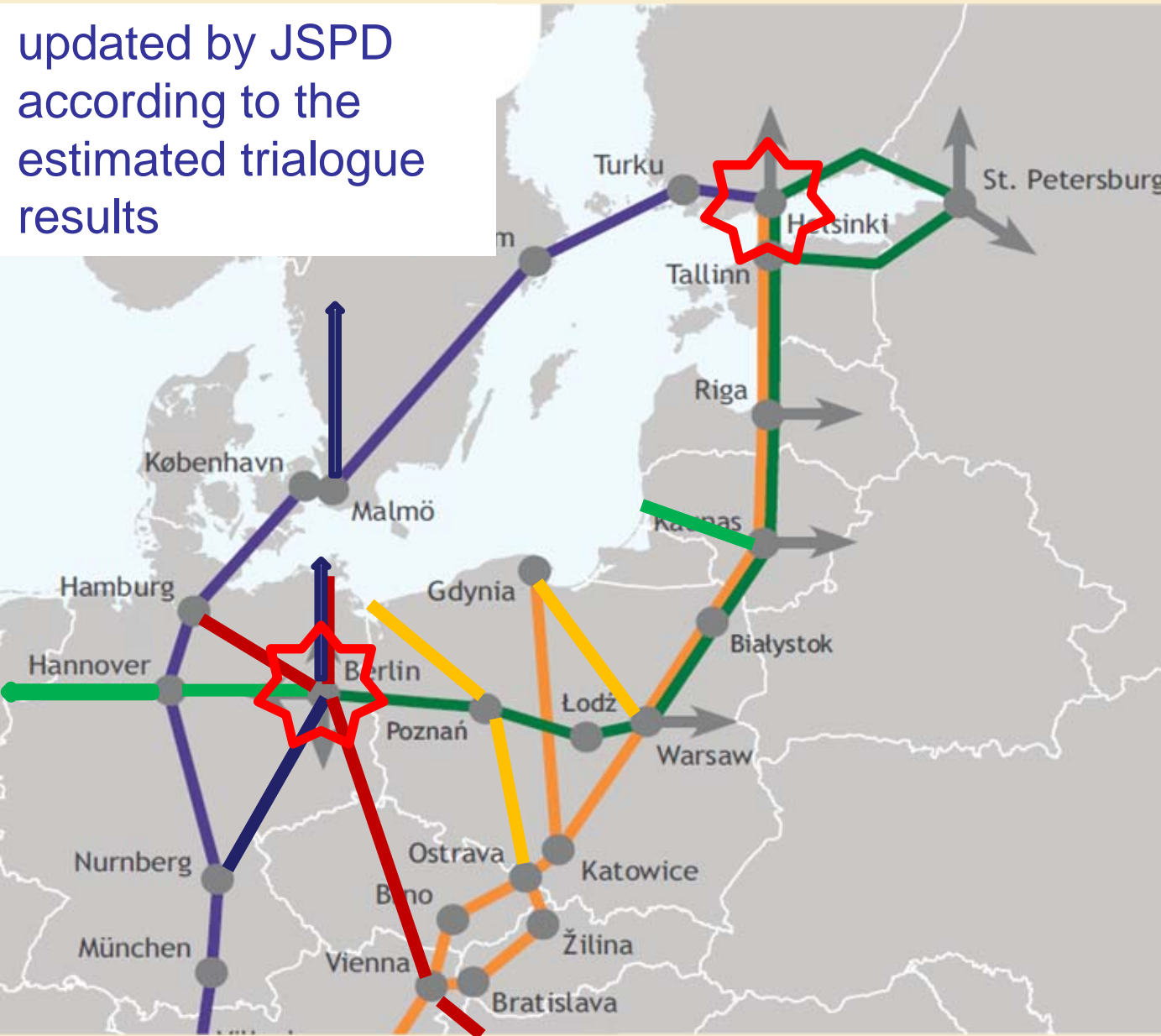
Berlin High-level Dialogue on Implementing Rio + 20 Decisions on Sustainable Cities and Transport

Kathrin Schneider

Secretary of State, Ministry for Infrastructure and Agriculture, State of Brandenburg

www.mil.brandenburg.de

updated by JSPD
according to the
estimated triologue
results



As part of the
North Sea -
Baltic Corridor



As part of the
Scandinavian -
Mediterranean
Corridor

Lead Partner

**Baltic - Adriatic
Corridor**

**Orient - East Med
Corridor**





Global Container Flows from Asia

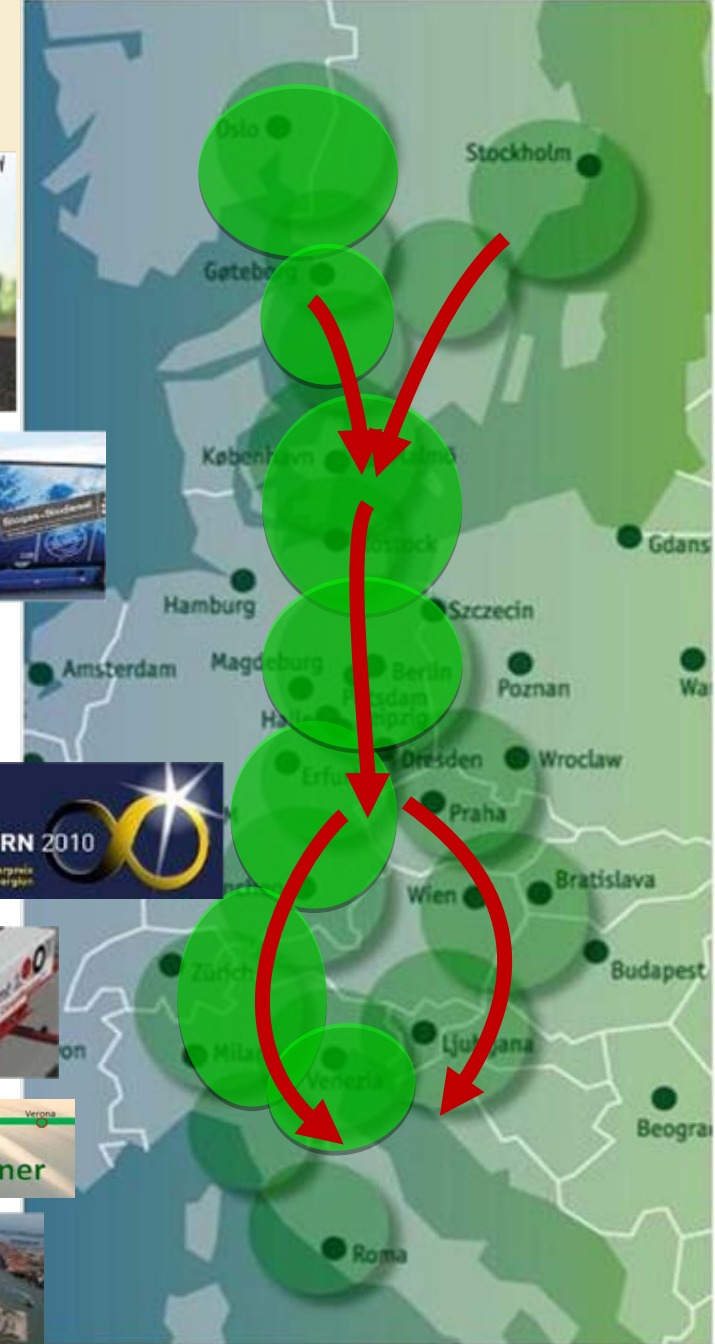


..... 4000 km less or more, by road or by rail?

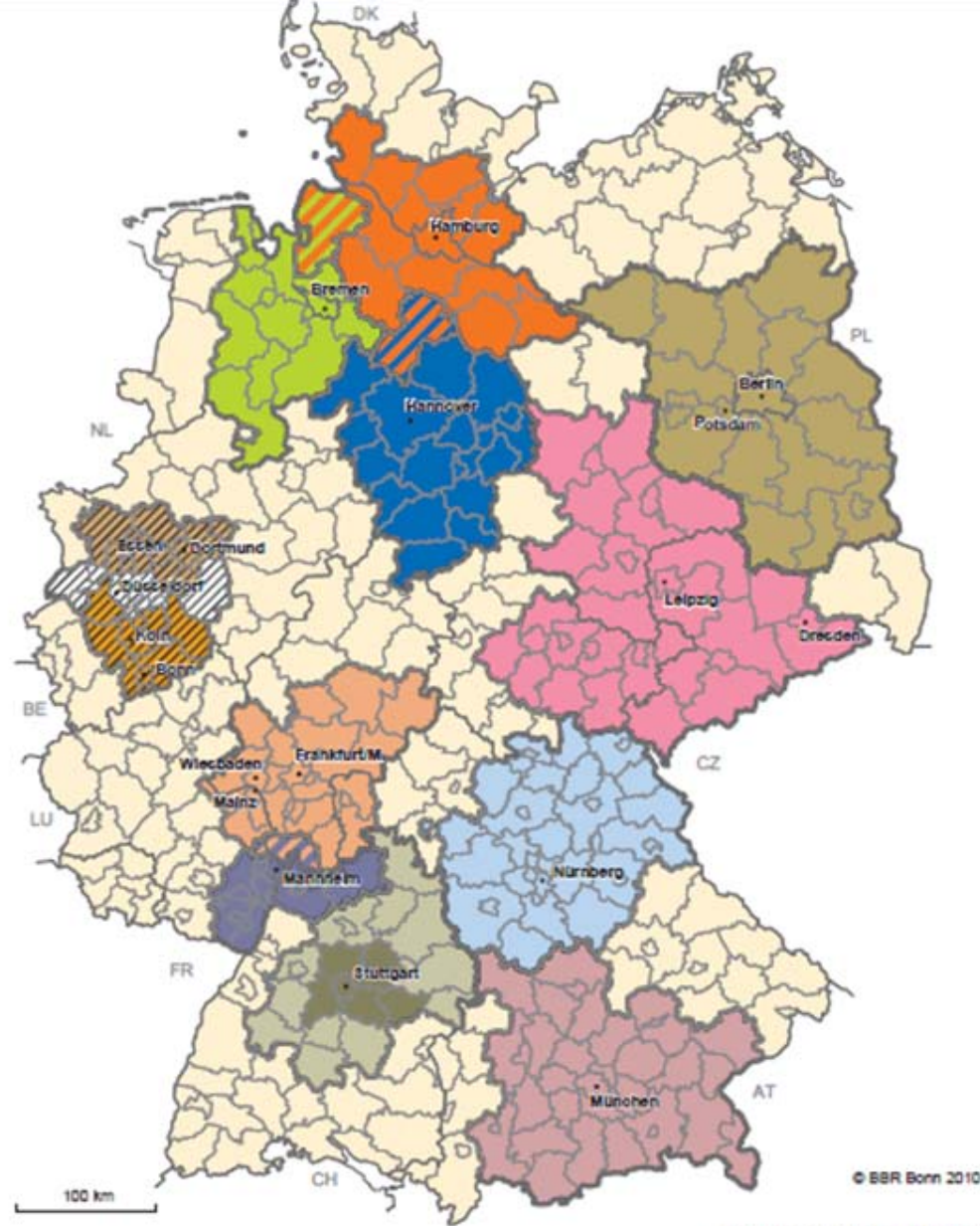


A Chain of Green Pearls

- Oslo: Electro mobility
- Gothenburg Biomass Gasification
- Scandinavia – Germany and further south:
Blocktrains and Biogas HGVs
- Crossing the Baltic Sea :
Greening Ports and Ferries
- Berlin – Brandenburg: Guiding Star of Renewables
and Show Case for Electro Mobility
- Sachsen – Leipzig: New Transshipment
Technologies
- Austria – Italy: The Comprehensive
Brenner Approach
- Port of Venice: Green Port Conference 2011



Metropolitan Regions in Germany 2010

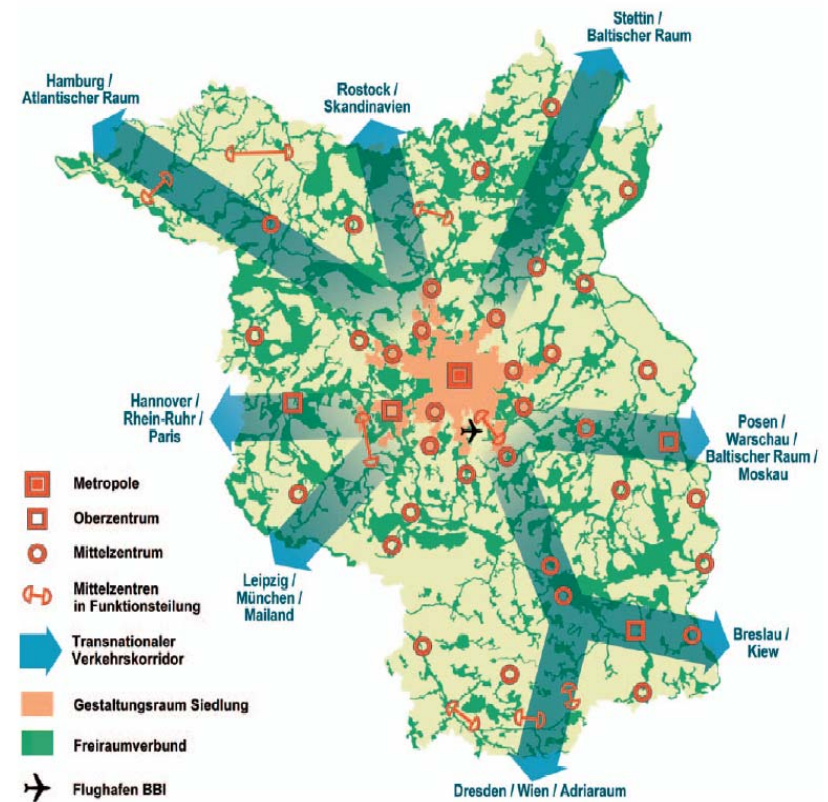
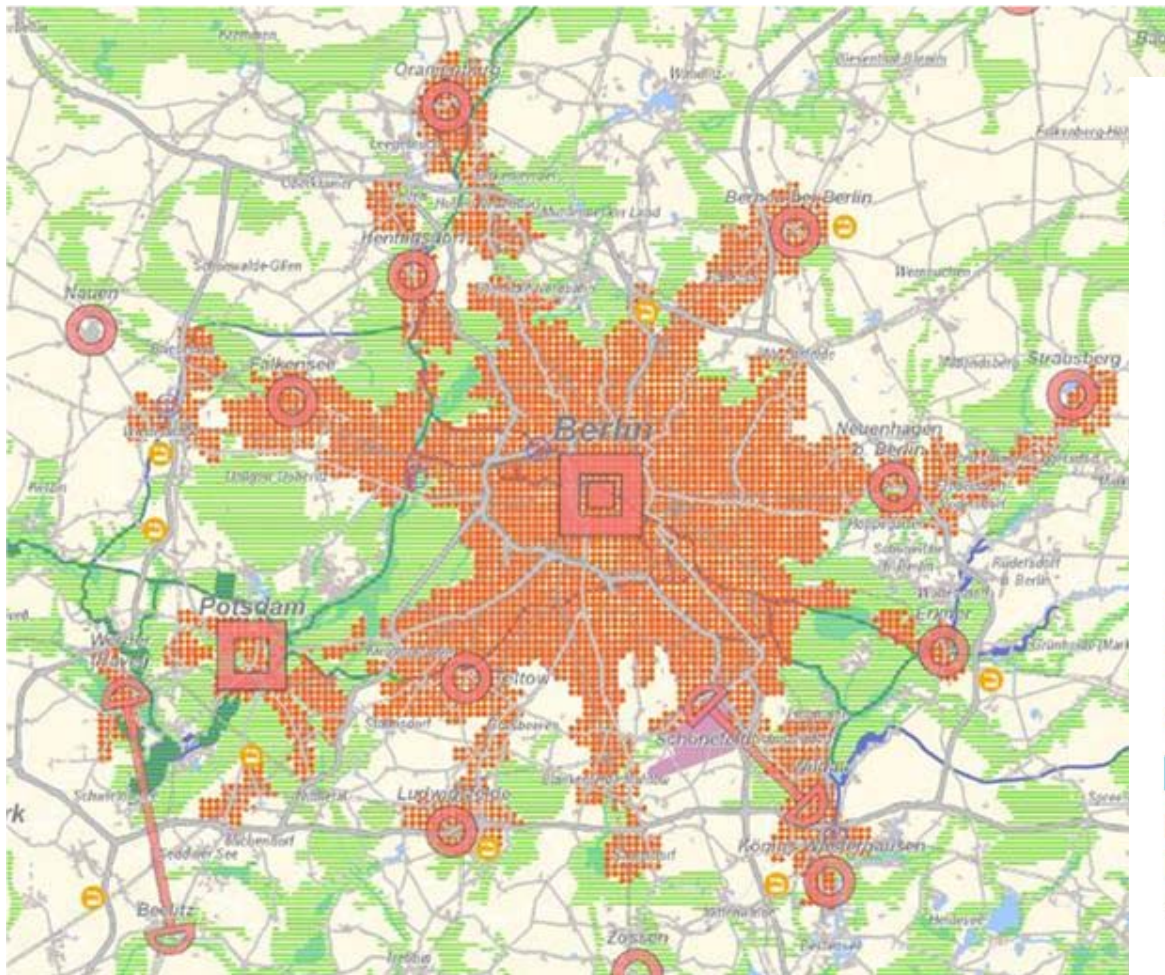


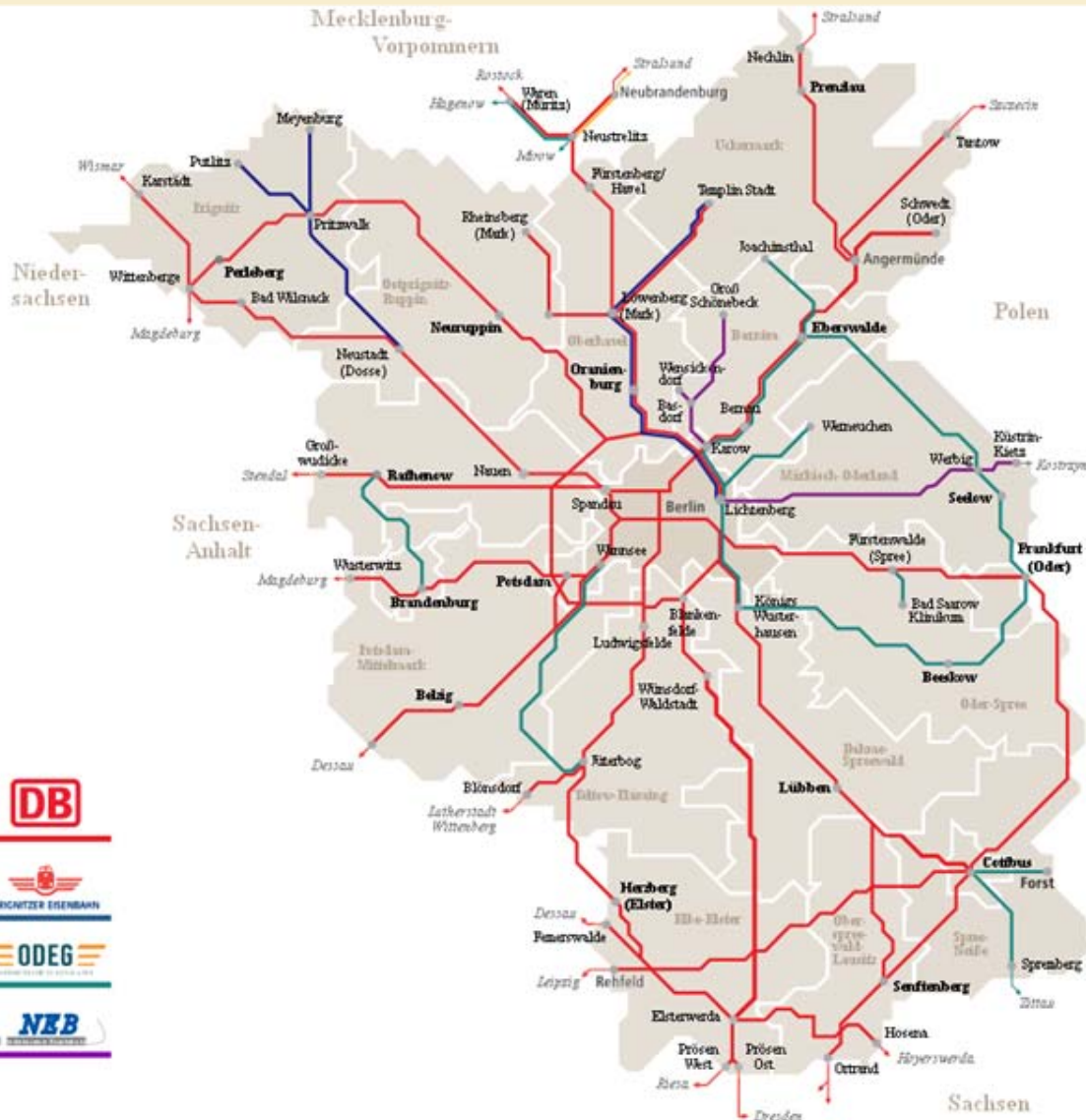
Europäische Metropolregionen in Deutschland, Stichtag 1.7.2010

- | | | |
|---|--|---|
| Hauptstadtregion Berlin-Brandenburg | Metropolregion Hamburg | Metropolregion Rhein-Neckar |
| Metropolregion Bremen-Oldenburg im Nordwesten | Metropolregion Hannover-Braunschweig-Göttingen-Wolfsburg | Europäische Metropolregion Rhein-Ruhr dar. Metropole Ruhr |
| Metropolregion Frankfurt/Rhein-Main | Europäische Metropolregion München | dar. Metropolregion Köln/Bonn |
| Metropolregion Mitteldeutschland | Metropolregion Nürnberg | Metropolregion Stuttgart dar. Verband Region Stuttgart |

Datenbasis: Angaben des Initiativkreis Europäischer Metropolregionen in Deutschland IKM
Geometrische Grundlage: BKG, Kreise, 31.12.2008

State Development Plan Berlin - Brandenburg





Joint public transport association

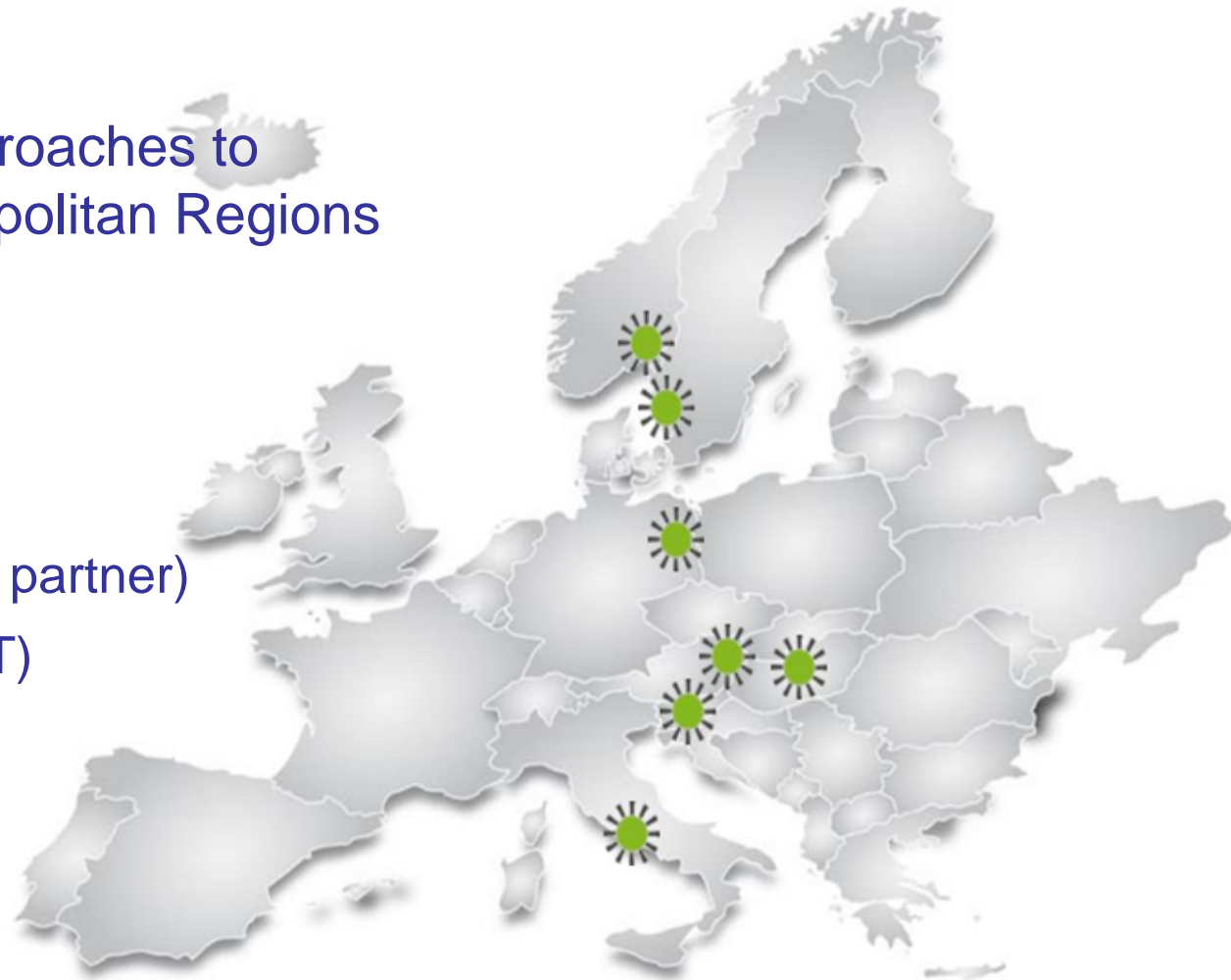


Interreg IVC-Project-

Catch-MR – Cooperative approaches to transport challenges in Metropolitan Regions

Partnership:

- Oslo/Akershus (NO)
- Gothenburg Region (SE)
- Berlin-Brandenburg (DE) (Lead partner)
- Metropolitan Region Vienna (AT)
- Ljubljana Urban Region (SI)
- Central Hungary (HU)
- Provincia di Roma (IT)



www.catch-mr.eu



**Thank you
very much
for your
attention**

