

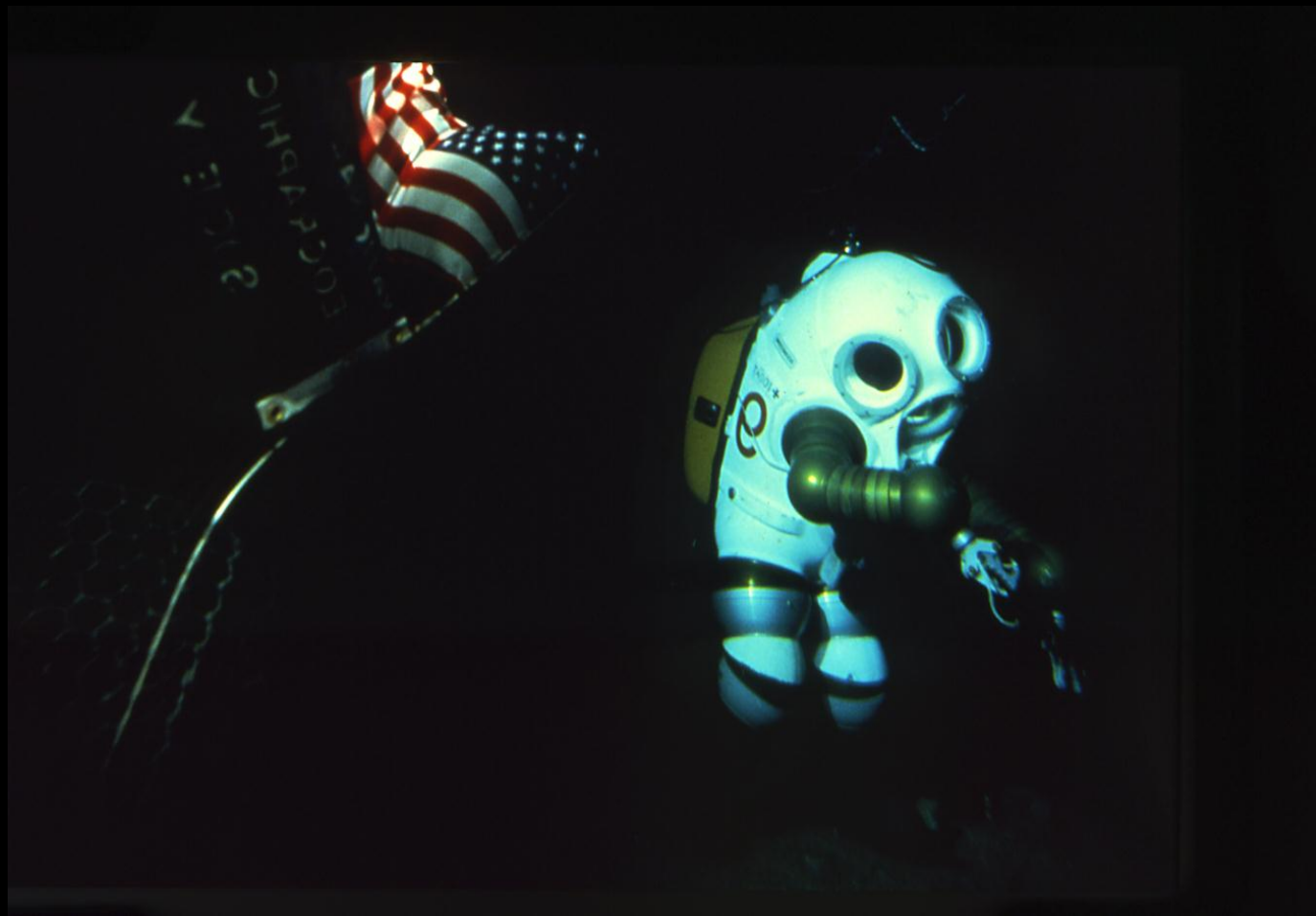






“The next 10 years may be the most important in the next 10,000—the best chance our species will have to protect what remains of the natural systems that give us life.”

Sylvia Earle, Ph.D.









World Population Growth

billions

10

8

6

4

2

0

1750

1800

1850

1900

1950

2000

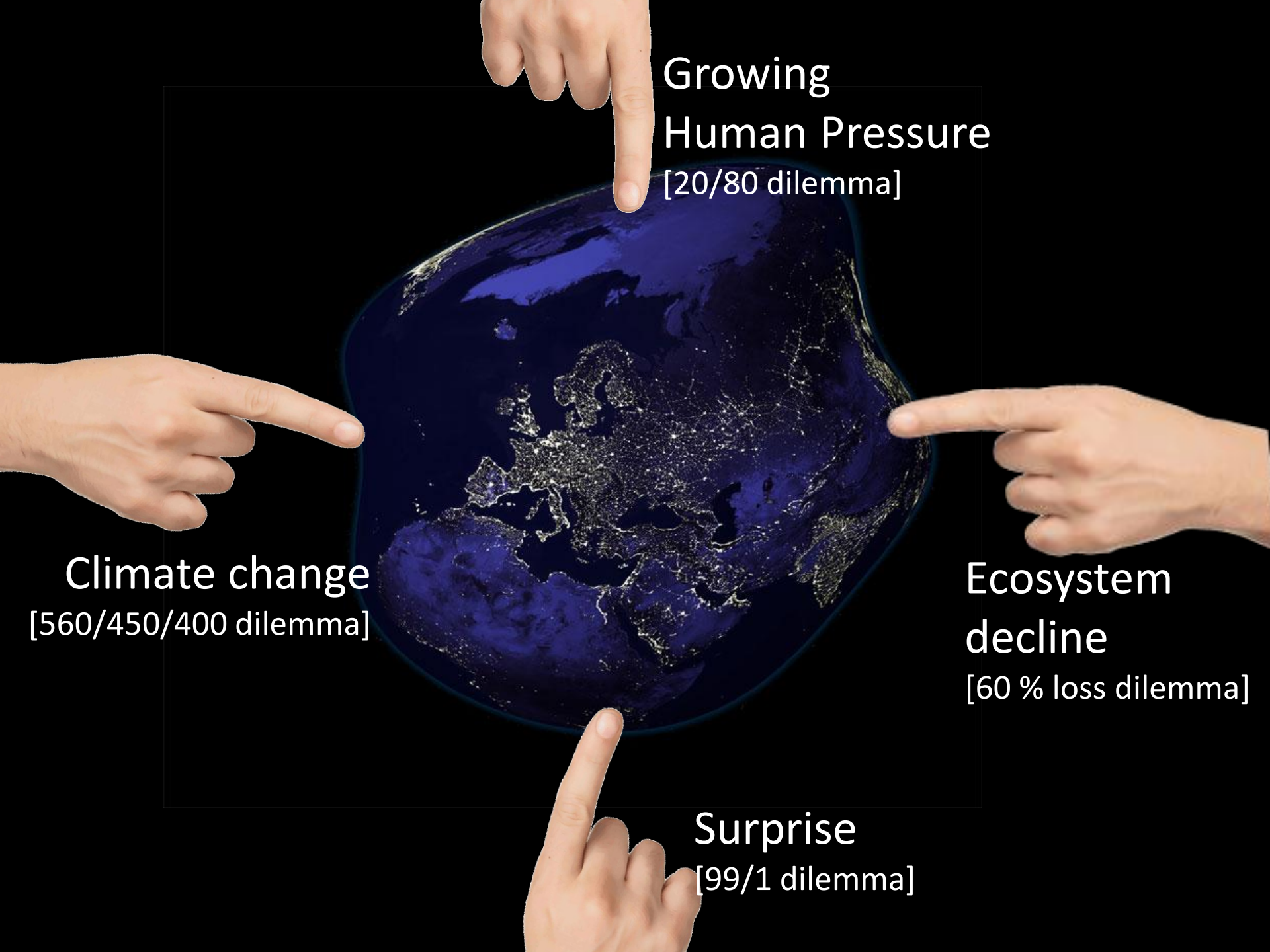
2050

- Developing regions
- Industrialized regions



World
Resources
Institute

Sources: United Nations Population Division and Population Reference Bureau, 1993.



Growing
Human Pressure
[20/80 dilemma]

Climate change
[560/450/400 dilemma]

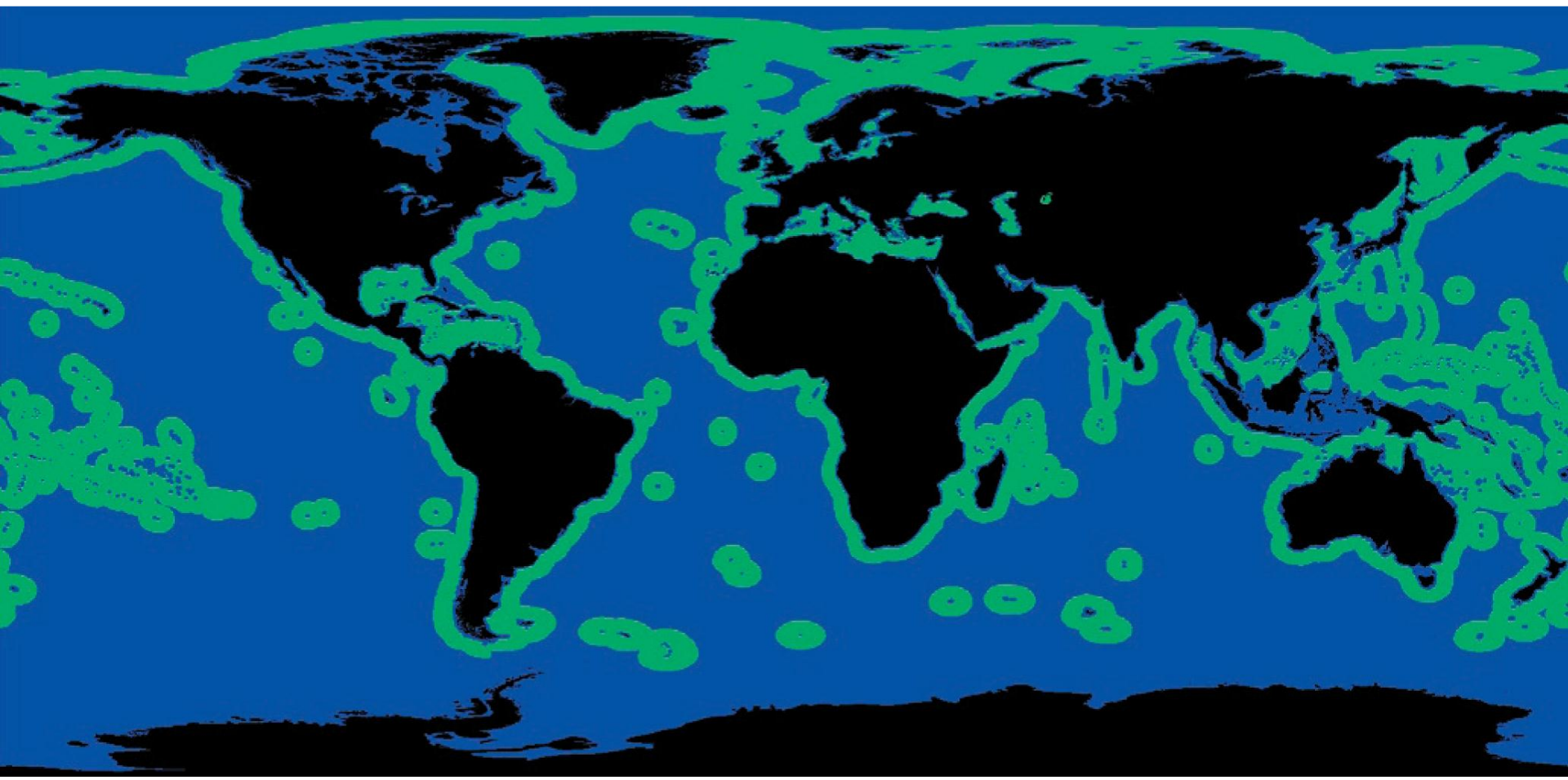
Ecosystem
decline
[60 % loss dilemma]

Surprise
[99/1 dilemma]

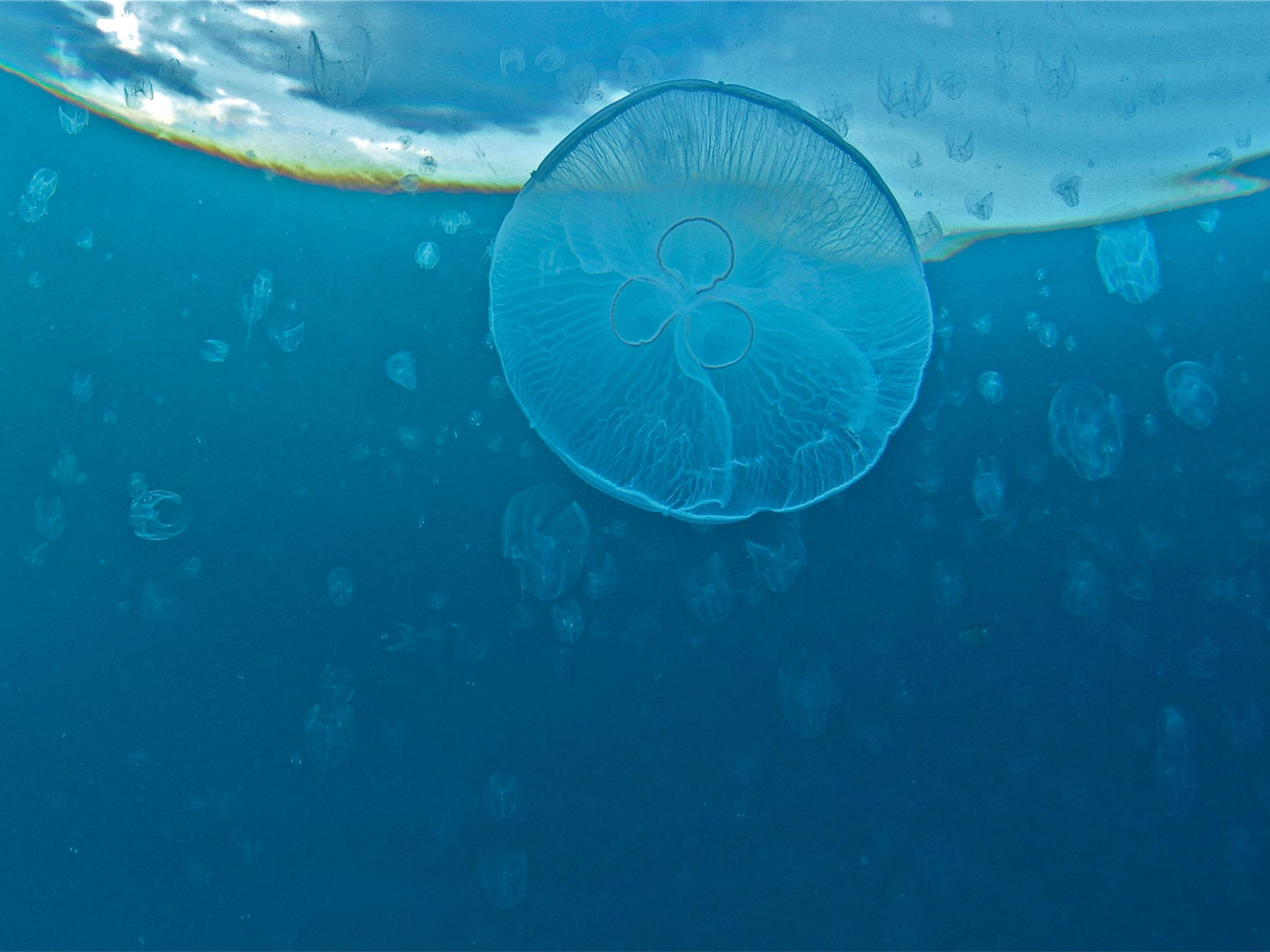


The Global Partnership for Oceans

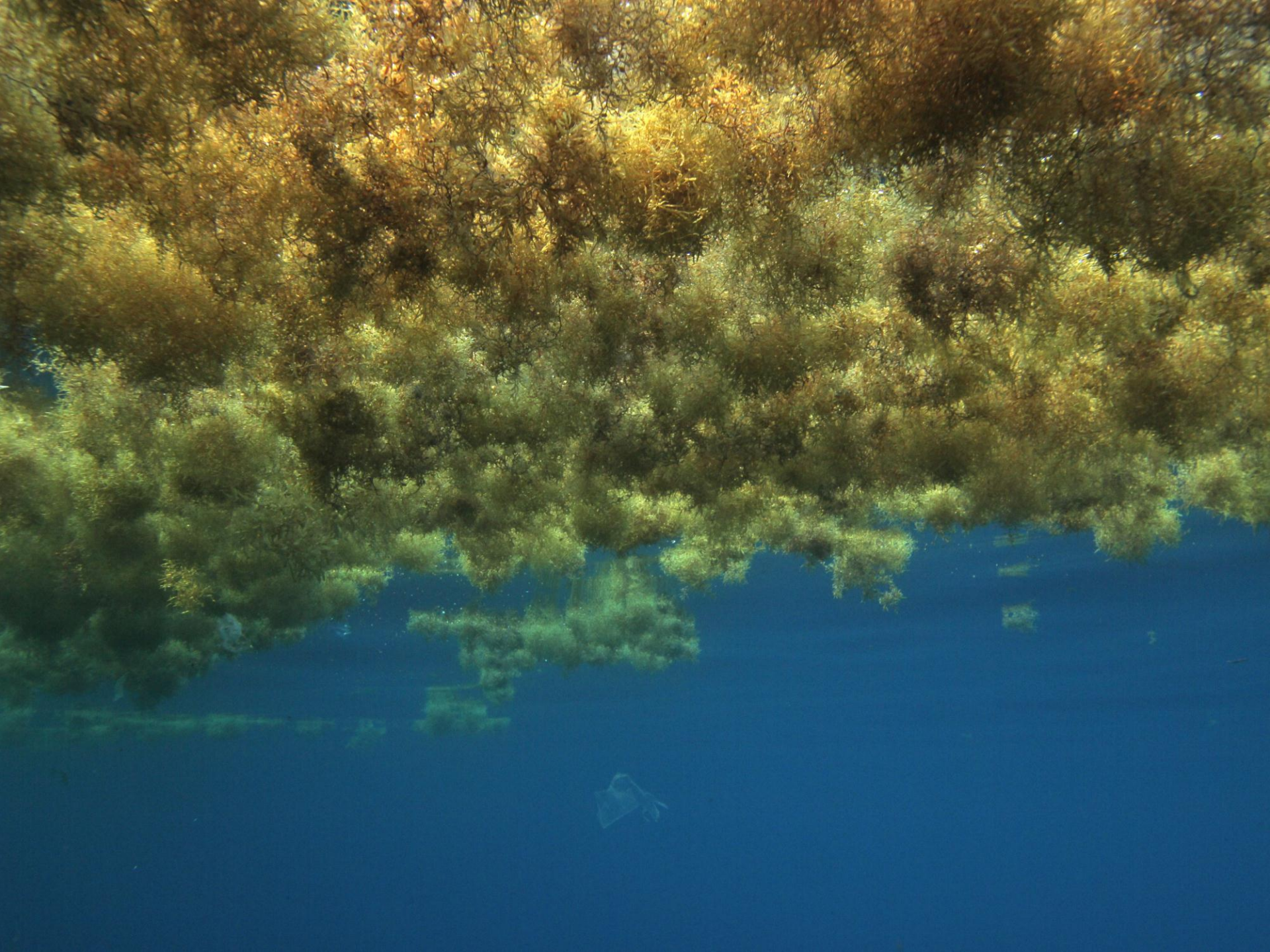
64% Of World's Oceans Lie Beyond National Jurisdiction



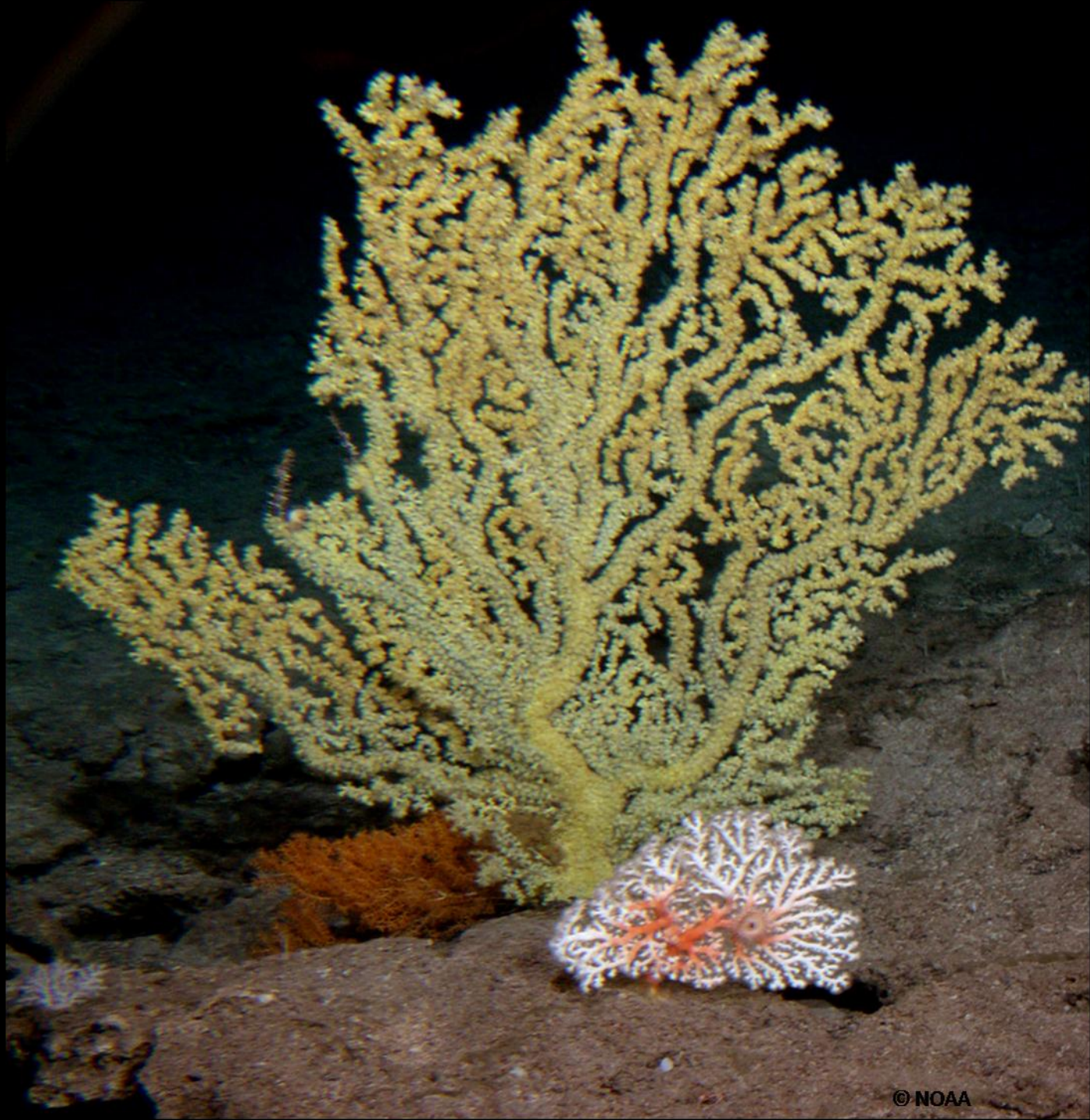


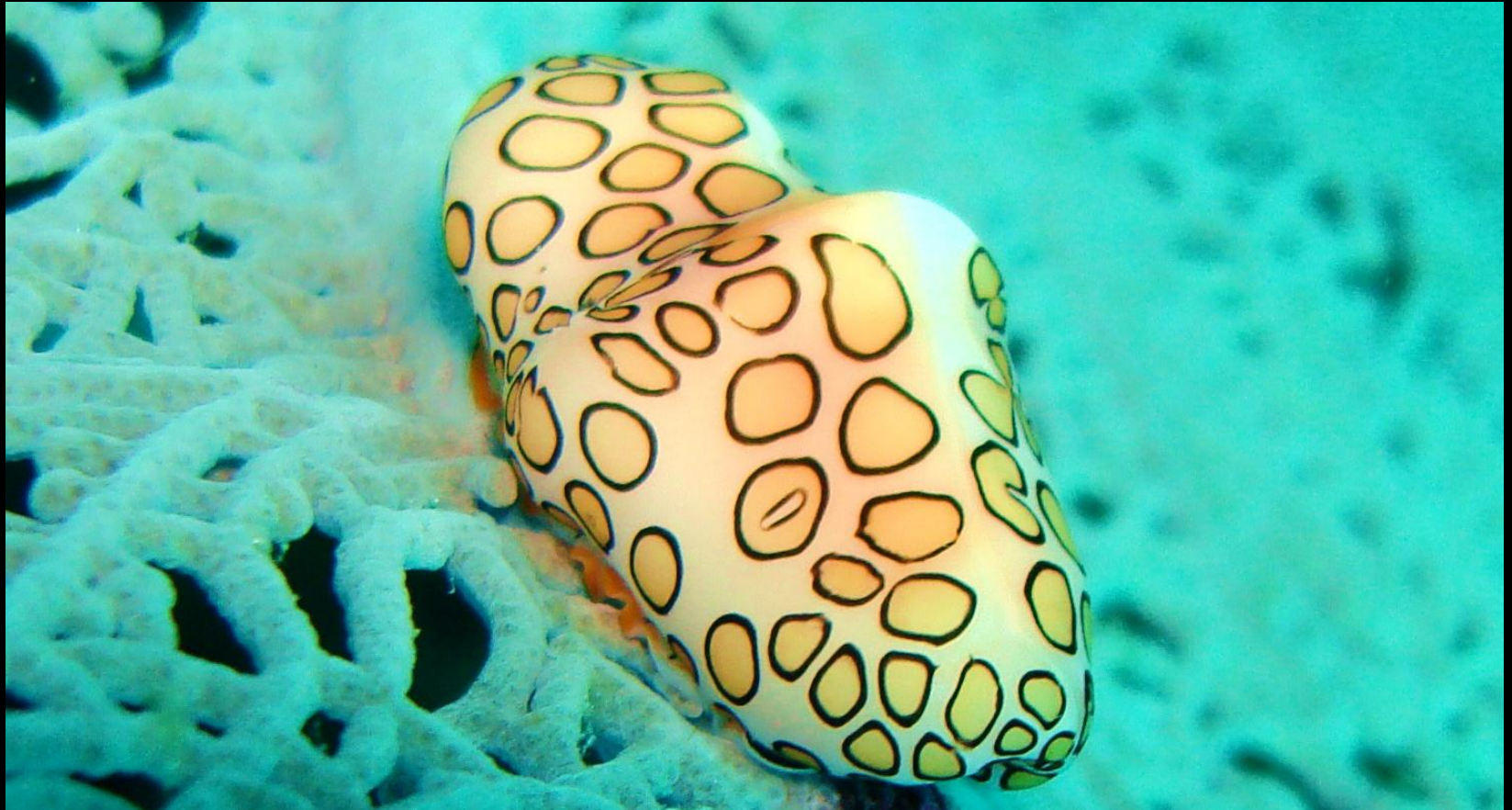


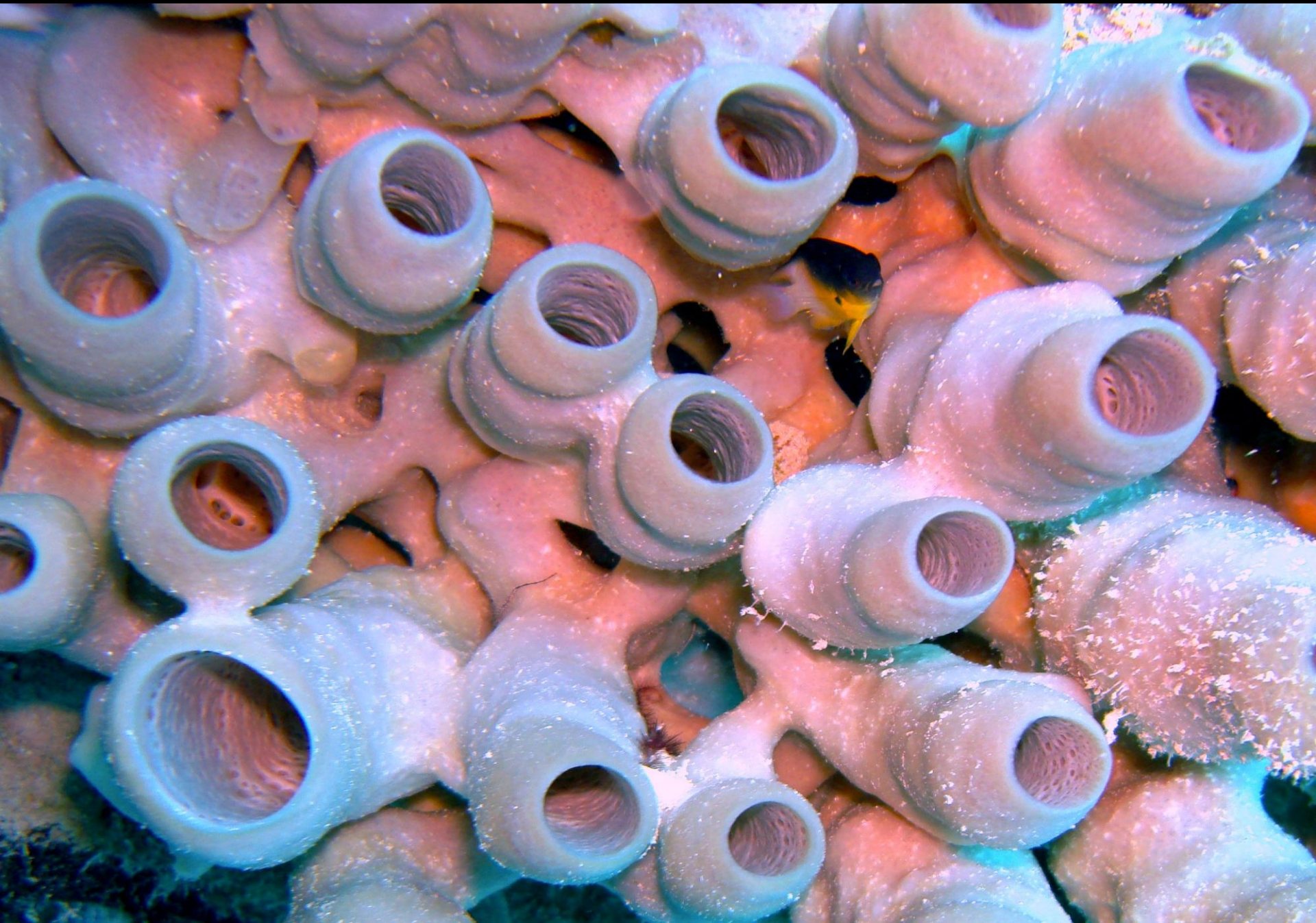




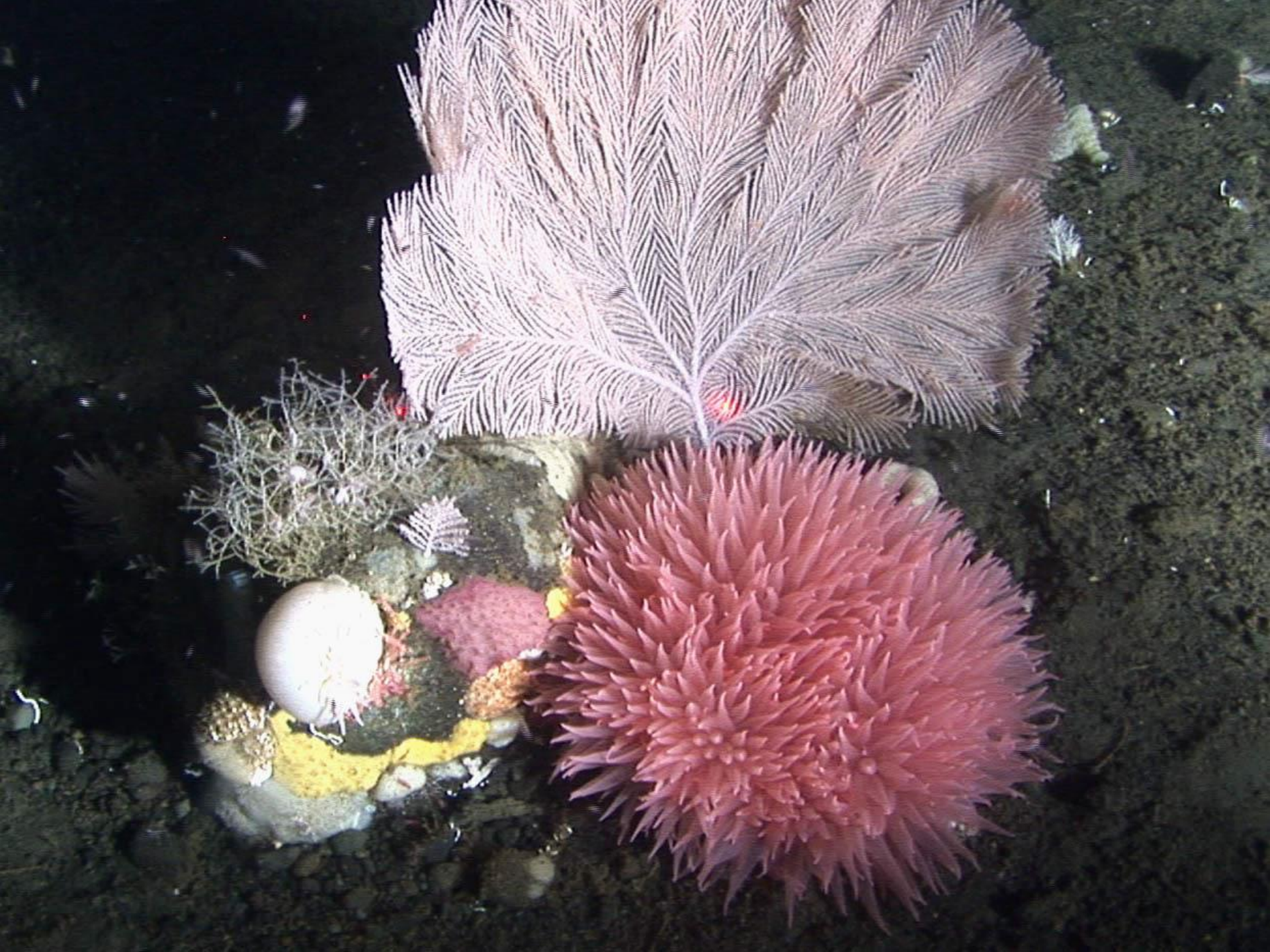


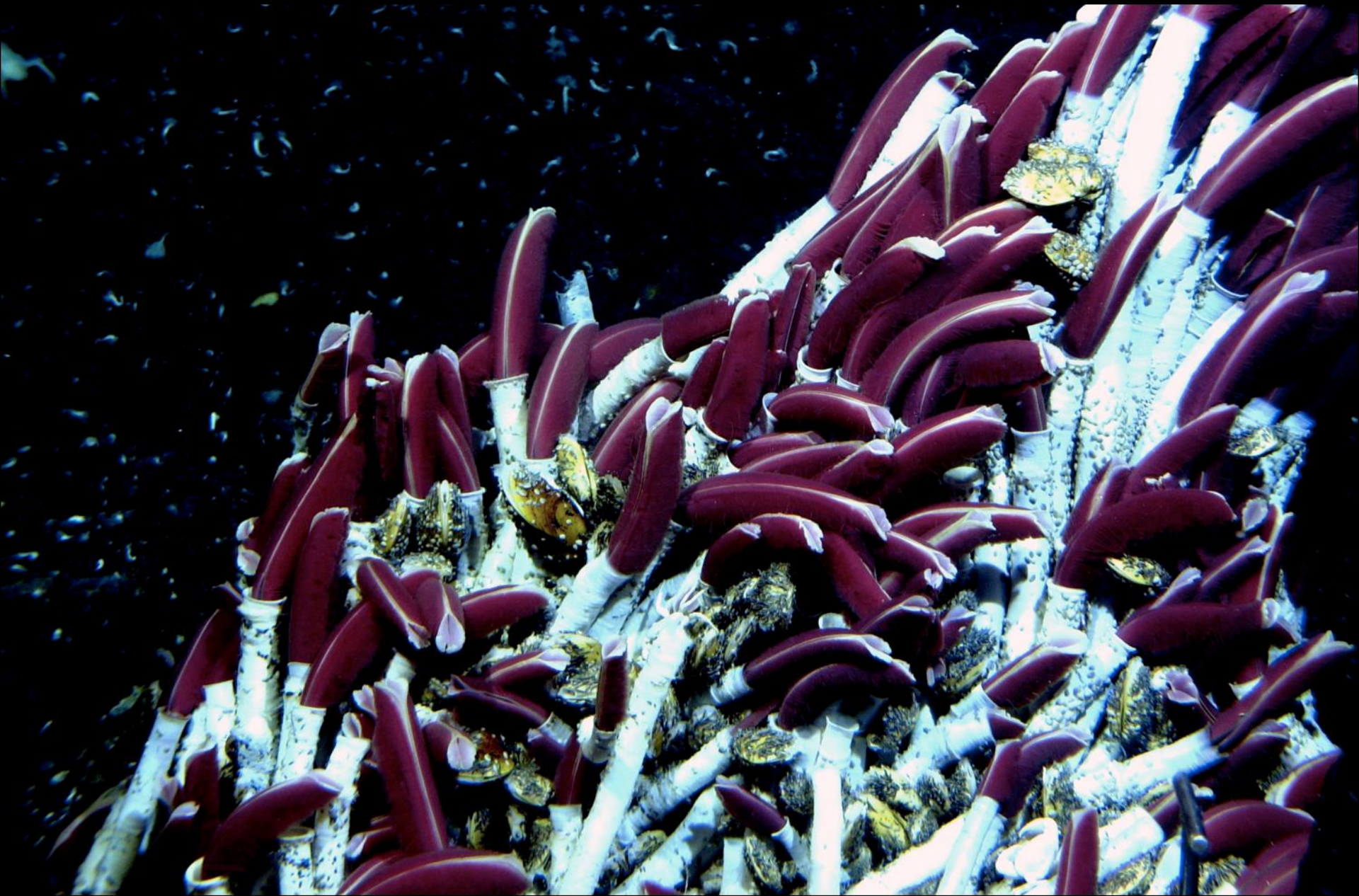


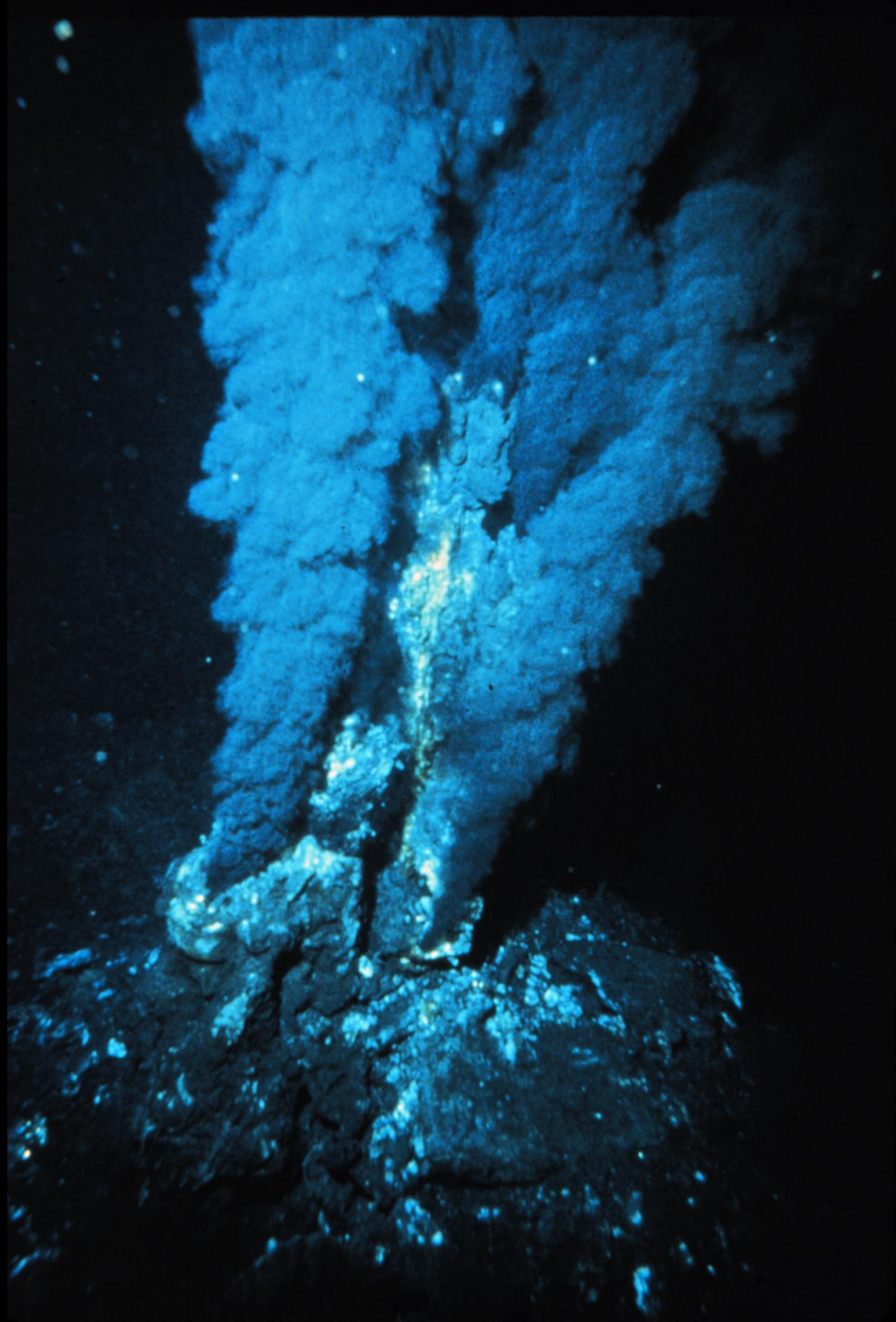










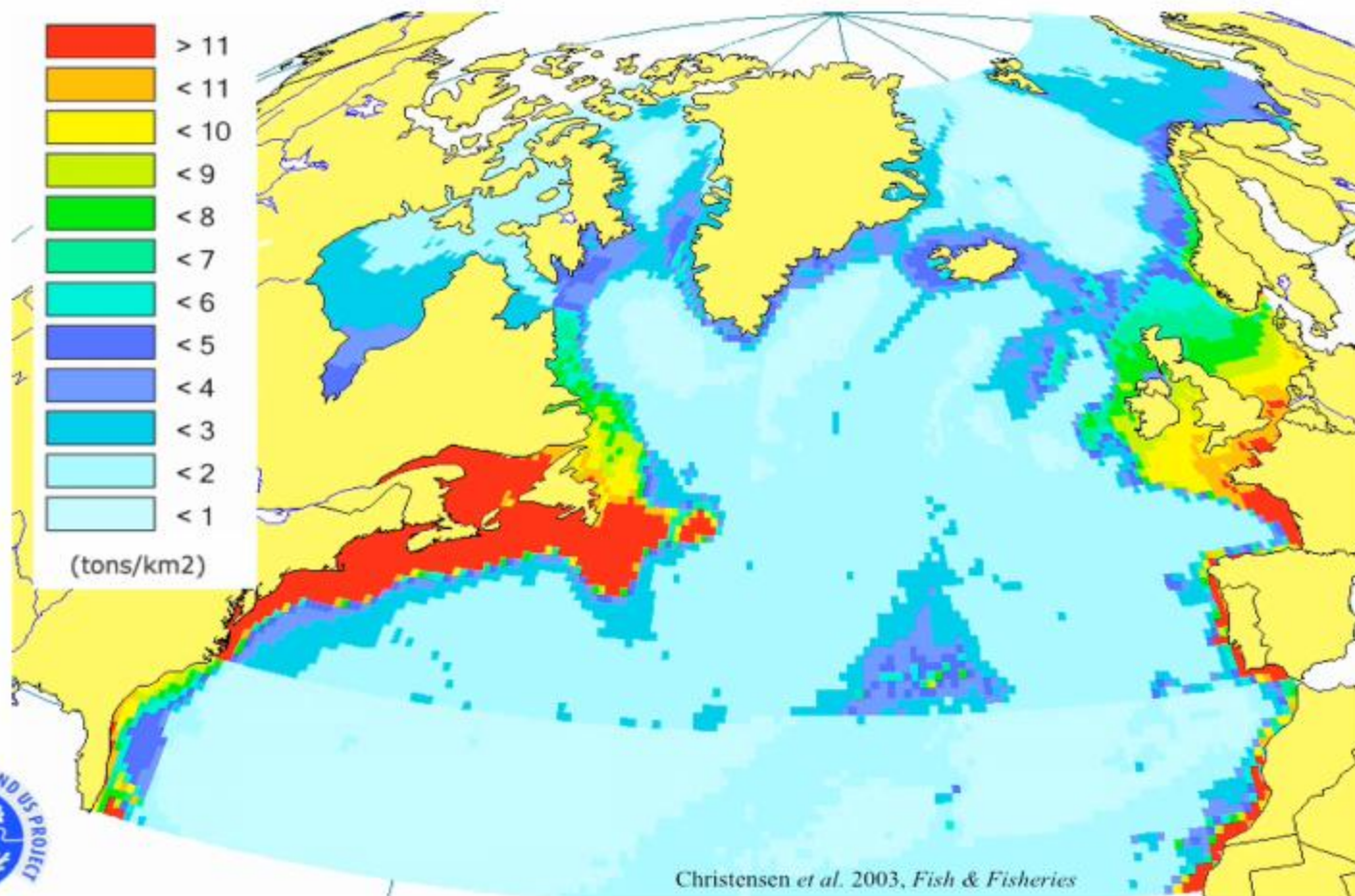




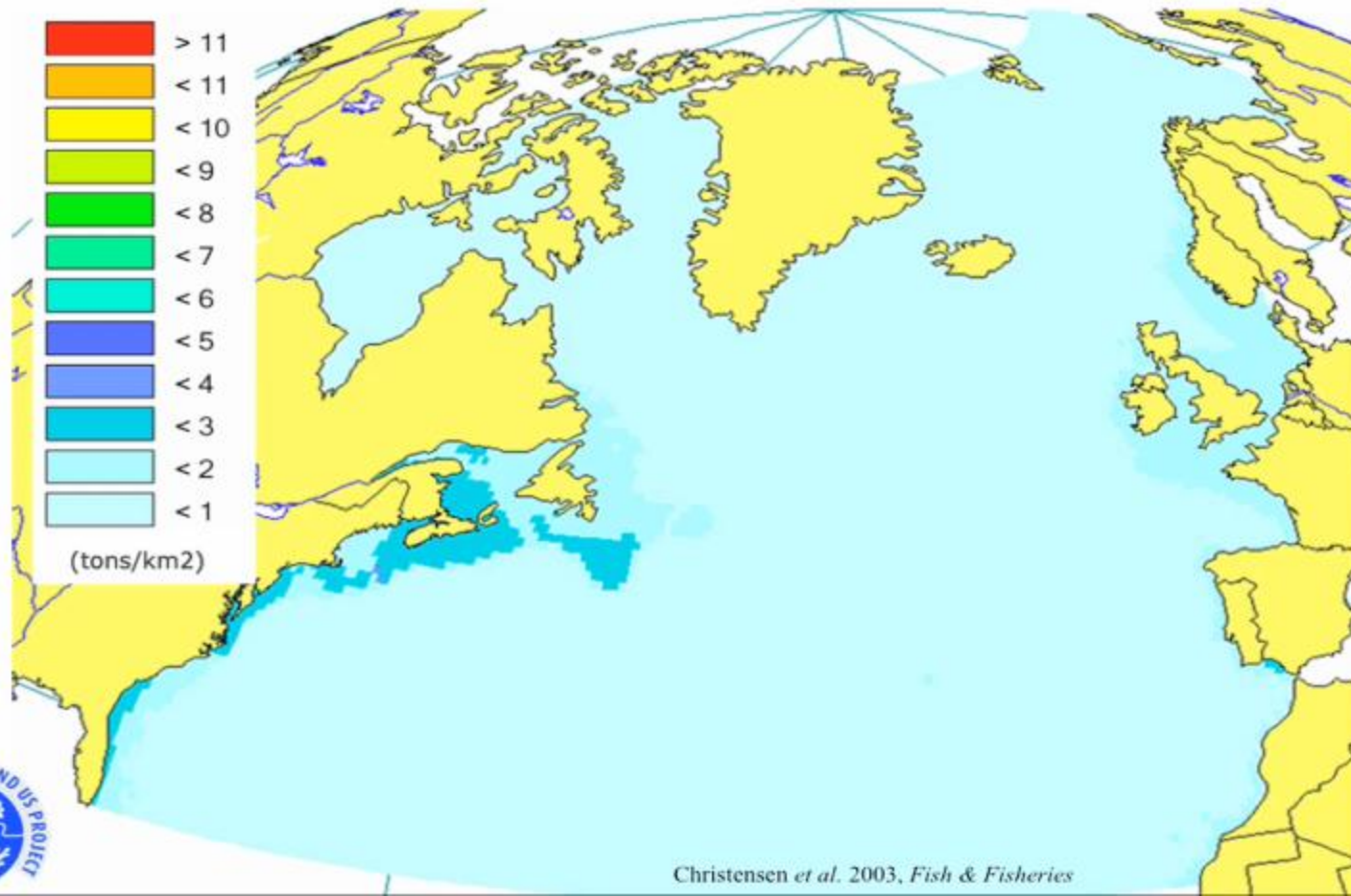




Biomass of table fish 1900



And in 2000...







塩本

新皮塩

塩本皮

つじ 伊勢大 味心

塩

皮

つじ 伊勢大 味心





















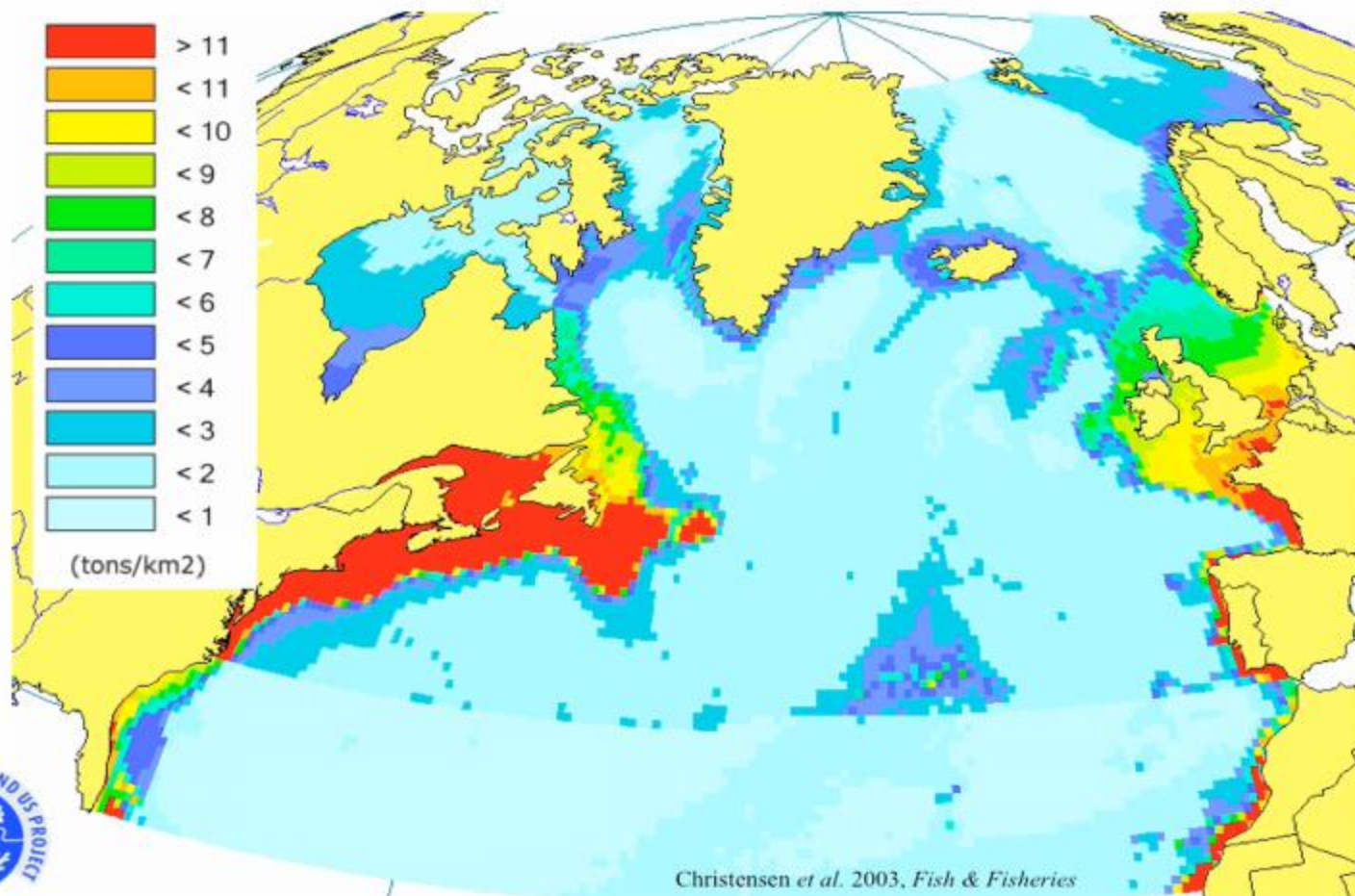




© Joachim Plötz/Alfred-Wegener-Institute



Biomass of table fish 1900



And in 2000...

