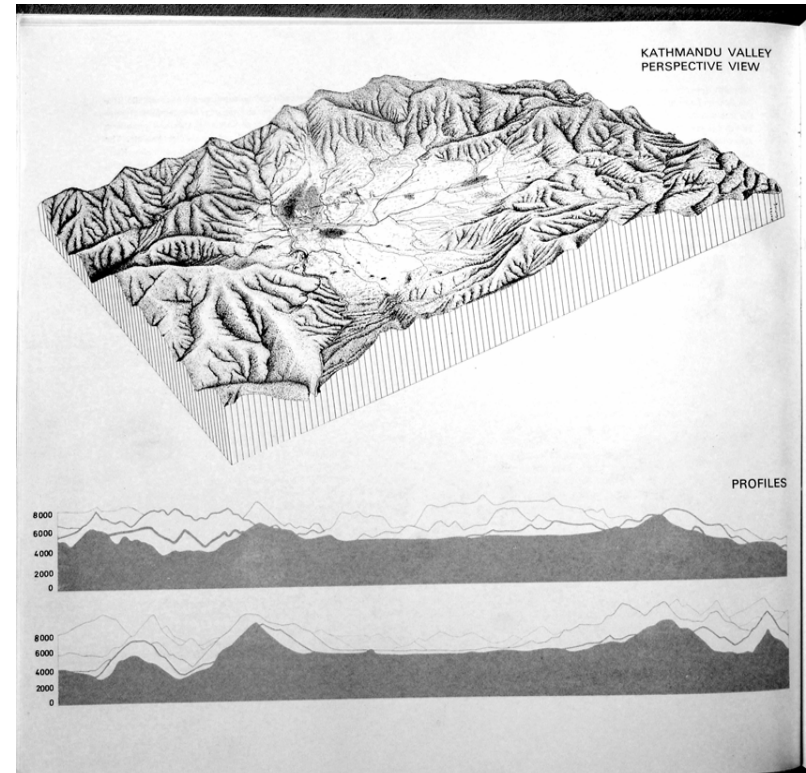
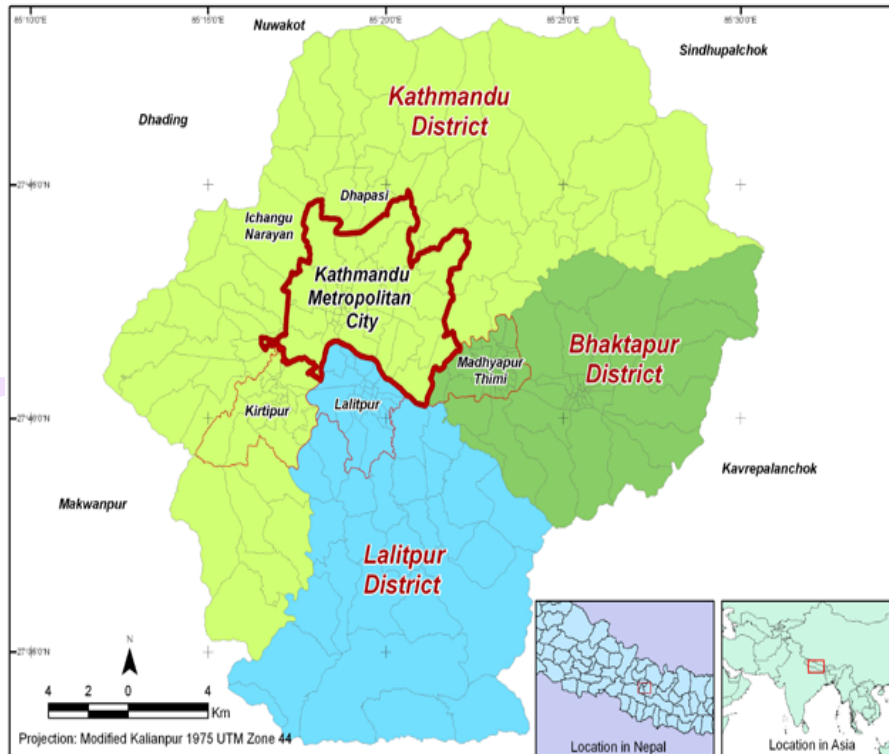
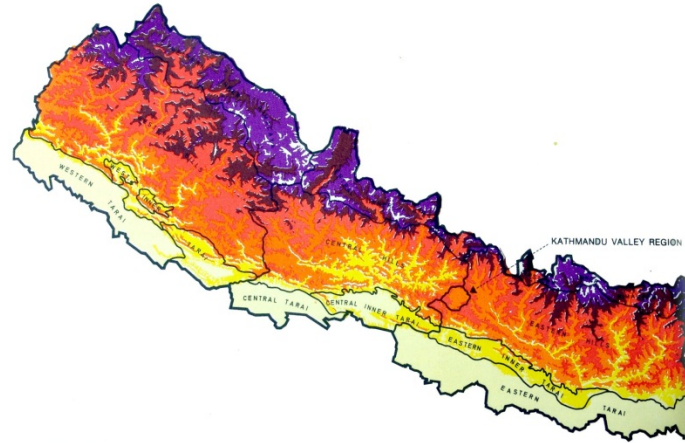


**A Project
on
Integrated Development of the
Bishnumati River Corridor and Historic
Core in Kathmandu**

Prepared by
Devendra Dongol
Department Head
Physical Development & Construction Department
Kathmandu Metropolitan City
Email : planningkmc@gmail.com

Geographic area Kathmandu Metropolitan City (KMC)



Kathmandu Valley Location Map

Source: Kathmandu Metropolitan City Government

Map and projection modified by EMI-GIS, 2010



Introduction

Kathmandu Metropolitan City

- **Kathmandu Metropolitan City(KMC) is the capital of Nepal**
- **Population- 1.066 millions(census 2011)**
- **Population Growth - 5.2%**
- **Area of KMC – 51.8 sq. km, Area of Kathmandu Valley–670 sq.km, Population - 4 millions**
- **Commercial & Political Hub**
- **Divided into political 35 wards**
- **No major industries within the city limit. Few garment industries**

The Bisnumati River Corridor and Inner City and Historic Core

The Bisnumati river corridor is one of the important corridor linking N-S of Kathmandu and adjoining municipalities. The River corridor is of 2.8 km length between Balaju in the North and Teku bridge in the south.

- The river is close to the Historic Core of Kathmandu
- Over the years unplanned and the often and illegal urban development has encroached the river. Much of this is occupied by urban poor who have limited access to adequate infrastructure and reside in the sub –standard structures
- The socio-economic scenario of the Bishnumati River Corridor and the surrounding areas is very poor
- The Historic Core in Kathmandu is very rich in cultural heritage with enormous historic buildings, temples, courtyards including a noted World Heritage Site
- Old buildings being built without following the building bye-laws and the codes. The historic core is very risky and vulnerable in terms of earthquake disaster.
- The urban re-development of the Historic Core is being initiated in which the risk sensitive component is also included.

Integrated Development of Bishnumati River Corridor and Historic in Kathmandu

Bishnumati River Corridor (2.8 km length)

- Construction of 4 lane road along river banks (completed in 2011)
- Improvement of Junctions and construction of pedestrian bridges-ongoing
- Greenery, Parks and Recreational facilities along River Banks-ongoing
- Construction of waste treatment facilities at various locations (proposed)
- Construction of parking facilities and the promotion and conservation of open spaces along the river banks - ongoing

Inner City and Historic Core (area 2.8 sq.km.)

- Pedestrianisation – stone paved roads-ongoing
- Improvement of existing drainage
- Rehabilitation of cultural heritages, temples, historic buildings and courtyards-ongoing
- Improvement of Access roads connecting Bishnumati River Corridor and construction of parking facilities-ongoing
- Urban redevelopment (considering the risk sensitive component) and the Solar Street Lighting within historic core

Objective

- Declare the Historic Core in Kathmandu – a complete vehicle restricted zone
- Develop as a pollution free zone and to promote and boost tourism economy
- Open spaces along the corridor will be developed/preserved for the disaster purpose

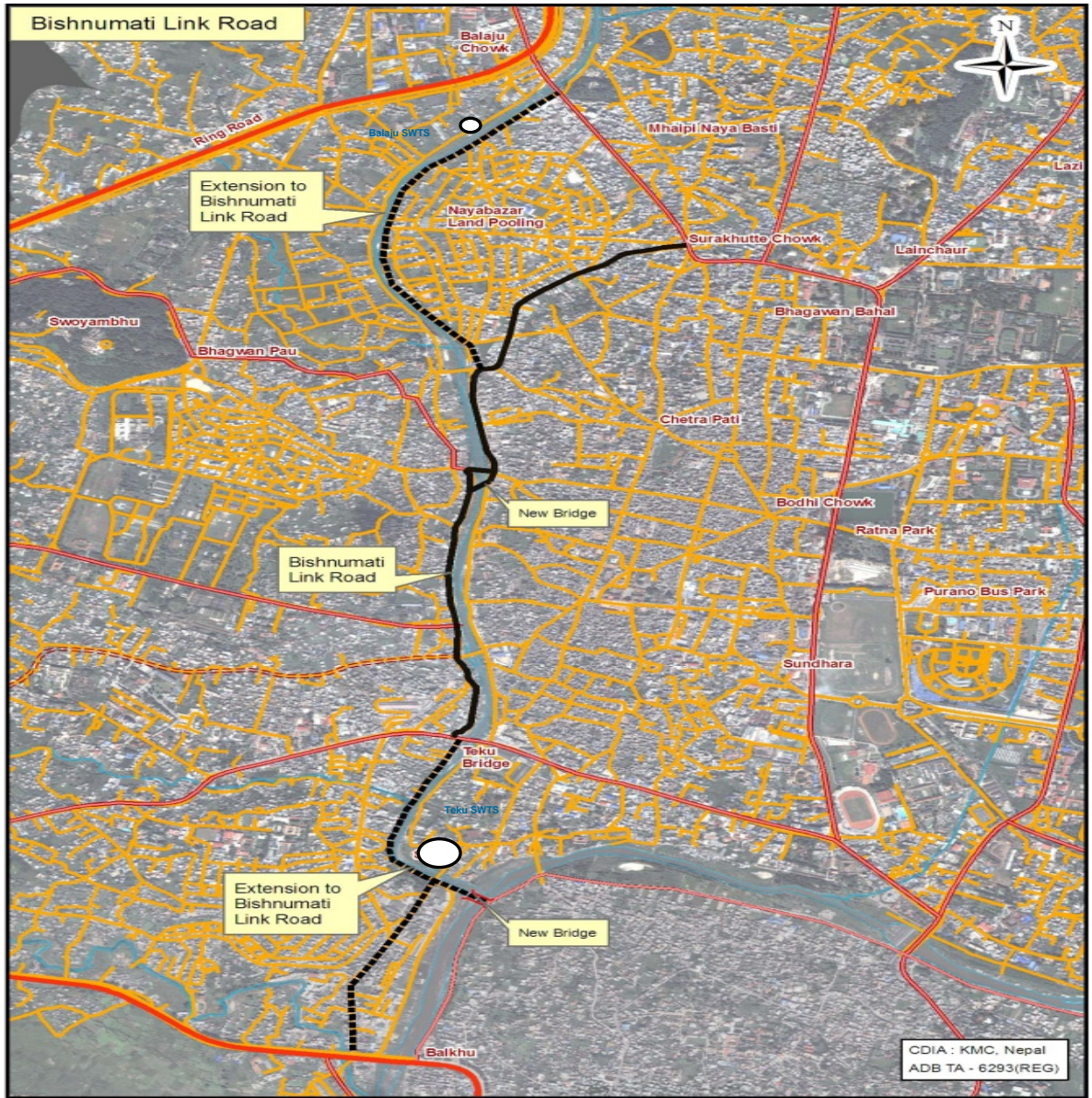


Figure: Bisnumati Corridor

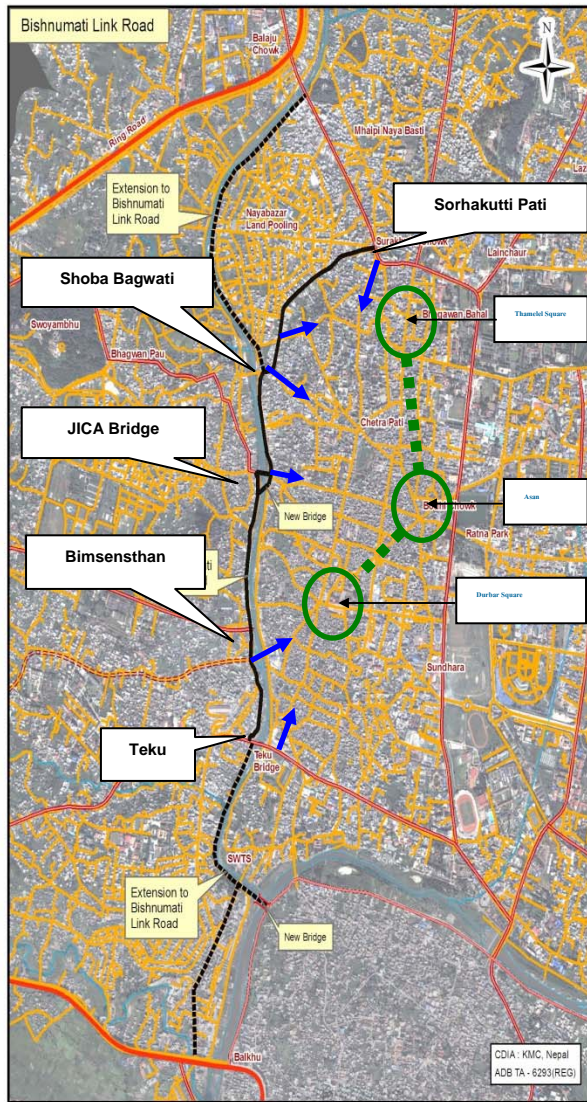
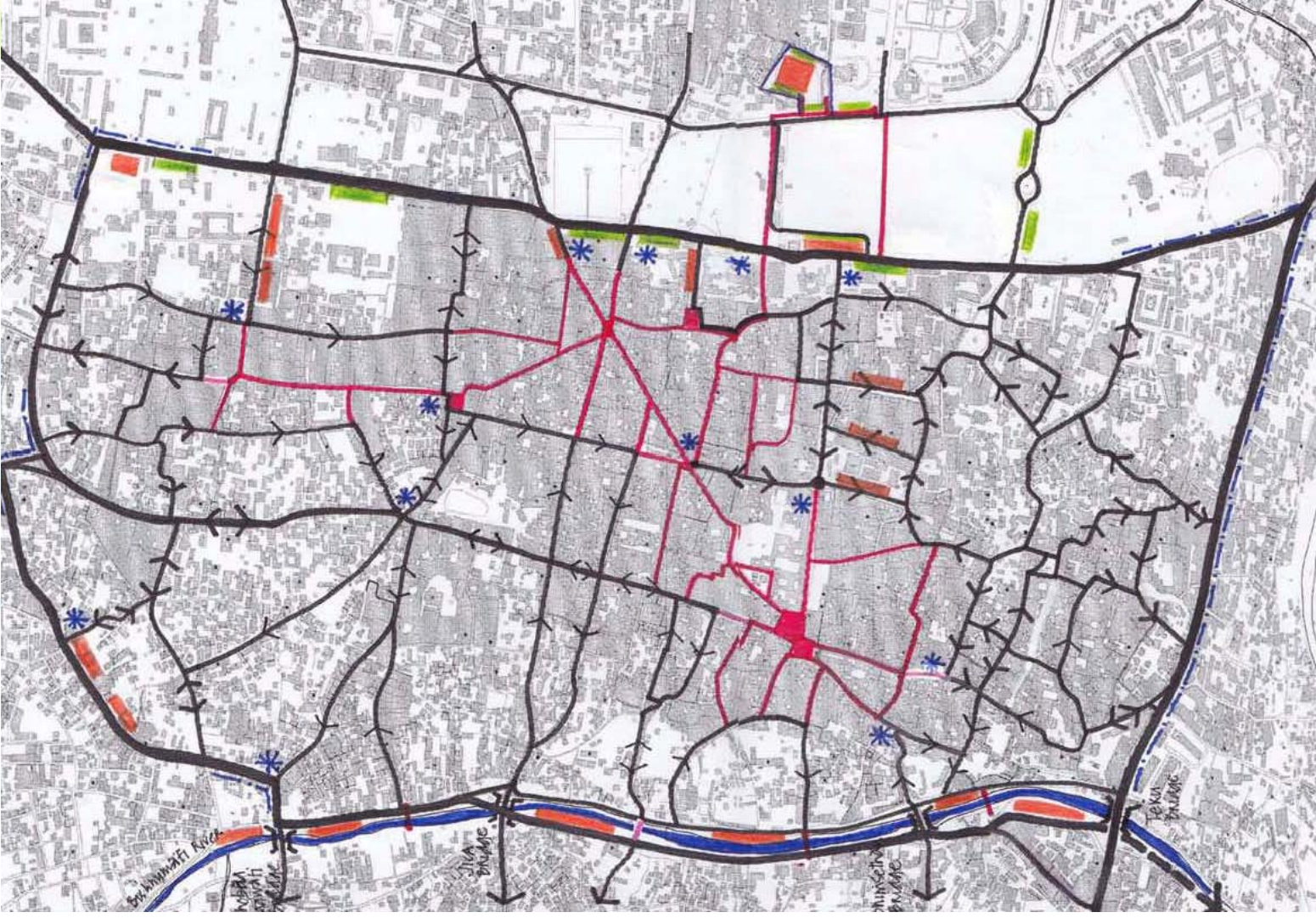


Figure : BLR Junctions and City Core Access



Figure : Environmental Improvements to the Corridor

Figure : Pedestrianisation of the Historic Core





Financing Plan (US \$)

Financing Plan (US \$)

ADB

Loan	10 millions
Grant	10 millions

Government of Nepal

Central Govt.	4.6 millions
Resettlement	2.9 millions
KMC	0.4 millions

GEF Grant 2.8 millions



Total 30.7 millions

Around US \$20 millions will be used for the implementation of the activities under Integrated Development of the Bishnumati River Corridor and city/historic core in Kathmandu. The Kathmandu Metropolitan City has allocated US\$ 6.5 millions to implement some of the activities under the project.

its



Some views on the Project

- The Integrated development of Bisnumati river corridor is a project which covers and emphasizes all the impact areas such as urban environmental improvement, traffic improvement, climate change mitigation, urban poverty reduction, socio-economic development and urban redevelopment considering the risk sensitive component.
 - The project will have a significant impact on the social development and economic revitalization of the project and surrounding areas.
 - Coordinating with various line agencies and stakeholders is one of the challenging task as the project is to be implemented in an integrated approach
 - The implementation of the project works begin from early2012 and will complete in 2015
 - The KMC is trying to obtain fund from the donor agencies and the potential investors for the implementation of the activities apart from the ADB and Kathmandu City's funding
- 
- 



Thank you.