

PAC INTERNATIONAL INC.

A Nevis Business Corporation, IBC

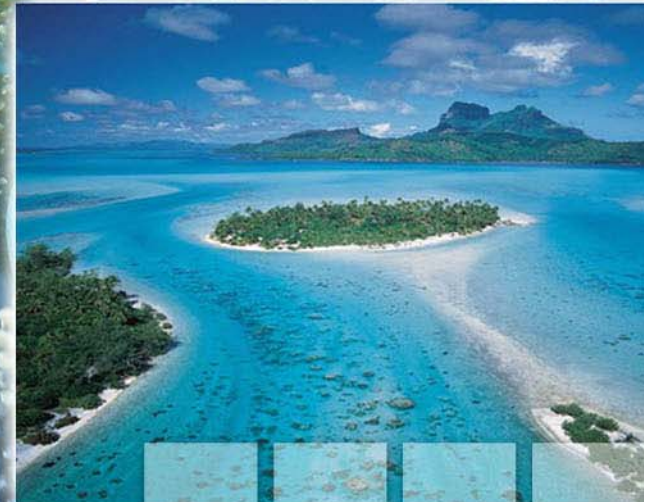
**PROVIDING TODAY'S' INTEGRATED
SUSTAINABLE BUSINESS SOLUTIONS**

Lead Partner: CEO & Founder, Erik W. Hagberg
ewh@pacinternational.org 908-216-1004

*UN SIDS Partnership: Implementation of New
Technologies for Sustainable Development*



PAC



PAC RMI INC.

A FULLY LICENSED RESIDENT DOMESTIC CORPORATION OF
THE REPUBLIC OF THE MARSHALL ISLANDS

LEADING PARTNER FOR IMPLEMENTATION OF
NEW SUSTAINABLE TECHNOLOGIES



PAC





PAC SI UNLIMITED INC. SOLOMON ISLANDS

*Supporters of the UN SIDS Partnership
for Implementation of New Sustainable Technologies*



PAC

CSD 15-Thematic Focus; Industry

The New Corporate Responsibility; Sustainable Development

“Implementing proven sustainable and financially viable technologies empowering successful adaptation to our changing earth.”

Primary Focus:

- Holothurian Aquaculture, Cooperative Ownership,
- International Management & National Enterprises
- Technology Transfer / Education Empowerment
- Capacity Building & Sustainability

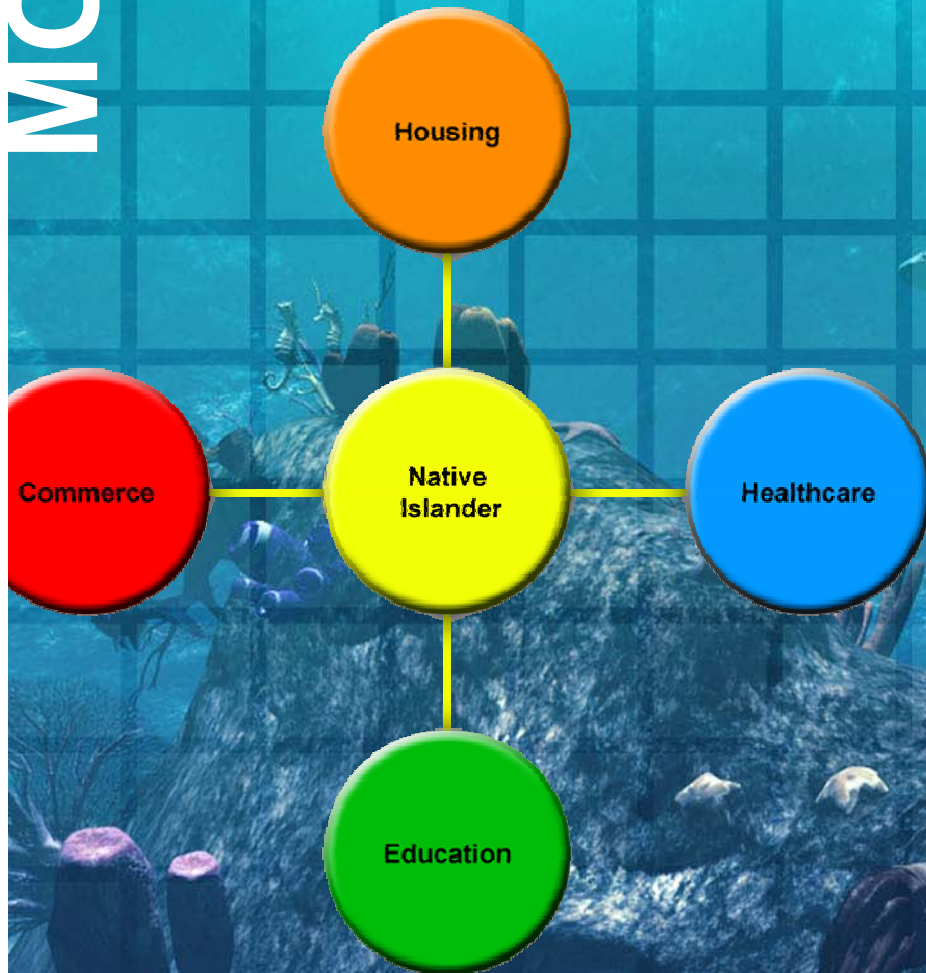
Thesis:

**The Cooperative Corporation: Integrating Local Success & Corporate Prowess
An Equitable and Ethical Solution for Successfully Implementing Sustainable Technologies in SIDS**

**Direct Collateralization of Sustainable Resources through Cooperative Partnership:
A New Method to Secure International Funding that will Produce Necessary Results.**



Capacity Building



- Immediate Results:**
- Create much needed jobs for Outer Islands Communities in Aquaculture providing cash income to meet daily needs
 - Create supplemental earnings for entire communities through sustainable harvests supplementing other cottage industry
- Long term Results**
- Increase economic and social security through PAC'S Employee Stock Ownership Program (ESOP)
 - Protect, Propagate, and farm terrestrial and marine ecosystems sustainably and profitably there by creating industry
 - Apply adaptive technologies to buffer climate change locally

Cooperative Ownership

For the first time, PAC offers communities

- 10 % Employee Stock Ownership Programs (ESOP)
- 10% for sustainable management of select natural res.
- 10% equity for local buy in by land ownership and partners; (islanders invest no cash)

•Important financial asset for Local People

- Can be used for collateral for loan
- Savings for children's education
- National and Municipal Capacity Building
- Start-up capital for new businesses

•Entire villages can reach per capita earnings participating in PAC'S employee, resource and land based cooperative investments

PAC



EMPLOYEE STOCK OWNERSHIP PROGRAM (ESOP)

In addition to Salary: Serves as a private type of Social Security and Savings

Stock options every year:	10 shares**
*Stock option 3rd year:	100 shares**
*Stock option 5 th year:	1000 shares**
*Stock option 7 th year:	7000 shares**
*Stock option 10 th year:	10,000 shares**

*(contingent on meeting performance requirements)

**Additional Bonuses and promotions available for work ethic, discoveries & integrity



Community ESOP

Cooperative Farmers Earn \$5 USD / Bucket When sustainable quantities are available using a Quota System

Stock options per year: 1 shares**

*Stock option 3rd year: 10 shares**

*Stock option 5th year: 100 shares**

*Stock option 7th year: 700 shares**

*Stock option 10th year: 1,000 shares**

*(contingent on meeting performance requirements)

** (Additional Shares possible as bonuses)



PARTNERSHIPS

PAC

- **Municipal Governments**

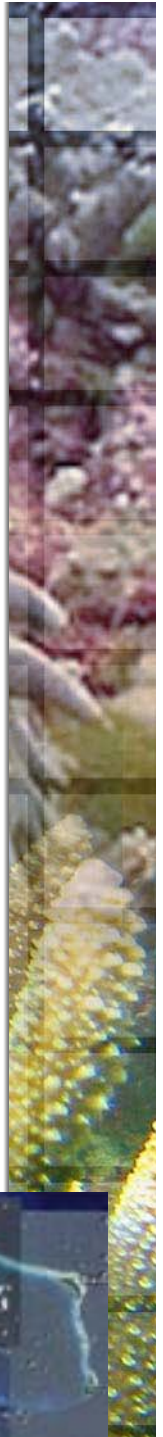
- Six Municipal Governments in the Marshall Islands have signed exclusive contracts with PAC RMI to manage and enhance sustainable sea cucumber farming throughout each atoll.
- All are Ready to Expand Contracts for additional technologies.
- Letters of Support from land owners in five of nine Solomon Island Provinces.

- **Land owners, Traditional Chiefs, Tribal Groups, and Community Cooperatives**

- The Iroij, the Chief, of Arno Atoll has agreed to lease his island of Kojbwe to PAC RMI for corporate and UN SIDS Partnership Technologies in exchange for Stock Equity in PAC RMI.
- PAC SI is negotiating a Co-Ownership agreement with the owner of an archipelago in the Solomon Islands for Stock Equity.

- **National Government**

- Synergizes on all levels; realize National Framework object
- Objective is Sovereign Guarantee and Equity Partnership



Resources and Land

PAC National Enterprises Consists of 100,000,000 shares

10% Equity of PAC is reserved for cooperative sharing in exchange for the pledge of necessary natural resource contracts in Aquaculture and Agroforestry

10% equity and can be earned through land leasing or sale of necessary properties.

Exclusive Farming Lease:	~100,000-1,000,000 Shares per Province
Lease of Islands or Islets or other property: (50 year minimum)	25,000-500,000 Shares
Lease of Coral Pinnacle or Reef Flat: Research Stations / Farm sites)	10,000-50,000 Shares
Sale of Island, or Property:	100,000-1,000,000 shares



PAC



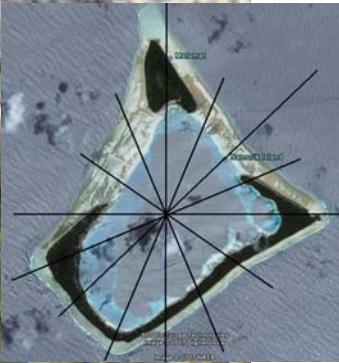
Technology Transfer

- **Train communities in PAC'S farming technologies.**
 - Cost effectively increasing sea cucumber stocks producing regular sustainable harvests within one to three years
 - Incorporation of local knowledge has had big results
 - PAC Encourages use of local canoes for farming
- **Use Responsible Aquaculture Technologies such as Remote Settling and sea ranching**
 - Intensive Hatcheries and confined farms which have and continue to introduced diseases and pollute the environment
- **New Methods of Processing, Product Engineering, and Marketing that value to local products.**
- **Introducing New Sustainable Technologies through the UN SIDS Partnership.**



A PLAN FOR SUSTAINABLE ECOSYSTEM MANAGEMENT

- **Entire atolls, islands, and archipelagos, will become sustainable reserves for breeding and management of productive multi-species aquaculture & agroforestry .**
 - *No nets, cages, pens, or obstructions to navigation*
 - *Using human resources to enhance natural resources*
- **PAC uses Satellite Images to designate a specific harvest area for each month of the year**
 - *This micromanagement ensures proper maintenance of sea cucumber stocks throughout an atoll, around an island, or around an archipelago.*
 - *If a zone were to be over fished, it would be immediately obvious; some of the catch can be returned to the farm and cultivated*
- **This makes it easy for worker to understand their assignments and timely harvesting by the community**
 - *Rotating Work Schedule shares more earnings*
 - *Whole communities can harvest and earn*



Empowerment

- **PAC'S employees will receive training and continuing education to enhance their job performance from entry to executive levels**
 - We expect to have Local Executives managing each national division of PAC within five years of launch
- **Cooperative Farmers and entire communities will be provided training seminars to understand and successfully interact with new sustainable technologies**
 - A requirement if the technology is to be welcomed, used, and maintained
 - **Coupled with stock holder model really motivates people**
- **PAC'S financial model and employee stock ownership program will empowers personal economic capability**
 - Stock certificates can be translated into bank accounts
 - Stock certificates can be used as collateral with banks



MARKET

Why Sea cucumber?

- **Food Security**
 - Very High in Protein
- **Valuable Asian Delicacy for three millennia**
 - Anti-Arthritic and Aphrodisiac
- **Anti-viral & Anti-Bacterial**
 - Component in patented HIV/AIDS treatment
- **Showing success in fighting Cancer**
 - Indications of slowing spread of cancer
 - e.g. Breast Cancer
- **A Supplement promoting health and virility.**



PAC

Financial Viability

- **Annual Trade in Holothurians exceeds \$250M and is driving many species into local extinction.**
- **PAC'S farming and management system is more productive and sustainable**
- **Satisfy existing demand sustainably and build the market**
- **Supply Pharmaceutical Industries with a reliable supply of sea cucumbers**
- **Enhances Global Food Security**



MARKET SHARE

Industry	Market Size (Annual Sales)	Target .1%	\$USD
Food Industry	\$981.5B (U.S.)	0.1	\$981.5M
Organic & Health Food Industry	\$182B (global)	0.1	\$182M
Pharmaceutical Industry	\$570B (global)	0.1	\$570M
Condiment Industry	\$3.2B (U.S.)	0.1	\$3.2M
Total Target Market Share			\$1.736B

Source: Plunkett's Food Industry Almanac 2005 and S&P Industry Reports

Pac's Products, Customers, & Their Origin

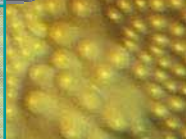
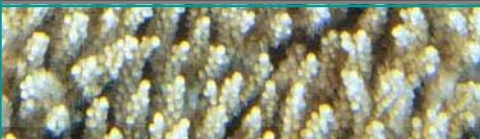
Product Category	Physical Product	Category of Buyer	Origin of Buyers
Dried Sea Cucumber	<i>All varieties, Highest grade only</i>	Food buyers & Int'l Distributors	Hong Kong, Singapore, Taiwan
	<i>Granulated & dried Individual spec. & mixes</i>	Organic /whole food	USA, EU, Asia
	<i>Spiced Dried Sea Cucumber Mixes</i>	Specialty Foods, Gourmet, Trade Shows	Tokyo, Singapore, Kuala Lumpur, Paris, Taiwan
	<i>Specially sliced and dried</i>	Gourmet Organic /whole food	USA, EU, Japan
	<i>High Nutrition, boil & serve one dish complete meals</i>	Food relief organizations	Africa & Globally to Red Cross, UN, UNICEF
	<i>Dried sea cucumber viscera</i>	Food seasoning, condiments	Japan, China, Vietnam, Malaysia, Taiwan

PAC

Pac's Products, Customers, & Their Origin

Pharmaceutic al Sea Cucumber	<i>Live, whole fresh frozen</i>	Research scientists, universities, laboratories	USA, EU, Scandinavia, India, Japan, China
	<i>Pre-masticated & Preserved (raw)</i>	Pharmaceutical Manufacturers, Researchers, Universities	USA, EU, Scandinavia, India, Japan, China
	<i>Extracted Chondriton-Sulphate</i>	Pharmaceutical Manufacturers, Supplement Manufacturers, Arthritis Medication producers	USA, EU, Scandinavia, India, Japan, China
	<i>Glucosides, sulphated- polysaccharides</i>	Pharm. Man., Suppl. Man., HIV, Cancer treat.	USA, EU, Scandinavia, India, Japan, China
	<i>Fucans & Lectins</i>	Pharm Man., Supplement Man., HIV, & Cancer treatments	USA, EU, Scandinavia, India, Japan, China
Live Sea Cucumber	<i>Aquarium Specimens</i>	Commercial Aquariums, Live Public Displays, Amateur Aquarists.	Worldwide Aquariums & Scientific Institutions, stores, restaurants and offices

PAC



Pac's Products, Customers, & Their Origin

Processed Sea Cucumber	<i>Sushi grade frozen and vacuum sealed</i>	Specialty food purveyors, Sushi Bars, caterers	USA, Japan, China, Philippines, Vietnam, Korea
	<i>Granulated, sliced & pickled body wall</i>	Spec. Food Purveyors, Sushi Bars, Island locals, Bar snacks	USA, Japan, Europe, South America
	<i>Sea Cucumber & Miso Preserves mild & spicy</i>	Gourmet Markets, Restaurants, End Consumers, Dieters	USA, Japan, Europe, South America
	<i>Meals Ready to Eat (MRE's)</i>	International Militaries, NATO Pre-packaged meal industry	American, British, Swedish, Chinese
	<i>Frozen Sea Cucumber (whole & pieces)</i>	International Food Purveyors	Japan, US, Europe, China, Vietnam, Malaysia
	<i>Sea Cucumber Patties, Sea Legs, Seafood loafs</i>	Mass-market & Grocery food Chains, fast food chains	US, Japan, Europe, China, Vietnam, Malaysia
Sea Cucumber Condiments	<i>Special mixes of sea cuc., seaweed, & spices, ready to eat, dried, vacuum packed individual servings</i>	Food Manufacturer, Ramen Noodle Companies, Instant rice companies, other ready to eat foods, Asian Condiment Cos	USA, Japan, China, Phillipines, Vietnam, Korea

PAC provides an insertion point for new sustainable technologies in SIDS

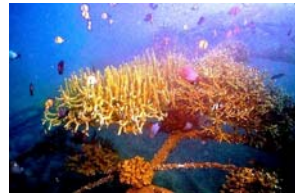
****United Nations SIDS Partnership for New Sustainable Technologies provides access to proven appropriate technologies***

****Existing Contracts streamline access to remote communities who want to implement sustainable technologies***

Partnerships in Action: PAC RMI & The Global Coral Reef Alliance, RMI

-Shore Protection: Shore Line Dock, Majuro

-Coral Reef Restoration & Shore Protection, Majuro Lagoon



Partnerships Under Development:

To be implemented in the RMI & Solomon Islands by CSD 16

Additional Aquaculture and Agroforestry, Tidal Energy, Carbon Sequestration and Soil Enhancement, Waste Management, Access to Microfinance

PAC