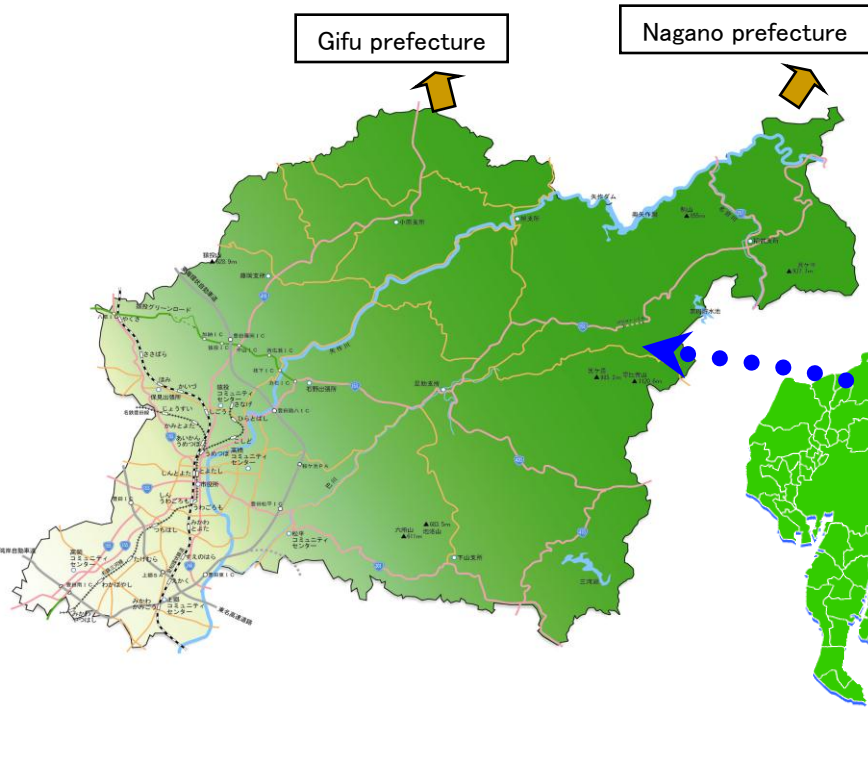

Conservation of the Natural Environment in a Modern Suburban Area

-Human resources development by wise use of Ramsar sites-

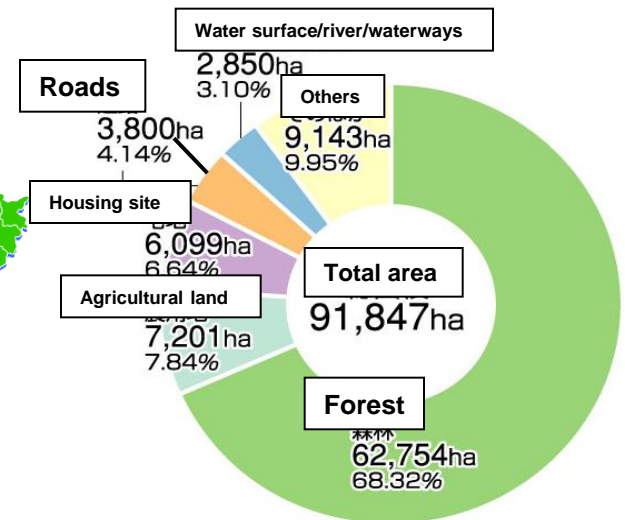


■ Deputy Mayor of Toyota City Matomi Komura

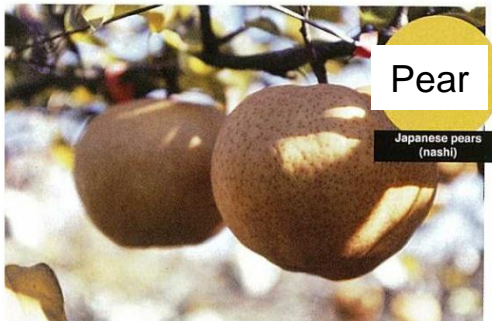
Overview of Toyota City



- ◆ Population: 422,340 (as of Aug 1, 2014)
- ◆ Area: 918.47km² (18% of Aichi prefecture)
- ◆ Industrialized urban areas and hilly & mountainous sparsely populated areas coexist.

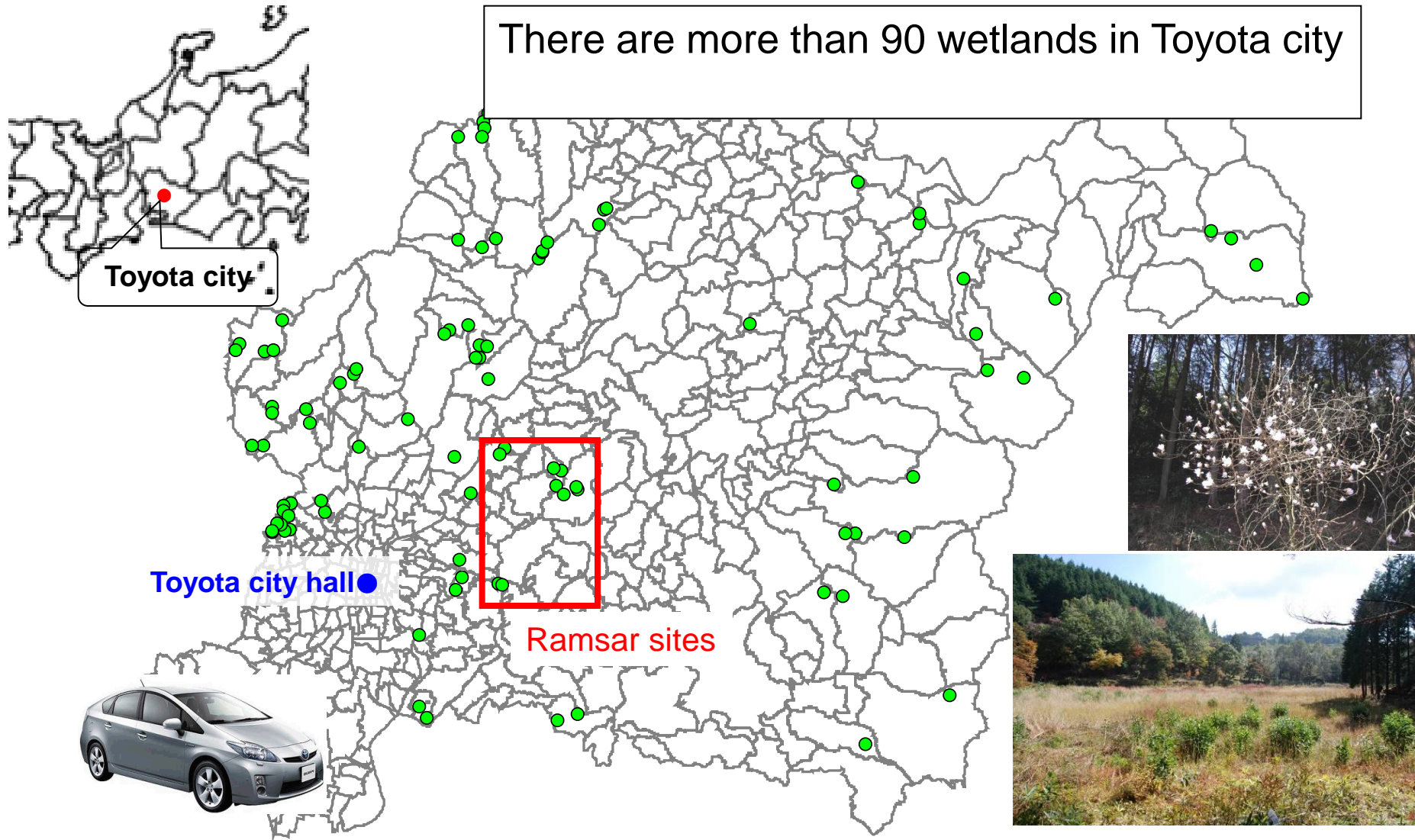


Specialties of Toyota City



Wetlands in Toyota City

There are more than 90 wetlands in Toyota city



Reference: Examination result in 2006 fiscal year

The Ramsar sites in Toyota City

Yanami Mire



Kamitaka Mire



Onshinji Mire

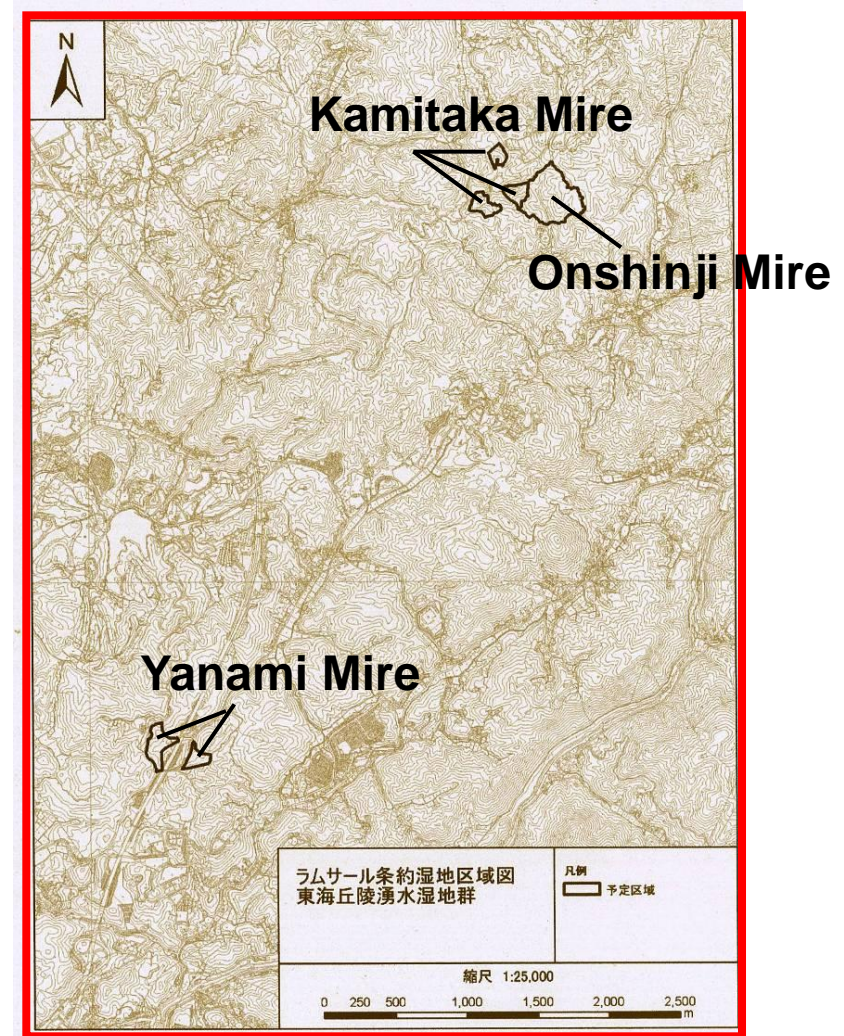


Overview of the Ramsar sites 22.5ha

- Yanami Mire 5.13ha
- Kamitaka Mire 5.45ha
- Onshinji Mire 11.92ha

(characteristics)

- The mires are formed in flat valleys and slopes. And the area is small.
- Water springs up all the time (the water settles on the clay surface).
- The 'Tokai Hill Land Elements' are mire plants in the hillside areas and surrounding barren lands mainly in the Tokai region.



Plants on the Ramsar sites

- The plants are distributed in the hillside areas and surrounding barren lands mainly in the Tokai region.
- The plants grow on these lands in a sunny environment.
- The plants are survivors or have uniquely evolved since the age when Japan had been part of the Eurasian continent in the glacial period.
- The number of the 'Tokai Hill Land Elements' are 15 and most of them are endangered species.



Eriocaulon nudicuspe
(Red list rank II)



Pedicularis resupinata var. *microphylla*
(Red list rank IB)



Magnolia tomentosa
(Red list rank II)

Importance of conservation activity

◆ Prevent eutrophication

mowing the dead grass and removing it from mires every winter

◆ Prevent droughts

by preserving surrounding forests, thinning of trees, monitoring of water levels and the flow rate of spring water

◆ Remove non-native plants



Conservation and wise use of wetlands

◆ Conservation activity with local residents

The Local Preservation Society mows the grass two times a year



◆ Promotion of environmental education by wise use of Ramsar sites

Local elementary school students learn environmental preservation at Ramsar sites



Conservation activity with local residents

- Yanami Mire: [Yanami Mire Preservation Society](#)
- Kamitaka Mire: [Kamitaka Mire Preservation Society](#)
- Onshinji Mire: [Yamanaka resident's association](#)



Promotion of environmental education by wise use of Ramsar sites (1)

Local elementary school students

◆have nature observation meetings



◆participate in conservation activity



Promotion of environmental education by wise use of Ramsar sites (2)

◆ Open to the public in autumn

Since 1998

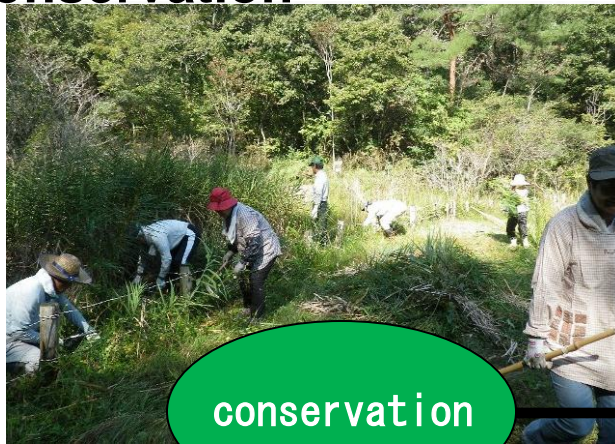


Fixed point guide by local elementary school students

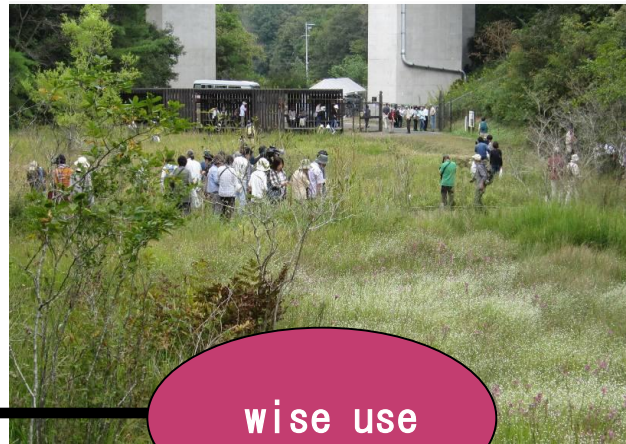


Conclusion

- Conservation of wetlands by many people's actions
- Continuation of conservation with local residents and wise use
- Promotion of human resources development for biodiversity conservation



conservation



wise use



education

