

**OBJETIVOS  
DE DESARROLLO  
SOSTENIBLE**

**THE 2030 AGENDA FOR SUSTAINABLE DEVELOPMENT IN  
CHILE:  
VOLUNTARY NATIONAL REVIEW**

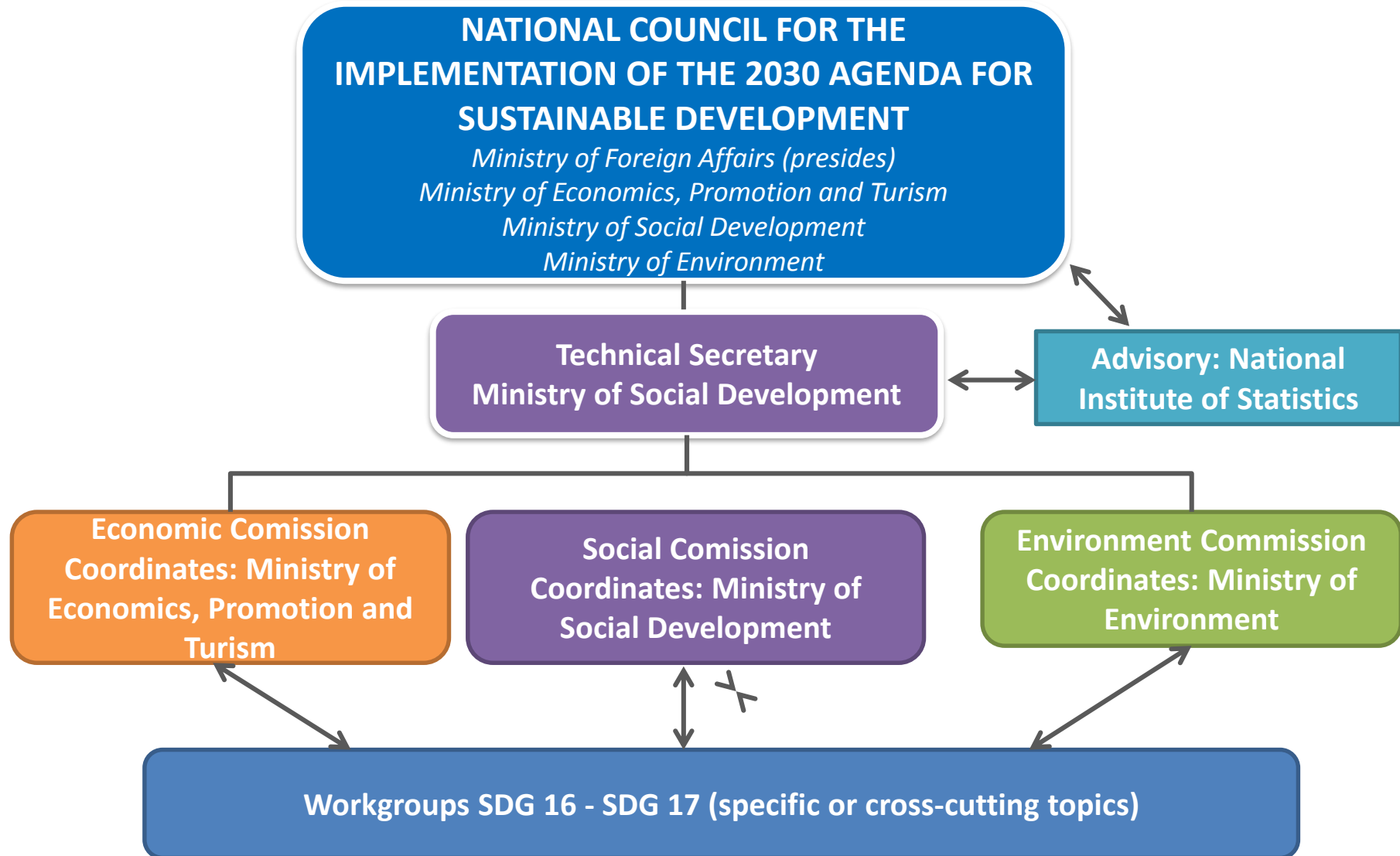


**Gobierno  
de Chile**

**National Council for the implementation of the  
2030 Agenda for Sustainable Development**

New York July 17<sup>th</sup>, 2017

# I. National Institutionality: Committees and Workgroups



# I. National Institutionalality: Committees and Workgroups

## Stakeholders invited:



### Public sector

- **SDG Government Network:** 23 ministries.
- **Other branches:** National Congress: Senate, Chamber of Deputies; Judiciary branch: Supreme Court.
- **Autonomous organisms:** Public Prosecutor Office, Comptroller General of the Republic, Human Rights National Institute.



### Civil Society

- Foundations, Corporations, NGOs.
- Community organizations.
- Labor unions.
- Others.



### Academy



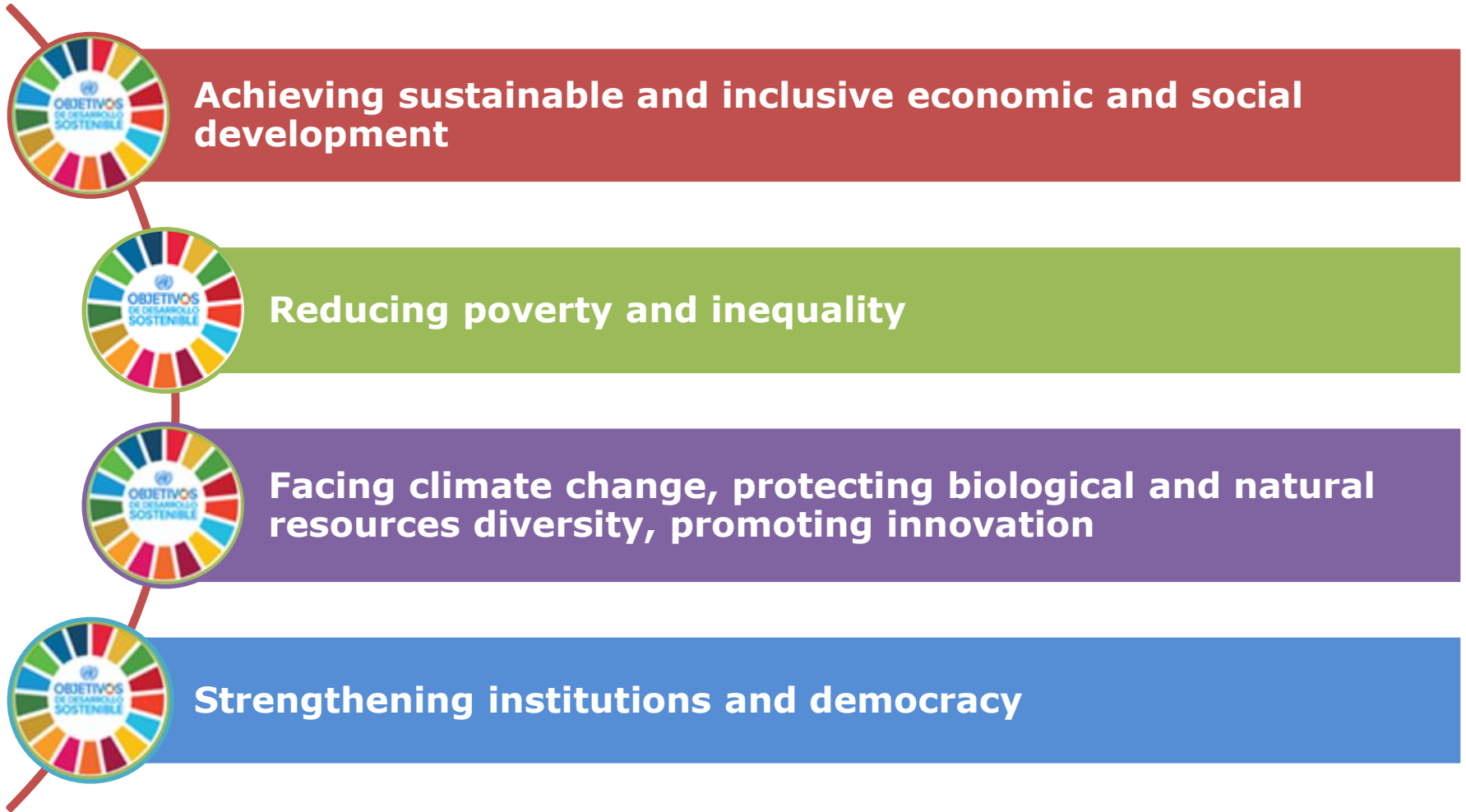
### Private sector



### United Nations System

## II. Challenges for Chile

The process of national involvement assumes that the 17 Sustainable Development Goals are integral, indivisible and cannot be hierarchized, implies four main challenges for Chile:



## II. Challenges for Chile

The implementation of the 2030 Agenda for sustainable development represents a remarkable opportunity for:

- **Achieving sustainable and inclusive economic and social development**



- **Reducing poverty and inequality**



- **Facing climate change, protecting biological and natural resources diversity, promoting innovation**

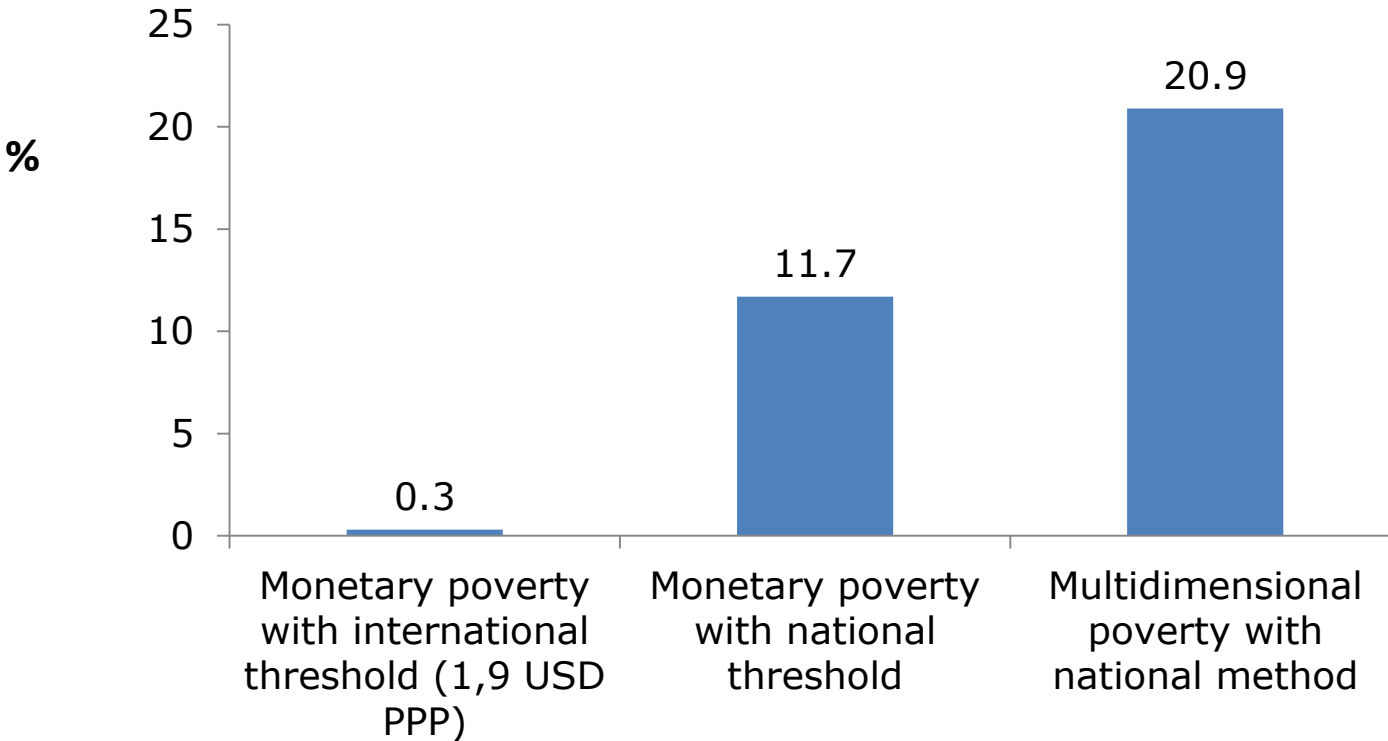


- **Strengthening institutions and democracy**



### III. Some figures

## Percentage of people living under monetary and multidimensional poverty (2015)



#### Dimensions:

- Health
- Education
- Work and Social Security
- Housing and Environment
- Networks and Social Cohesion

# III. Some figures

**1.000.000 km<sup>2</sup>** protected marine areas (ZEE) (2017).



People under poverty: **0,3%**, international method; **11,7%**, national monetary method; **20,9%**, national multidimensional method (2015).

**10,3%** of children under 5 years old is malnourished by excess\* (2015).

Maternal mortality rate: **13,5** deaths per 100.000 live births (2014).

Female participation in Chamber of Deputies **15,8%**; Senate **18,4%**; Town halls **11,9%** (2016).

Unemployment rate: **6,5%** (2016).