



International Futures (IFs): Advancing the 2030 Agenda

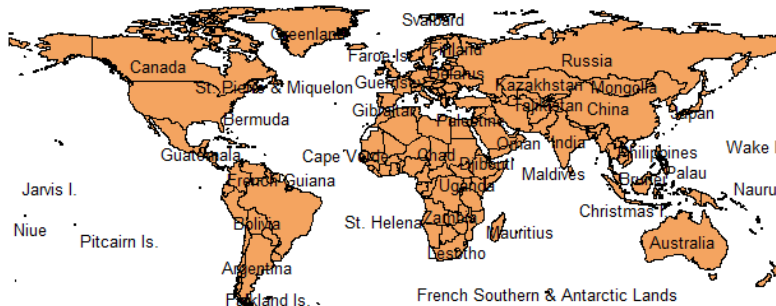
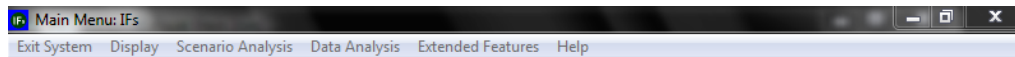
Professor Barry B. Hughes
Senior Scientist and Mentor/Founding Director
Frederick S. Pardee Center for International Futures
Josef Korbel School of International Studies
University of Denver

UN-DESA Expert Group Meeting
January 25-26, 2018



FROM THE PARDEE CENTER AT DU, A TOOL:

THE INTERNATIONAL FUTURES (IFs) SYSTEM



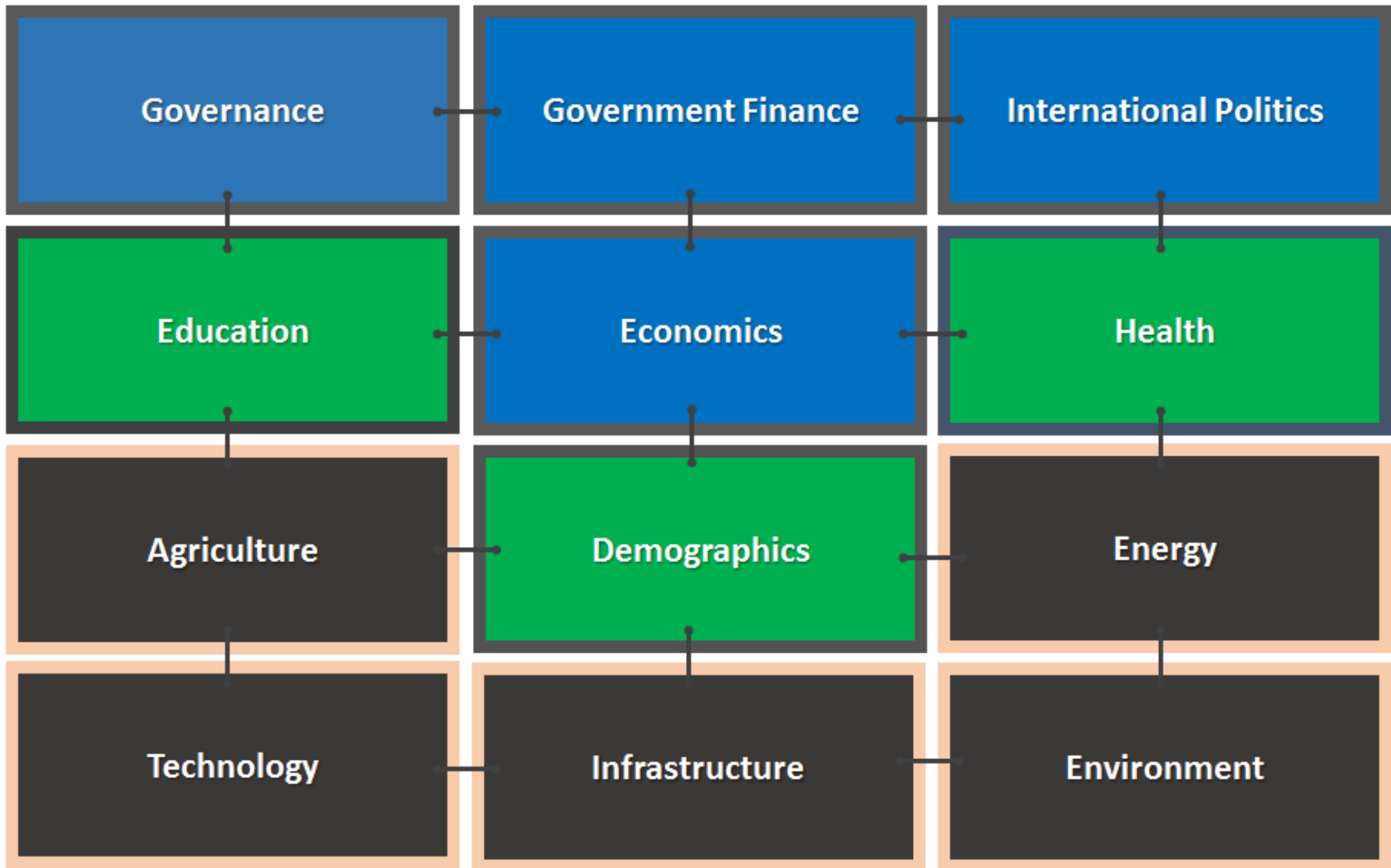
If you wish primarily to explore possible futures of a particular country, click on that country (right-click for features that help you control the map, including zooming).

To access the full functionality of IFs, including creating multi-country displays in specific issue areas, building new scenarios, and analyzing historical data, use the menu options.

Basic Features

- 186 countries
- Heavily integrated model system
- Dynamic, recursive, 1-year steps (myopic) to 2100
- User interface for data and scenario analysis
- Transparent/open, no cost at Pardee.du.edu (download and web versions)

MODELS OF THE INTERNATIONAL FUTURES (IFs) SYSTEM



IFs APPLICATION TO SDG ANALYSIS

1. Attention to wide range of interconnected SDGs
 - Development of SDG Goal/Indicator form and graphic
 - Pilot studies/collaboration with UNDP/Strategic Policy (e.g. Moldova)
2. Analysis related to sustainable and resilient societies
 - Intervention/scenario analysis
 - Exploring synergies and trade-offs

SDG Goal and Indicator Analysis Form:

A snippet from 17 goals, 169 targets, 232 indicators;
94 variables in IFs aligned + many history only

IFs SDG Overview Table

Continue Use Groups Use History Only Indicators Save Table

Countries or Regions

Select Year

Click on description to go to graph, or click on scenario values to show over time. Red is used for values that are in the opposite direction of the goal.

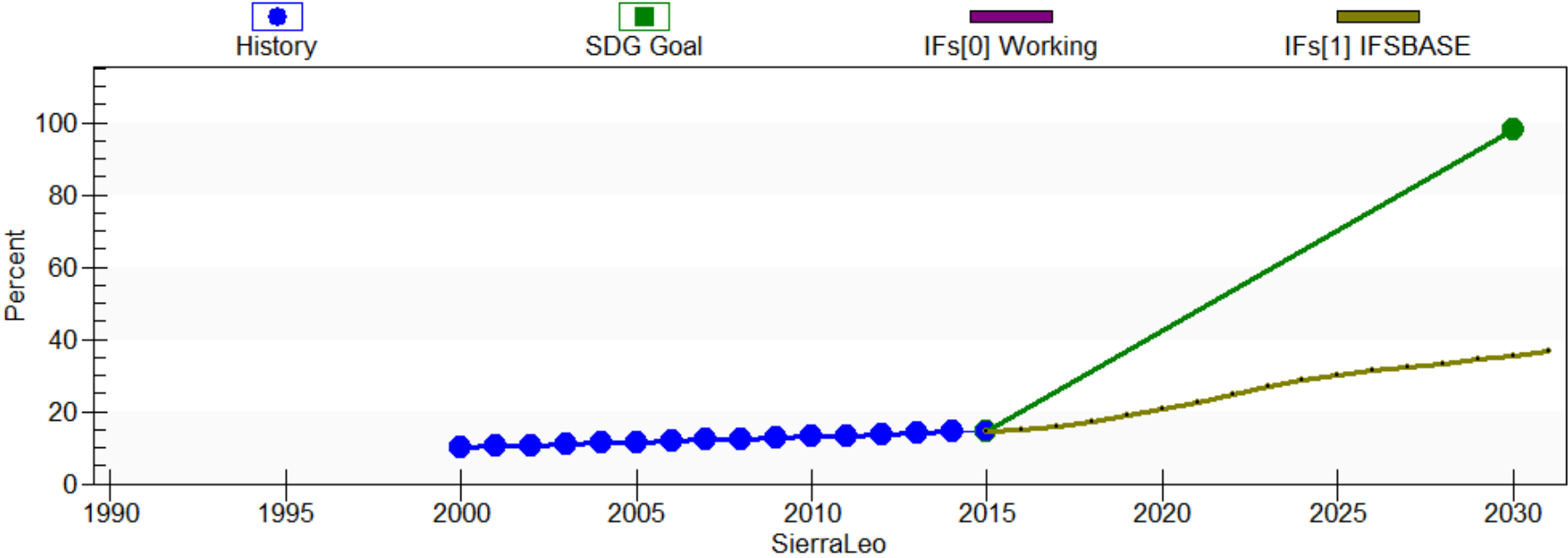
Select Reference Scenario:

Select Intervention Scenario:

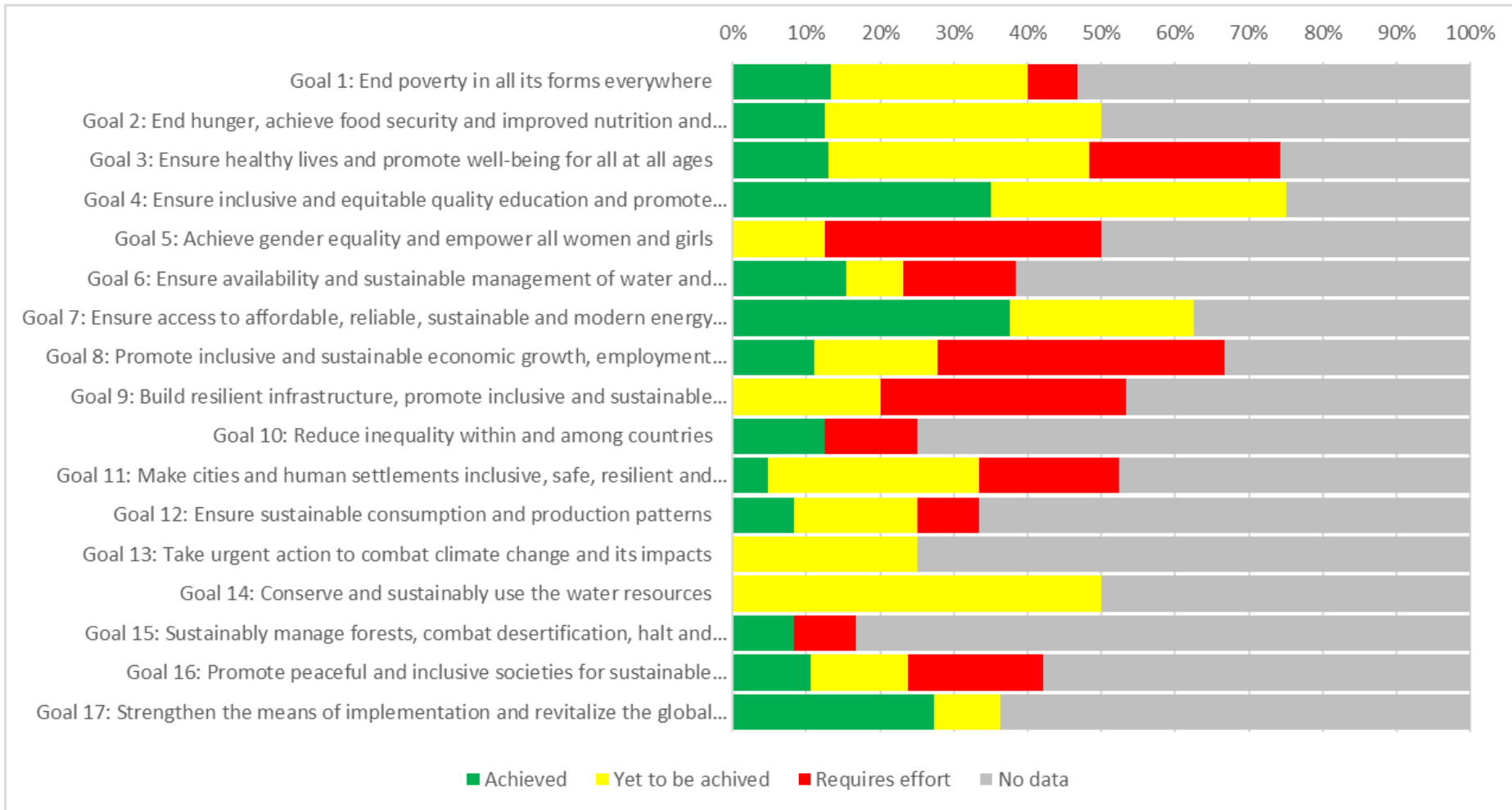
Indicators	2015	Reference Scenario 2030	Intervention Scenario 2030	Target Value
***** Goal 6: WATER AND SANITATION *****				
Indicator 6.1.1 - Percentage of people with access to safe water	67.17	78.6	78.6	98
Indicator 6.2.1 - Percentage of people with access to sanitation services - Improved	14.54	35.41	35.41	98
Indicator 6.3.1a - Percentage of people connected to wastewater collection system	4.557	7.926	7.926	98
Indicator 6.3.1b - Percentage of people connected to wastewater treatment system	4.557	7.926	7.926	98
Indicator 6.4.2 - Level of water stress: freshwater withdrawal as a percentage of available freshwater resources	0.3044	0.5394	0.5394	0.1522
***** Goal 7: ENERGY *****				
Indicator 7.1.1 - Percentage of population with access to electricity - Total	17.33	35.69	35.69	98
Indicator 7.2.1 - Renewable energy as percentage of total final energy consumption	9.417	4.586	4.586	
Indicator 7.3.1 - Energy intensity measured in terms of primary energy and GDP	0.0017	0.002	0.002	

SDG Goal and Indicator Analysis Graphic:

Drill Down Further on Percentage with Access to Improved Sanitation (Indicator 6.2.1 for Sierra Leone)



MAPS Report and Moldova SDG Dashboard: Can now contribute (e.g. Brazil, Turkmenistan)



- Green—target value already achieved
- Yellow—target value yet to be achieved, but could be achieved
- Red—indicator value is so far from target value and would need significant effort to be achieved
- Gray—data are not available or it is impossible to set target

SDG INTERCONNECTIONS 1:

MODEL CONNECTIONS (E.G. INFRASTRUCTURE)

1. Infrastructure Access (toward Demand/Need)
 - Transport (roads/rural access), water and sanitation (ladders), electricity, ICT (landlines, mobile, fixed and mobile broadband)
 - Driven by demographics, income/poverty - policy
2. Infrastructure Supply
 - Construction, maintenance
 - Driven by investment – policy
3. Infrastructure Equilibration with other system connections
 - Budget (mostly government, some private) constraint; hence spending on education, health, R&D, etc; spending vs consumption
4. Forward Impacts
 - Nutrition, health, economic productivity, much else (but not species)

SDG INTERCONNECTIONS 2:

SCENARIO ANALYSIS

1. Resilient Moldova

- Expand infrastructure, especially WASH and ICT
- Also attention to health (resilience)

2. Improved Governance

- Corruption reduction
- Social and economic inclusivity

3. Integrated Push

- Attention to interactions (trade-offs/synergies)

Let's go to the model

Pardee.du.edu

