



HIGH-LEVEL POLITICAL FORUM ON SUSTAINABLE DEVELOPMENT

Session 5 Global Environmental Commons:

Co-designing solutions to integrate SDGs into policies and practices thru education and capacity development

Directives and Policies about INDONESIA'S WATER RESOURCES MANAGEMENT PLAN APPROACHES TO SDG'S



July 9th, 2020

Edy Juharsyah

Director of System and Strategy of Water Resources Management,
Directorate General of Water Resources
Ministry of Public Works and Housing, Indonesia



MINISTRY OF PUBLIC WORKS AND HOUSING

General Condition

Population :

257.91 Million peoples (2016)

305.65 Million peoples (2035 Projected)

Population Growth of 1.03-1.07 % (2010 – 2035)

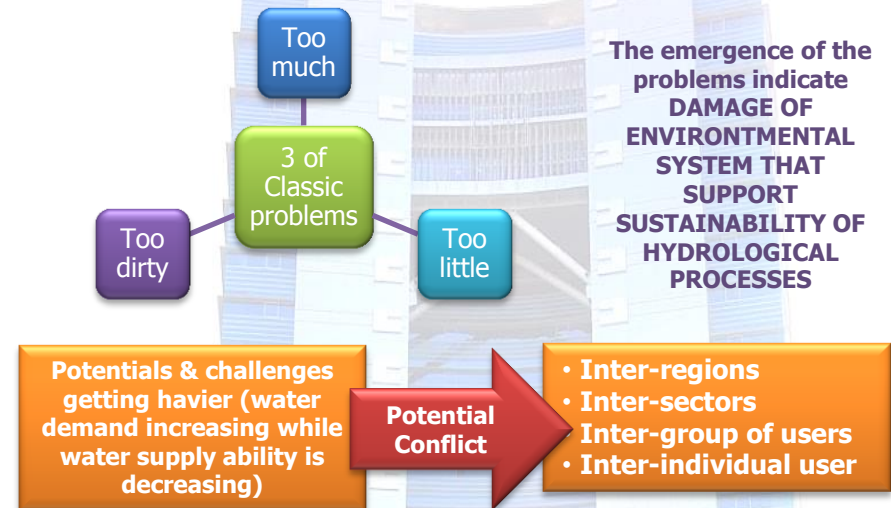
Land Area 1.913 million km² (2015)

Island 17,504 islands (2015)

Potential of Surface Water : 3.9 billion m³

Sources :Central Bureau of Statistics & DGWR-MOPWH

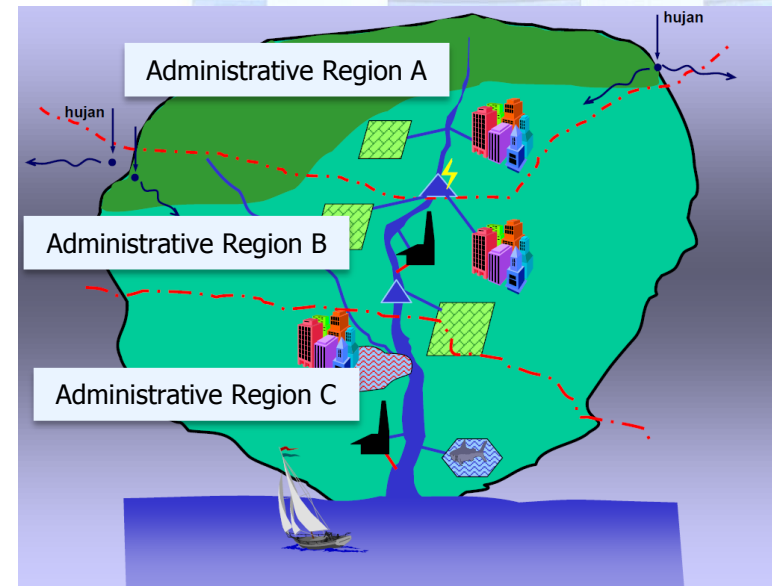
PROBLEMS OF WATER RESOURCES



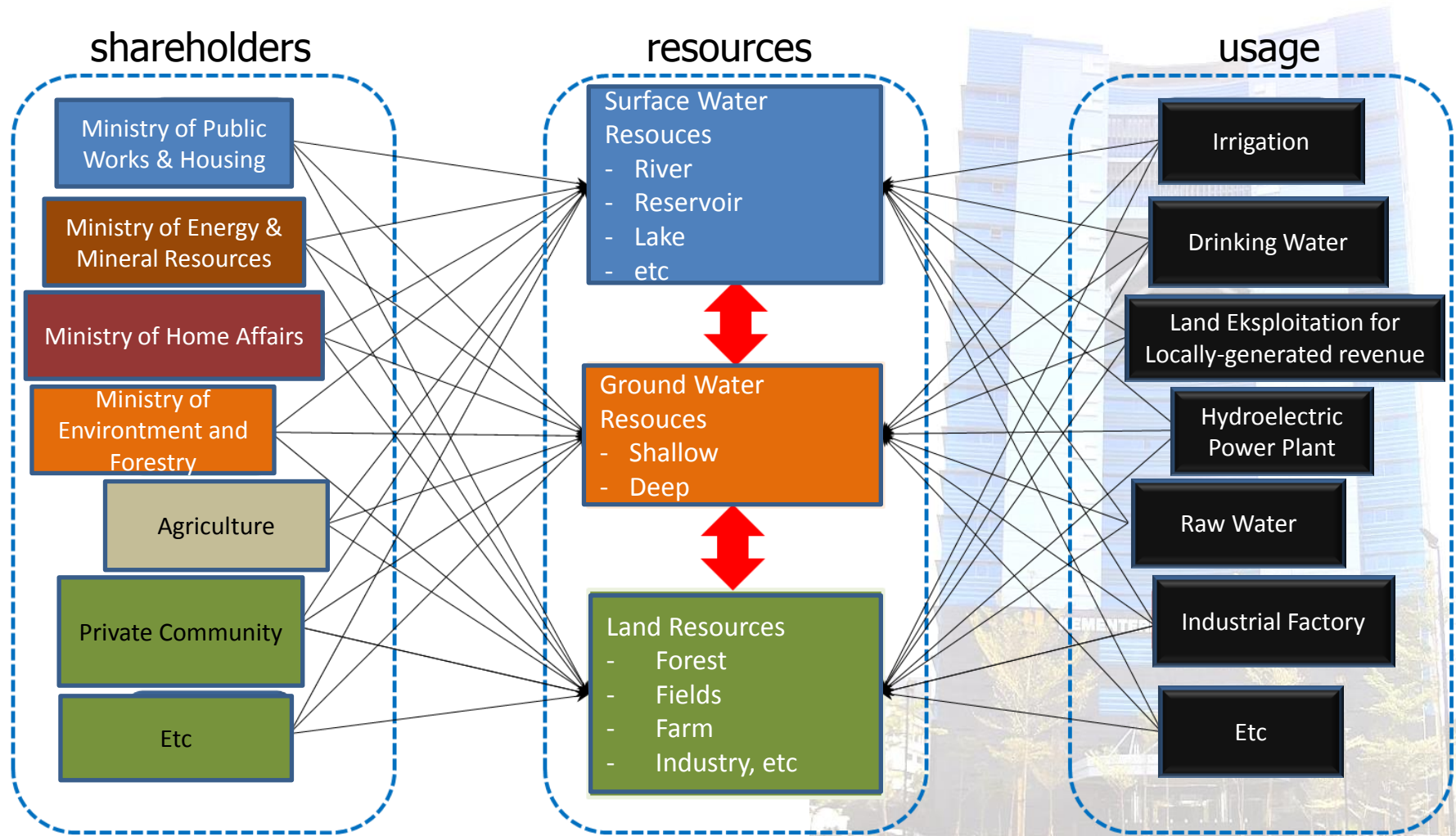
128 River Basin Territory (RBT)

No	Status of River Basin Territory (RBT)	Total of RBT	Authority
1	International Trans-Boundary RBT	5	Central Government
2	Trans-Province RBT	31	Central Government
3	National Strategic RBT	28	Central Government
4	Trans-Regency/ District RBT	52	Provincial Government
5	One Regency/District RBT	12	Regencial Government
Total		128	

Sources :DGWR-MOPWH



The Complexity of Water Resources Management



Everyone deem that they have the right to manage, consume, and exploit
With no integration → degradation of water resources and environment ,
In both quantity and quality

Indonesia's Law of Water Resources approaches to SDG's

Legal basis:
**Water Resource
Law No. 17/2019**

Main Pillars

Water Resource
Conservation

Water Resource
Utilization

Water Harzard
Control & Mitigation

Water resources
information system

Empowerment and
Supervision

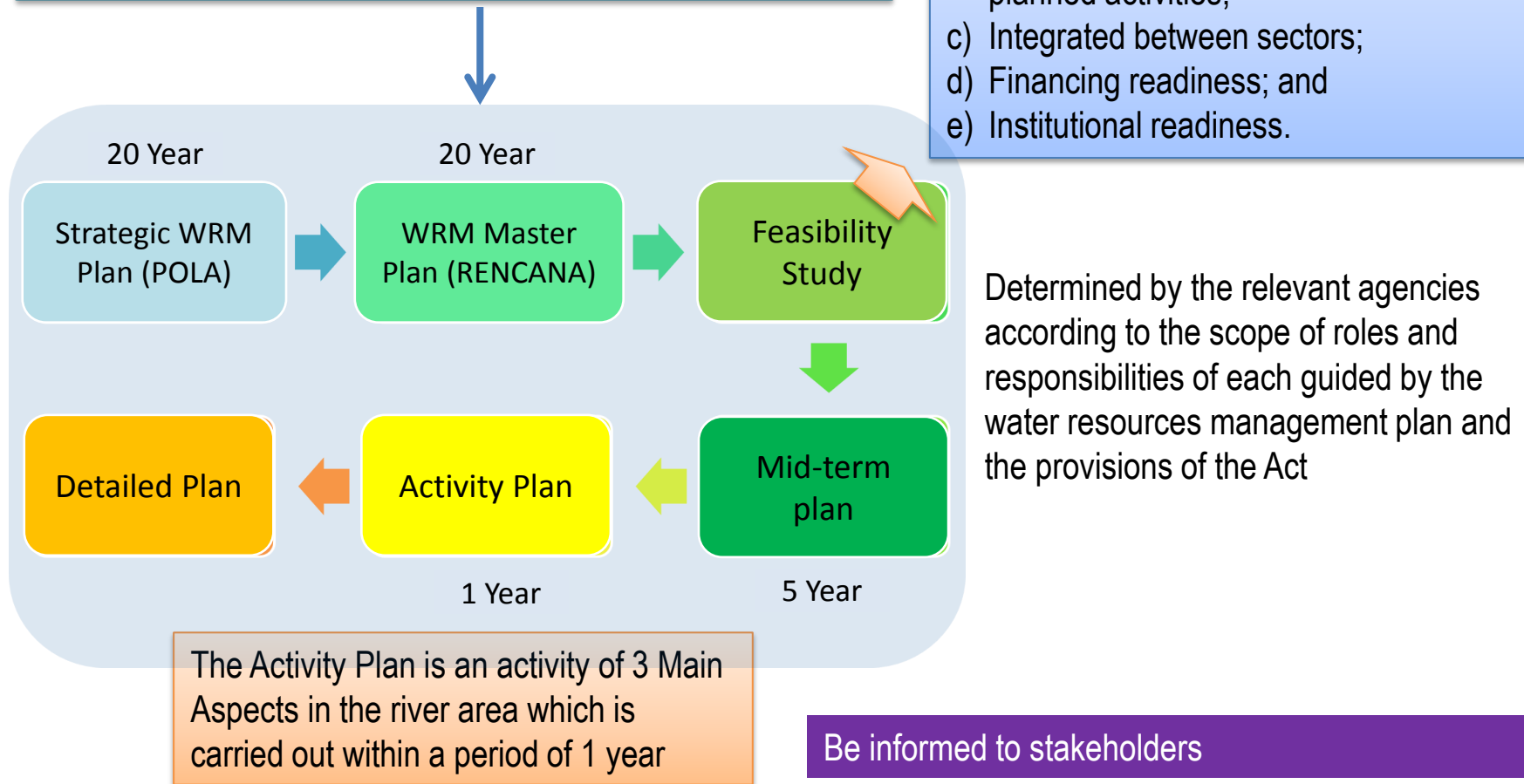
Supporting Pillars



Planning in the Management of Water Resources

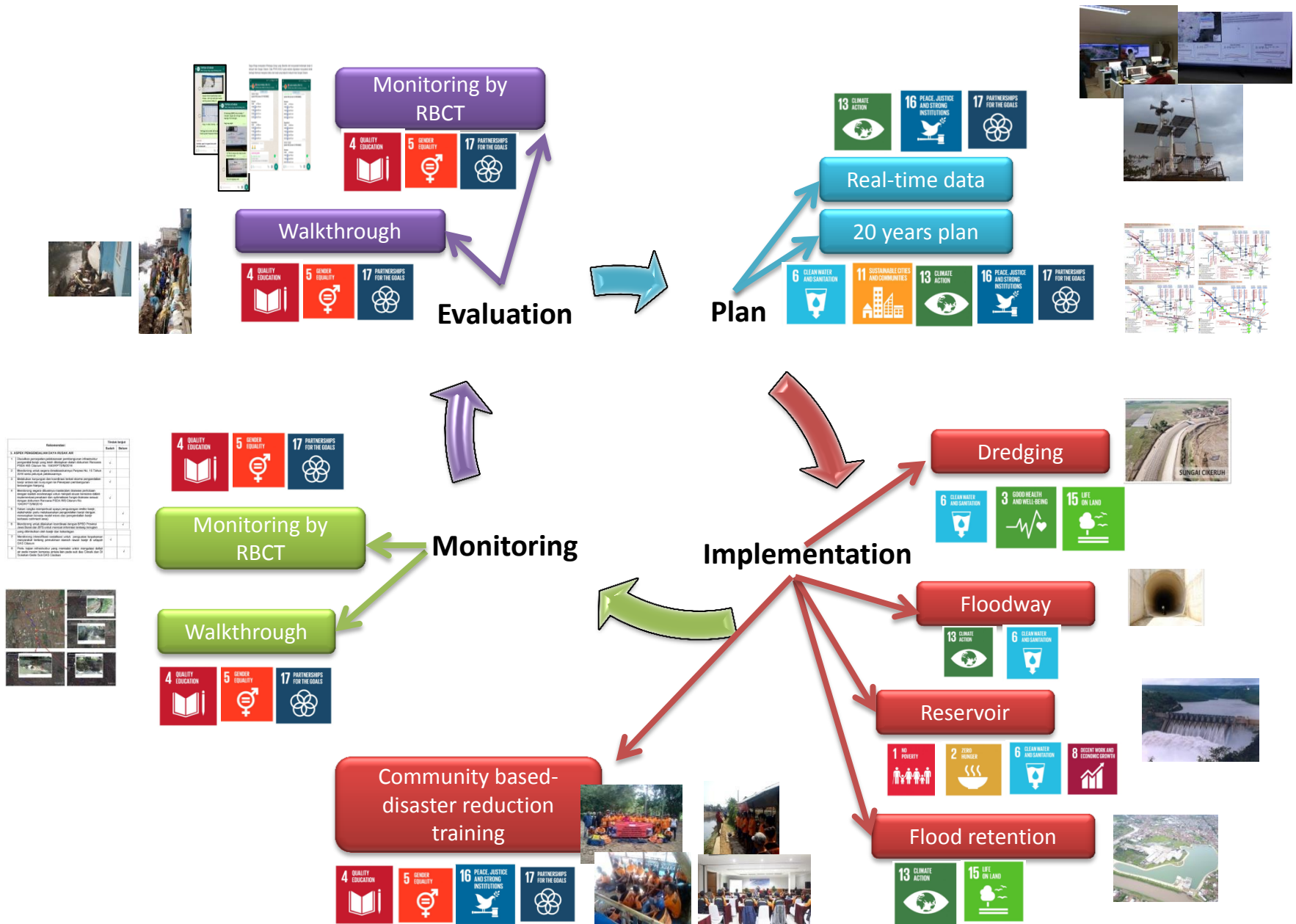
- a) Basic preparation of the program and activity plan every related sector with water resources; and
- b) Input in preparation, review, and / or refinement of regional spatial plans

- a) Technical, economic, social and environmental feasibility;
- b) Community readiness to accept planned activities;
- c) Integrated between sectors;
- d) Financing readiness; and
- e) Institutional readiness.

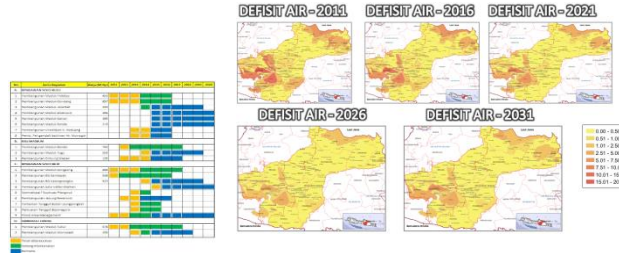


Programming & Activity Plan are carried out in accordance with the provisions of the Act

Flood Resilient



Drought Resilient



Reservoir



Integrated data

Integrated plan

Mitigation

Handling

Rain harvesting-well



Community based training to overcome drought





THANK YOU

