



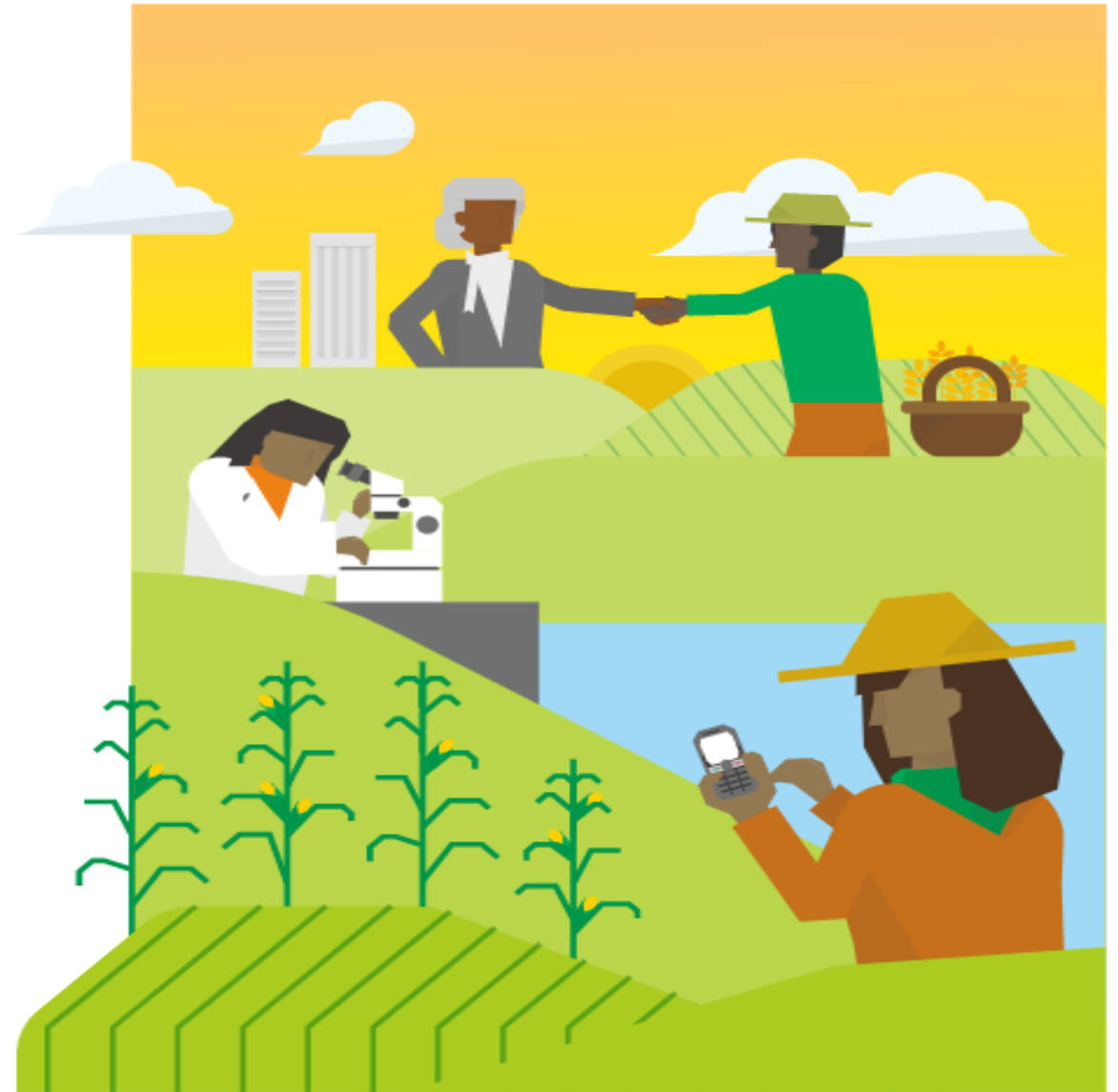
[www.transformingfoodsystems.com/](http://www.transformingfoodsystems.com/)

## Transforming Food Systems Under a Changing Climate

Over 100 partners have come together in a new initiative to identify pathways for food systems transformation.

[ACTION AREAS](#)

[ABOUT THE INITIATIVE](#)



Deissy Martínez Barón, CCAFS/Alliance Bioversity CIAT

# Action areas

## 1. Reroute

farming and rural livelihoods to new trajectories.

## 2. de-Risk

livelihoods, farms and value chains.

## 3. Reduce

emissions through diets and in value chains.

## 4. Realign

policies, finance, innovation, and support to social movements.

### TRANSFORMATIVE ACTIONS

ACTION 1.1

Ensure zero agricultural land expansion in high-carbon landscapes



ACTION 1.2

Enable markets and public sector actions to incentivize climate-resilient and low emission practices

ACTION 1.3

Support prosperity through mobility and rural reinvigoration

ACTION 2.1

Secure resilient livelihoods and value chains through early warning systems and adaptive safety nets

ACTION 2.2

Help farmers make better choices



ACTION 3.1

Shift to healthy and sustainable climate-friendly diets

ACTION 3.2

Reduce food loss and waste



ACTION 4.1

Implement policy and institutional changes that enable transformation

ACTION 4.2

Unlock billions in sustainable finance



ACTION 4.3

Drive social change for more sustainable decisions

ACTION 4.4

Transform innovation systems to deliver impacts at scale

## ACTION 1.1

# Ensure zero agricultural land expansion on high-carbon landscapes

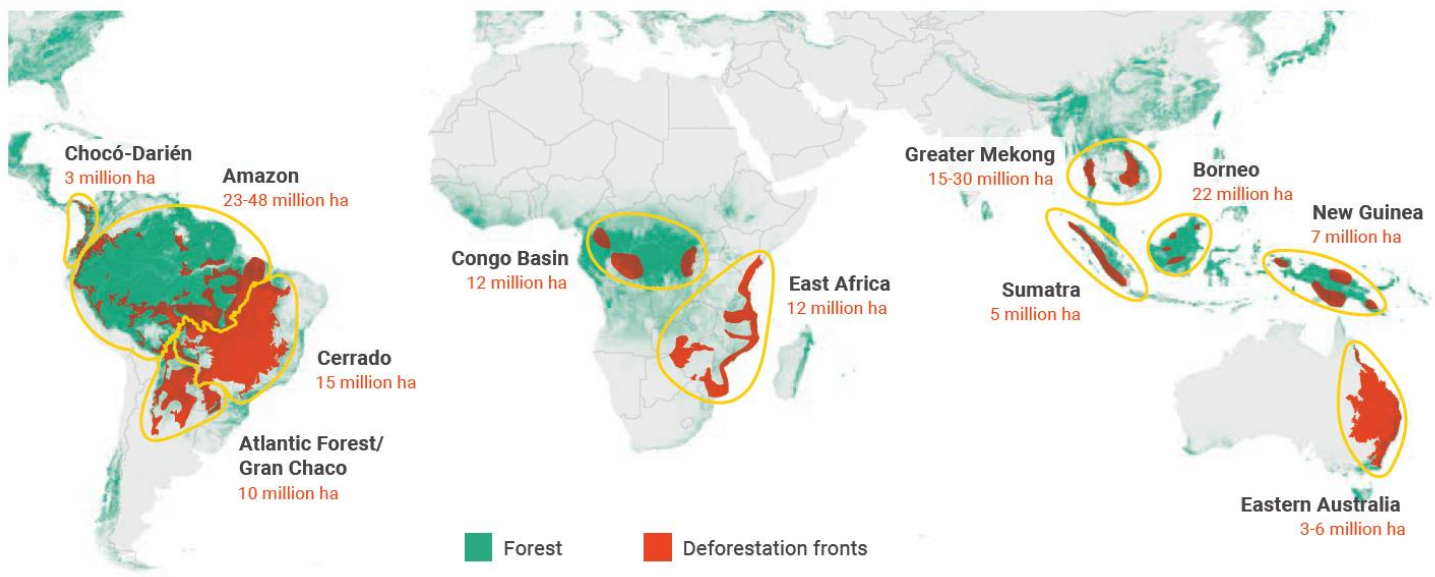
**CHALLENGE 1.1:** Avoid expansion on 250 million hectares of tropical forests and 400 million hectares of peatlands

### HOW:

- Improving transparency and accountability of finance and major commodity supply chains driving conversion of high-carbon landscapes.
- Transforming procurement and supply chain policies
- Using national policy regulation and enforcement, together with real-time remote sensing, to secure and enforce protection of high-carbon landscapes.
- Organizing consumer advocacy and using media to build awareness of the impacts of purchasing decisions.
- Intensification and relocation of commodity agriculture.

**WHERE:** The majority (80%) of global forest loss by 2030 is expected to take place in 11 deforestation fronts, nearly all of which are in the tropics (Figure 11). South America will have the largest losses. Additional high-carbon lands (peatlands, grasslands, and other high-carbon soils) should be similarly mapped and designated as “no-go” zones.

FIGURE 11. The 11 deforestation fronts, with projected losses, 2010–2030



Source: WWF, 2015.<sup>70</sup>

**SDGs contribution >>**

2 ZERO HUNGER  
12 RESPONSIBLE CONSUMPTION AND PRODUCTION  
13 CLIMATE ACTION  
15 LIFE ON LAND



## Help farmers make better choices

**CHALLENGE 2.2:** Take climate services to scale by connecting 200 million farmers and agribusinesses to ICT-enabled bundled advisory services by 2030<sup>102</sup>

### HOW:

- Strengthening capacity to provide actionable climate-informed advisory services to rural communities in climate risk hotspots.
- Developing enabling agricultural insurance solutions for farmers and value chains.
- Connecting the unconnected. Expanding connectivity and access to ICTs.
- Bundling services to reduce costs and enhance value.
- Enabling de-risking services through public-private business cases and regulatory environment
- Developing innovative public-private models to target and reach women, youth and other underserved groups with information and services that address their needs and interests.



# THE TIME TO ACT IS NOW

[www.transformingfoodsystems.com/](http://www.transformingfoodsystems.com/)

**Deissy Martínez Barón,**  
*CCAFS Regional Program Leader for Latin America*  
[d.m.baron@cgiar.org](mailto:d.m.baron@cgiar.org)

 @deissymb



RESEARCH PROGRAM ON  
**Climate Change,  
Agriculture and  
Food Security**



Alliance



International Center for Tropical Agriculture  
Since 1967 Science to cultivate change



FOOD TRANSFORM  
XII