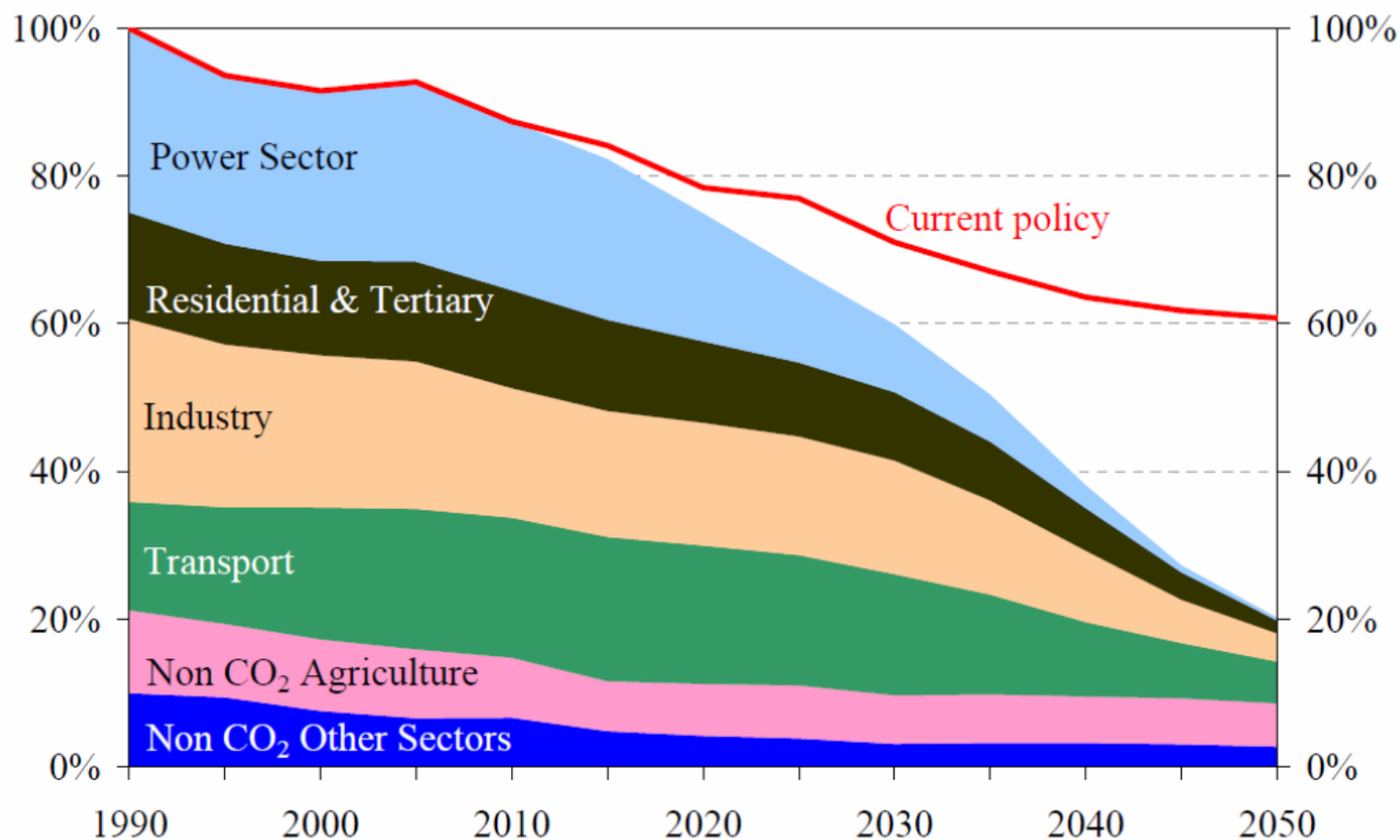


Smart Cities – the European Approach

AIT Austrian Institute of Technology
Energy Department

With the current policy the European CO₂ target for 2050 cannot be reached



Cities – a powerful lever

- 70% of total CO₂ emissions in Europe emerge in and around urban areas



- 74% of the European population lives and works in cities – with a rising trend

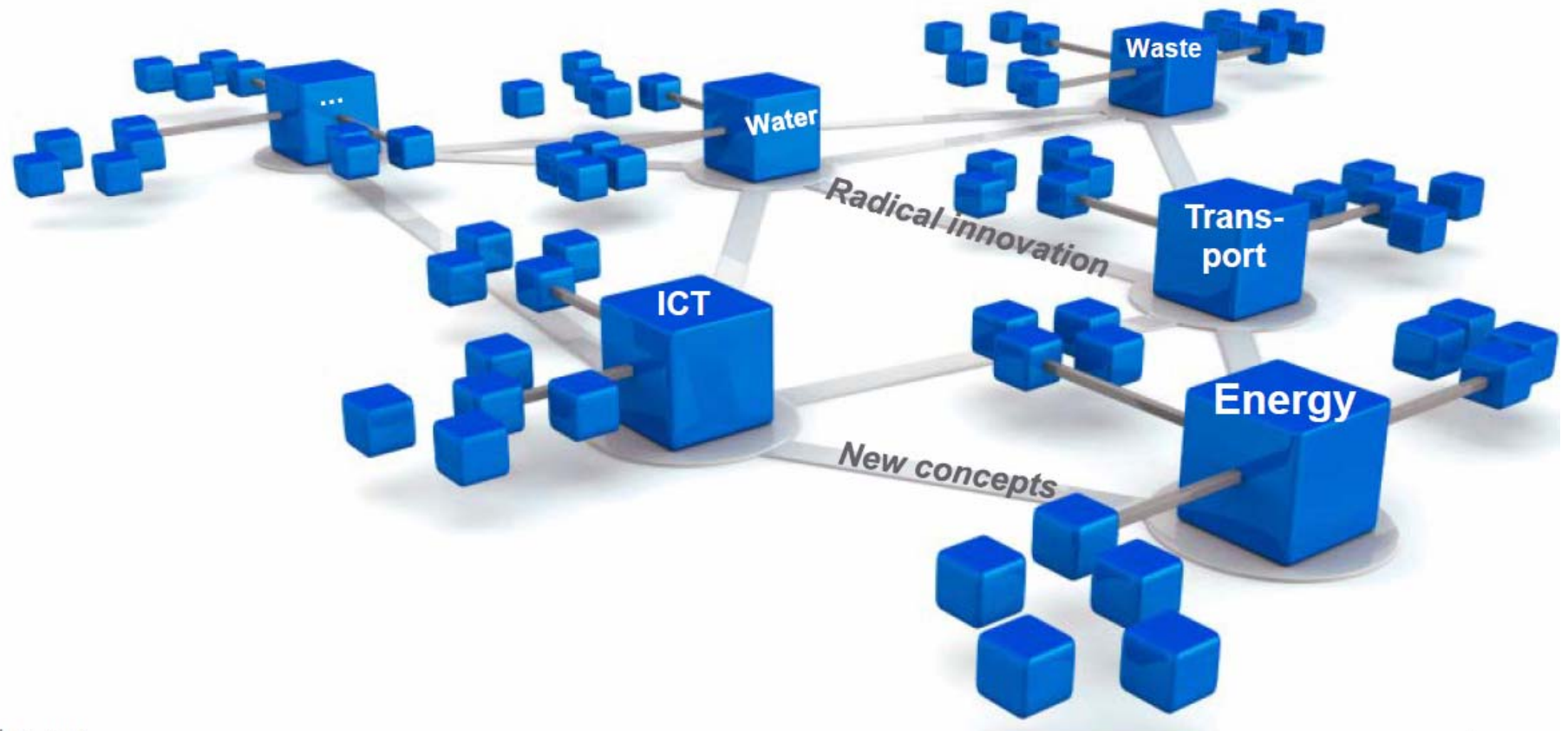
Klimaschädliche Gase: Deutschland hat dem IEA-Be 2012 um 2,2 Prozent erhöht. Quelle: dpa

- They consume 75% of the energy used in the EU

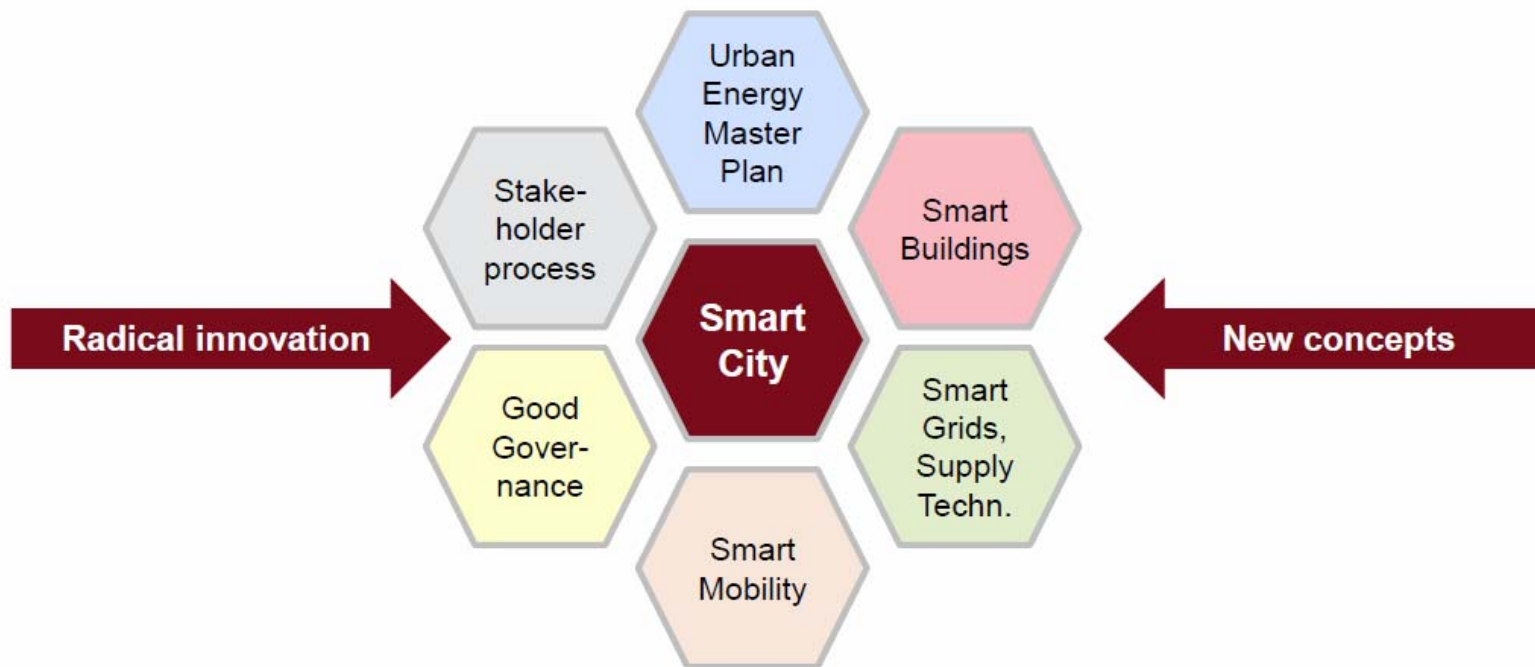




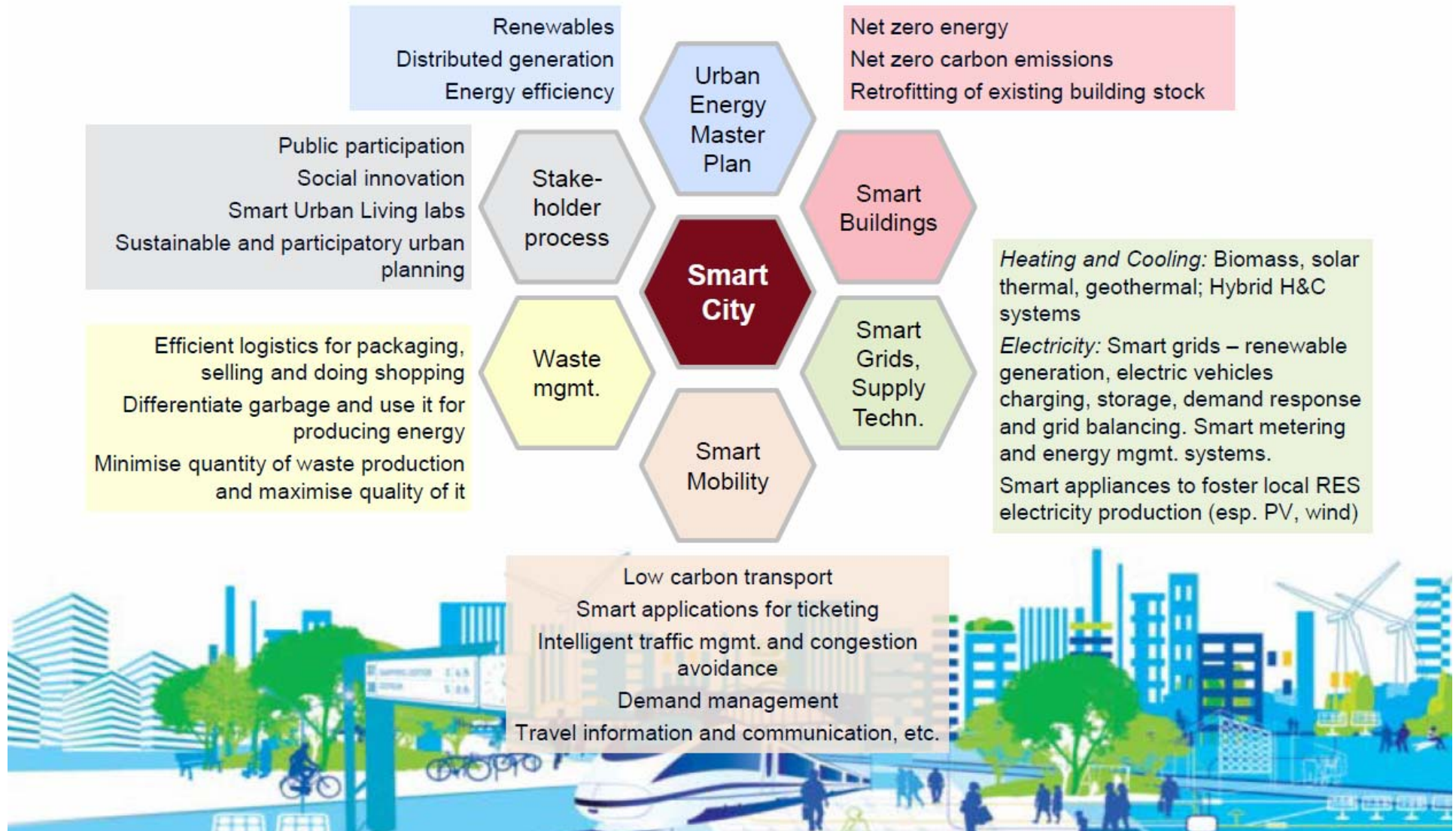
A Smart City integrates processes, concept and technologies to improve the quality of life



Smart City – a multi-technology, multi-disciplinary and co-operative approach



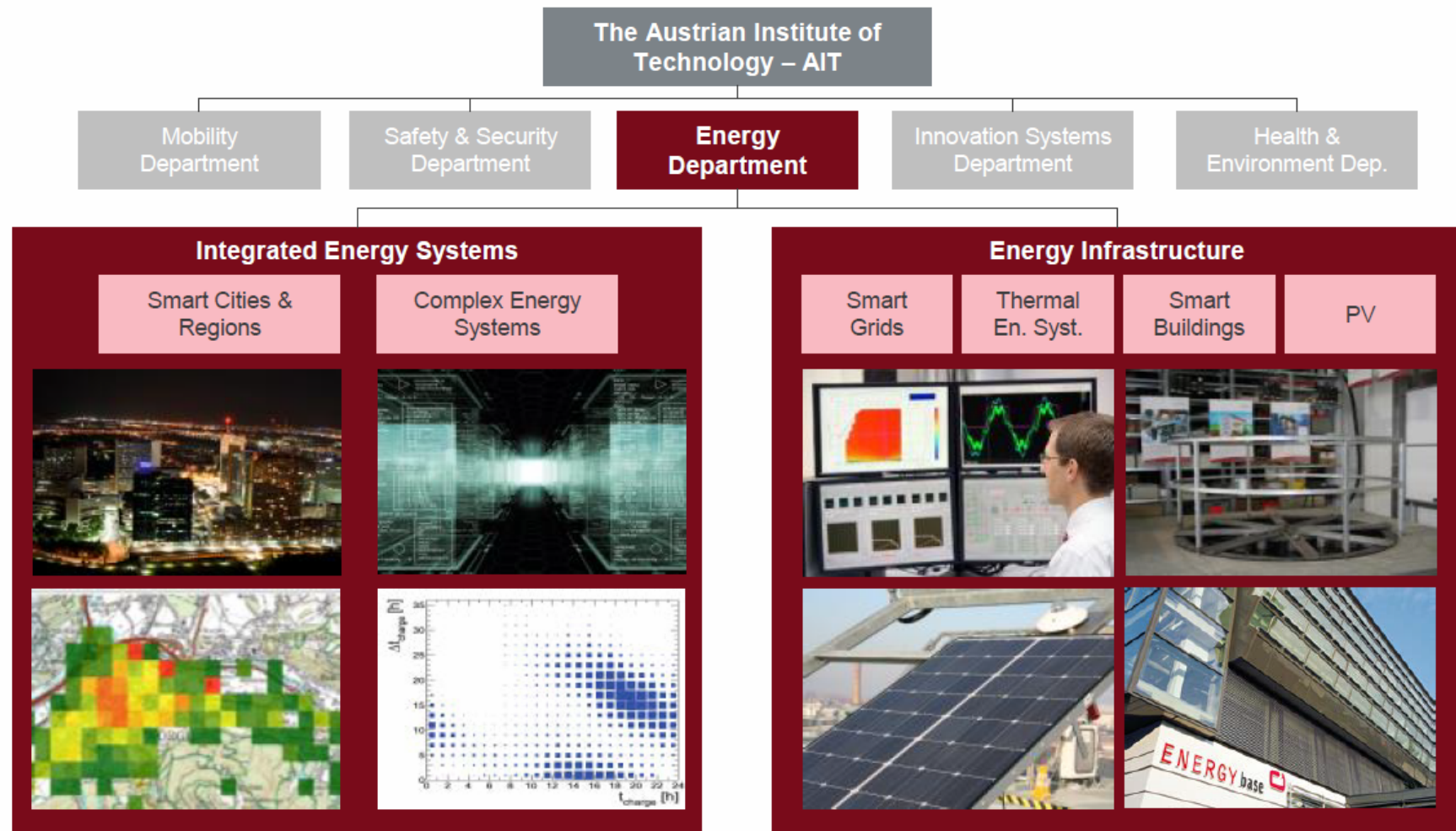
Smart City – a variety of research questions need to be addressed





SMART CITY PROJECTS

The Austrian Institute of Technology is Austria's largest non-university research institute



Smart City Vienna – a Stakeholder Process

Smart Energy Vision 2050



- Qualitative
- Quantitative
 - CO2
 - Energy Efficiency
 - Renewables
 - Modal split

Roadmap for 2020 and beyond



- Scenarios
 - Business as usual
 - Low carbon
 - ...
- Impact of technologies and measures

Action Plan 2015



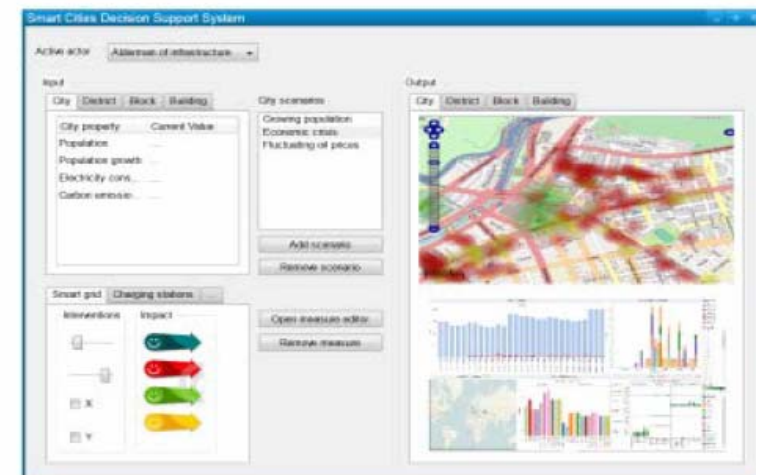
- Measures
- Demonstration projects

TRANSFORMAtion Agenda for Low Carbon Cities



Outcome

- SWOT analysis of all cities and their surroundings
- Transformation agenda based on SWOT, quantitative & qualitative models
- Implementation plan on district level
- “Smart Energy City Handbook” for replication
- Decision support model



Smart City – Challenge & Chance



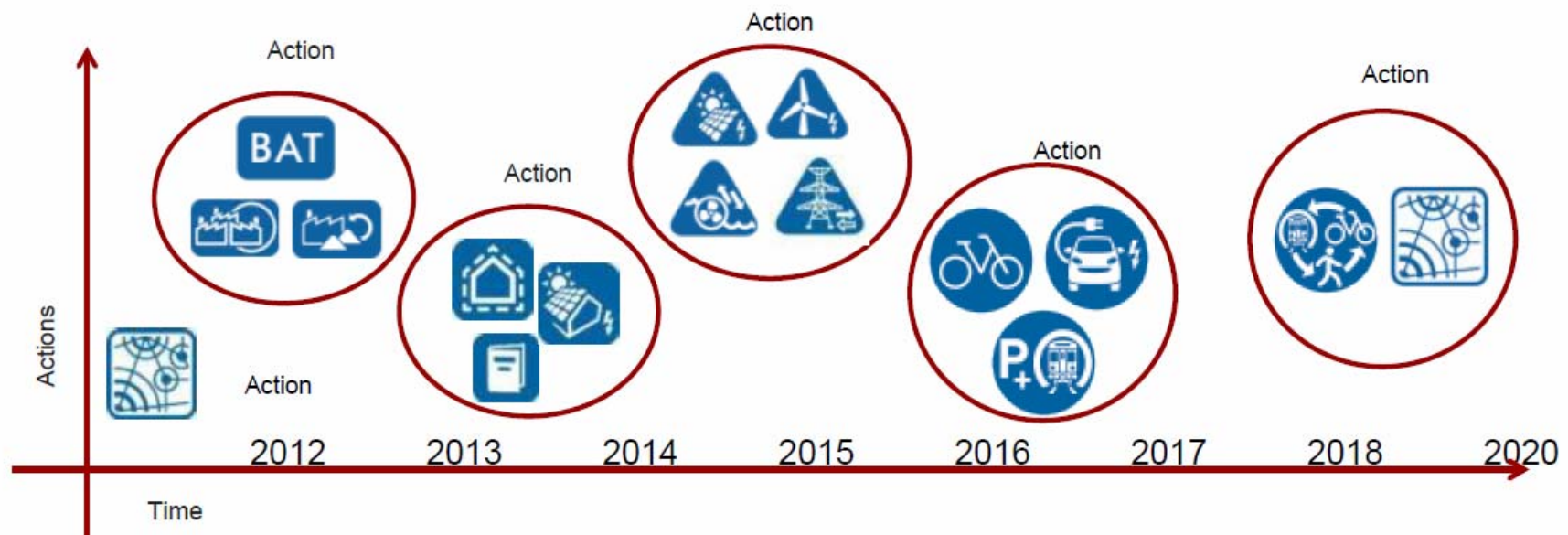
China: Nanchang Low Carbon Action Plan

- Nanchang (Jiangxi) –national low carbon pilot city
 - Population: 2,1 mio (core city); 3,9 mio (urban region)
- Nanchang Low Carbon Action Plan
 - Status quo analysis of the city's carbon emissions
 - Implementation of the national energy & climate policies at the local level
 - Development of KPIs suitable for Nanchang
 - Development of a masterplan and 'actions' for 2012 – 2015
 - Recommendations for existing city strategy and planning documents
- Development areas: Mei Ling, Honggutan, Hi-Tech Development Zone, Jiangxi County



Nanchang - Integrated Low Carbon City Action Plan

Integration of Low Carbon City Measures in the Action Plan



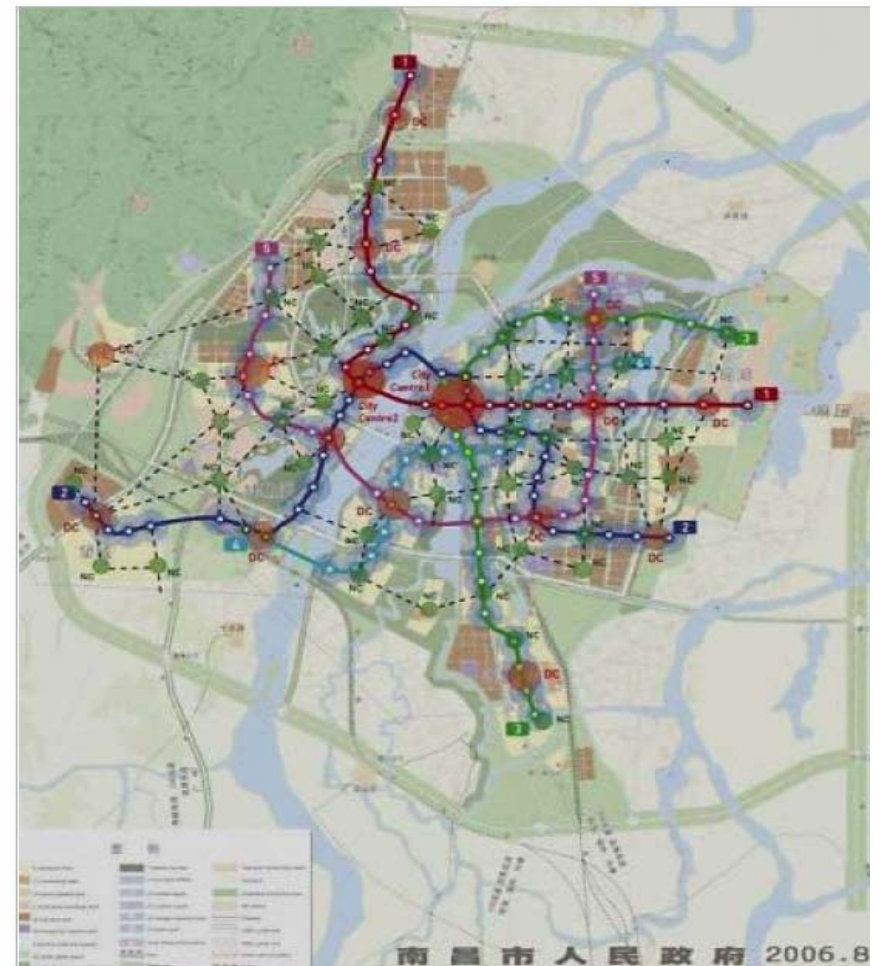
Continuity and phasing of Actions:

- Initiation phase
- Planning phase
- Implementation phase
- Monitoring and reporting phase

Nanchang Recommendations

- Linked poly-centric development of urban structure
- Efficient, coordinated, high capacity public transport network
- Appropriate functional mix

- Bus link
- Neighbourhood Centre
- District Centre
- City Centre 2
- City Centre 1
- Subway catchment area for pedestrians



Su-Tong Ecological (Business) Park



Su-Tong Ecological Park Energy Concept

- Implementation strategies and output benefit analysis for the Initial Area (10km²)
- Urban Design Guides for the Su-Tong Ecological Park
- Demonstration project design briefs
- Energy design guidelines for a circular economy industrial cluster



AIT Austrian Institute of Technology

your ingenious partner