



Basel Convention



Rotterdam Convention



Stockholm Convention

THE BASEL, ROTTERDAM AND STOCKHOLM CONVENTIONS: EXPORT, TRANSIT AND IMPORT CONTROLS

CSD-19 Learning Centre

Hazardous Chemicals and wastes
and sustainable development:
overcoming new and challenges



CONTENT



- The import/transit/export procedures under the **Basel**, **Rotterdam** and **Stockholm** Conventions
- The border control procedures under the **Basel**, **Rotterdam** and **Stockholm** Conventions

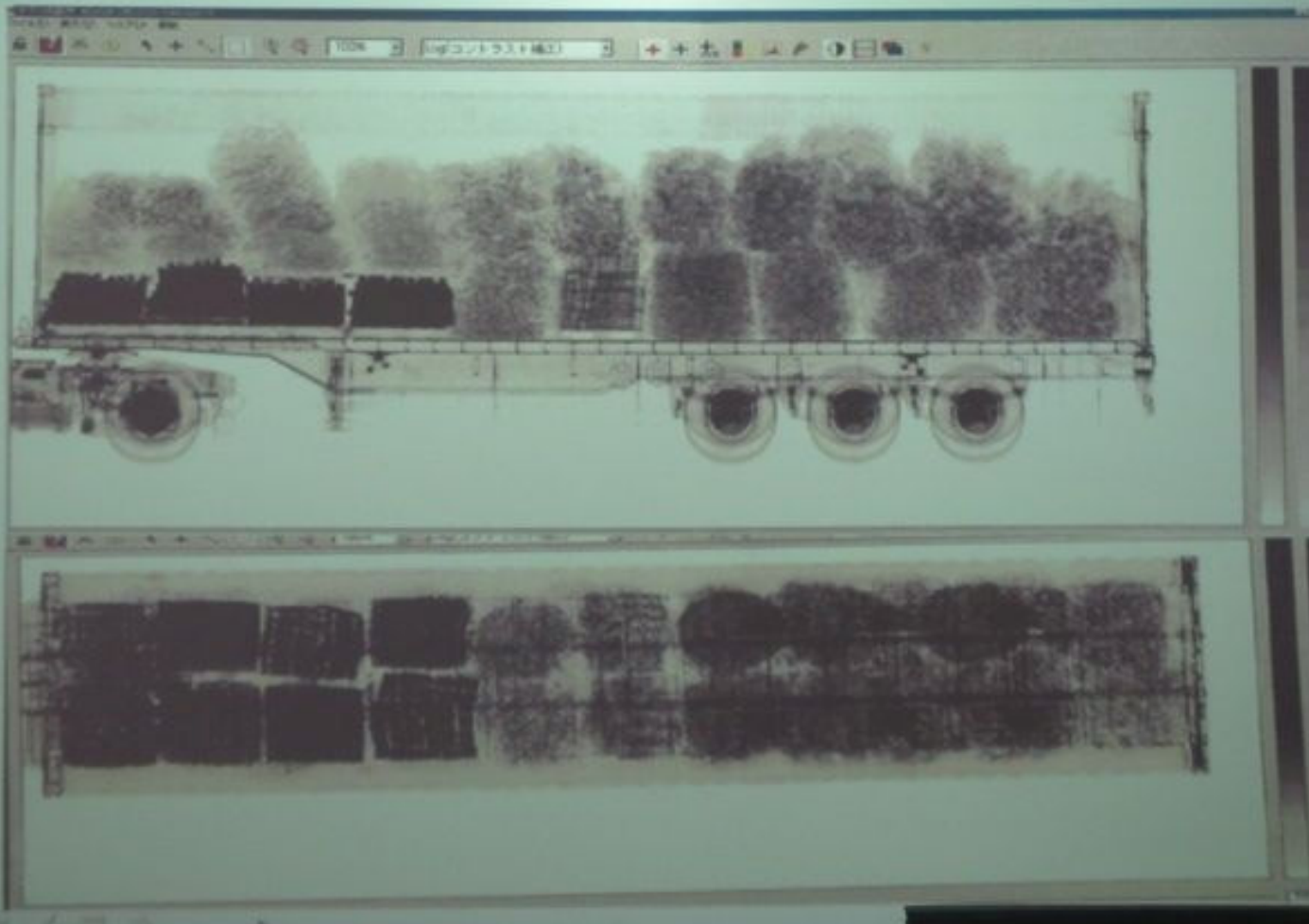
Examples of hazardous wastes shipments



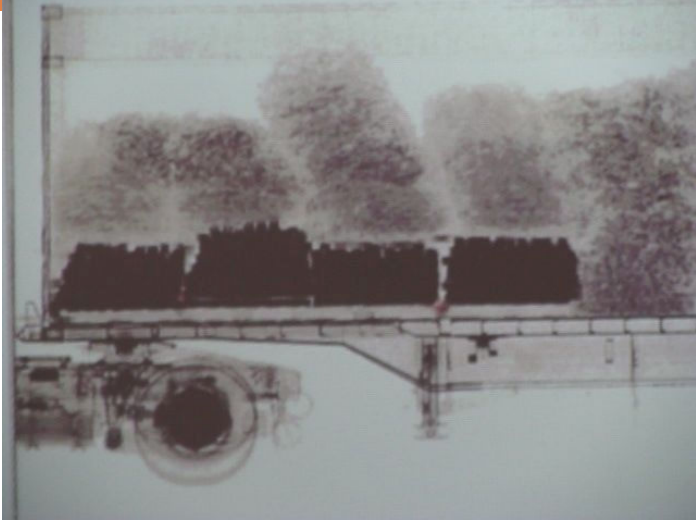




<Export> Used Battery 4322 p/c (declared as Mixed Metal Scrap)







Identification



- Physical identification
 - Visual: eg, glass waste from cathode-ray tubes, contaminated paper waste, household waste, lead-acid batteries, metal cables insulated with plastics...
 - Sample analysis: if waste is liquid or sludge. Will require specific safety measures and expertise

Points of Contact for Assistance

10

- **Basel** – Competent Authority / Focal Point:
<http://www.basel.int/contact-info/frsetmain.html>
- **Rotterdam**– Designated National Authority:
<http://www.pic.int/home.php?type=t&id=8&sid=17&tid=8>
- **Stockholm**– Official Contact Point and National Focal Point for information exchange:
<http://chm.pops.int/Countries/ContactPoints/tabid/304/language/fr-CH/Default.aspx>
- Secretariats of the **Basel** (sbc@unep.org), **Rotterdam** and **Stockholm** Conventions



Thank you for your attention!