

# W.H.Y

**W - Well Being**  
**H - Health**  
**Y - Youth**

Sophia  
In Kim  
Xiaoming Li  
Hong-gyun Lim  
Woo-hyeock Choi

NO COUNTRY FOR OLD MEN


# Contents

- Current Status
- Cause of These Phenomena
- Specific Actions To Achieve These Goals
- Expected Impact And Conclusion

# SDGs Target

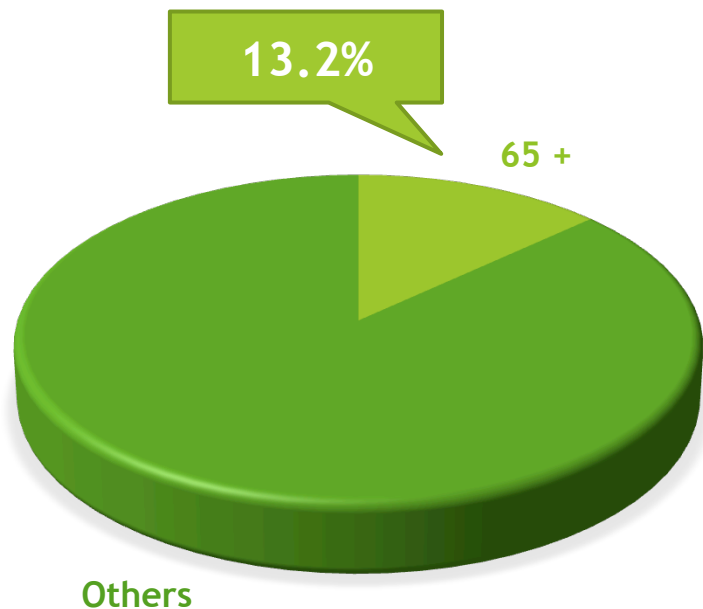


**Well being**  
**Improve quality of life**  
**Psychological well being**



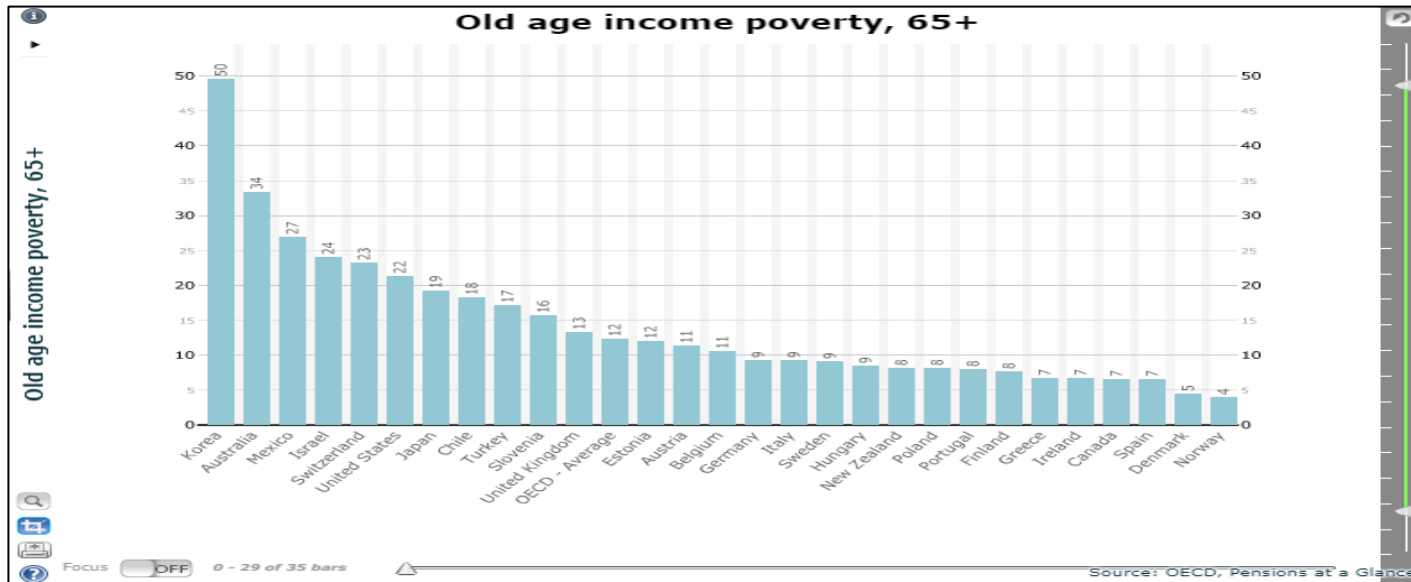
# Current Status

# The elderly Population



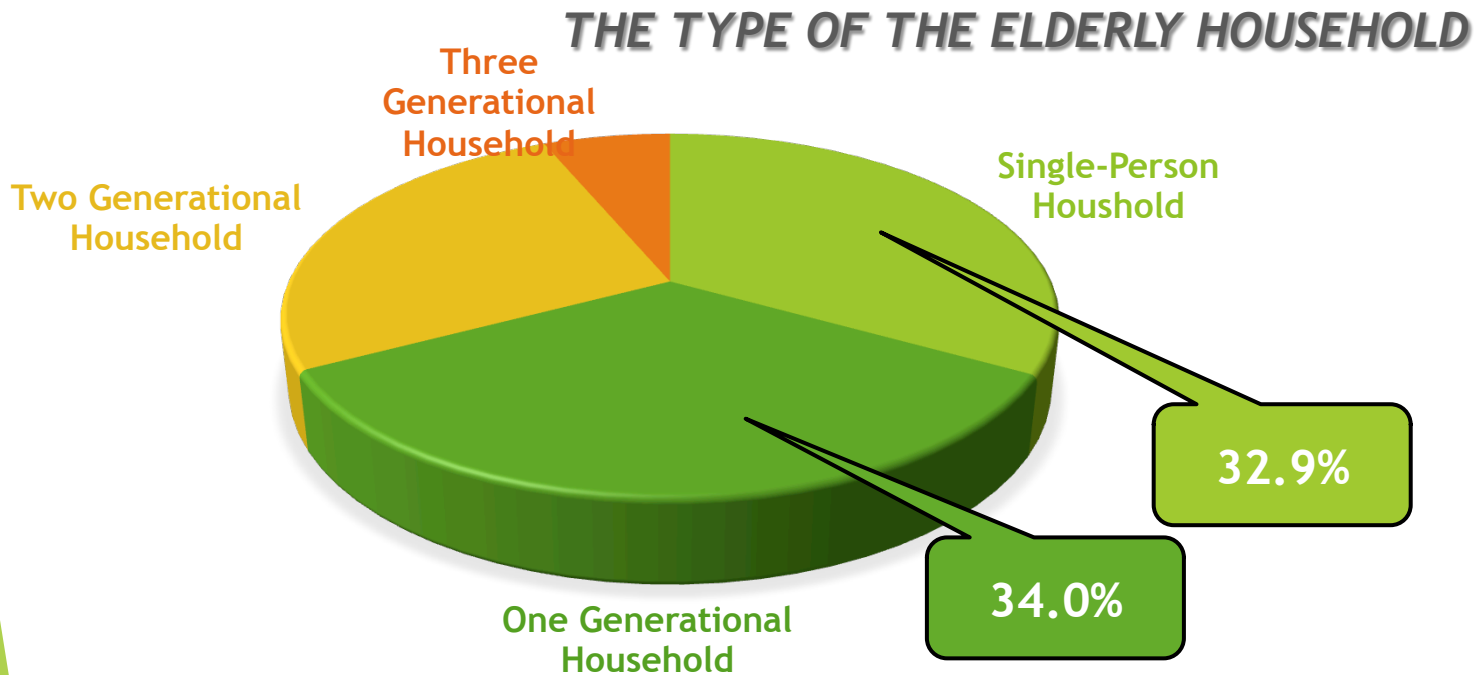
- ▶ As of 2015, the population aged 65 is 6.57 million, and its portion is 13.2% of the total population.
- ▶ The United Nations defined that an aging society is when the population over 65 is over 7% of the total population. Therefore, we can say that our country has entered into an aging society.

# The elderly Poverty



- ▶ This indicator represents the proportion of the elderly who earn cost of living less than 50% of the income of the middle class among the elderly over the age of 65.
- ▶ As the graph shows, Korea is the No.1 among the OECD countries.

# The elderly household rate



- Of the total The elderly households, 32.9% are households living alone, and 34.0% are just one generational household. This shows that there are a lot of households living alone or staying away from their children and living only with the couple.



# The elderly happiness index

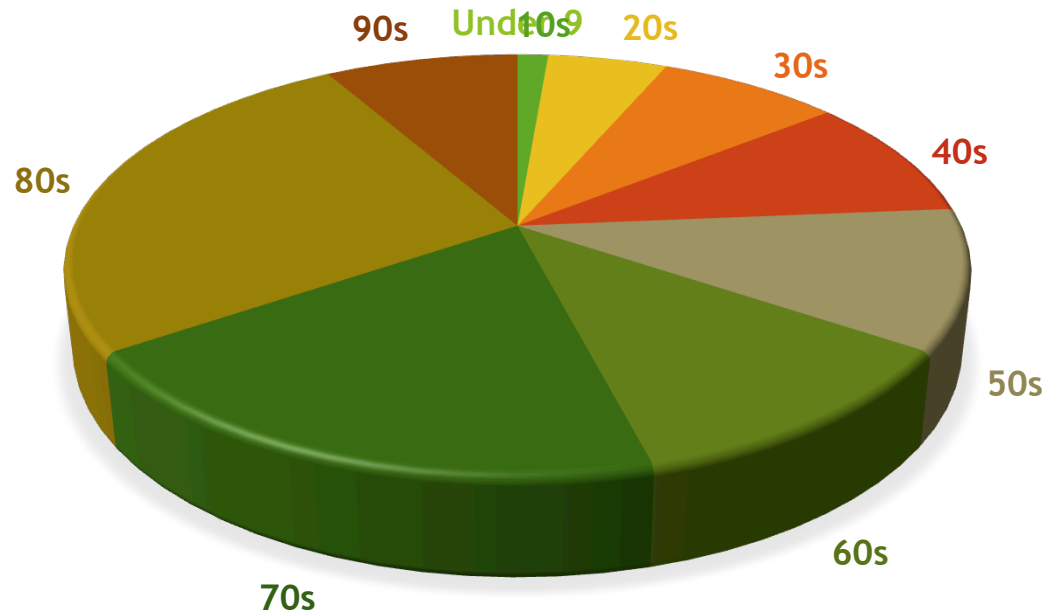
< 연령별 경제행복지수 >



- ▶ The happiness index of over 60 was measured the lowest in all ages.

# The elderly suicide rate

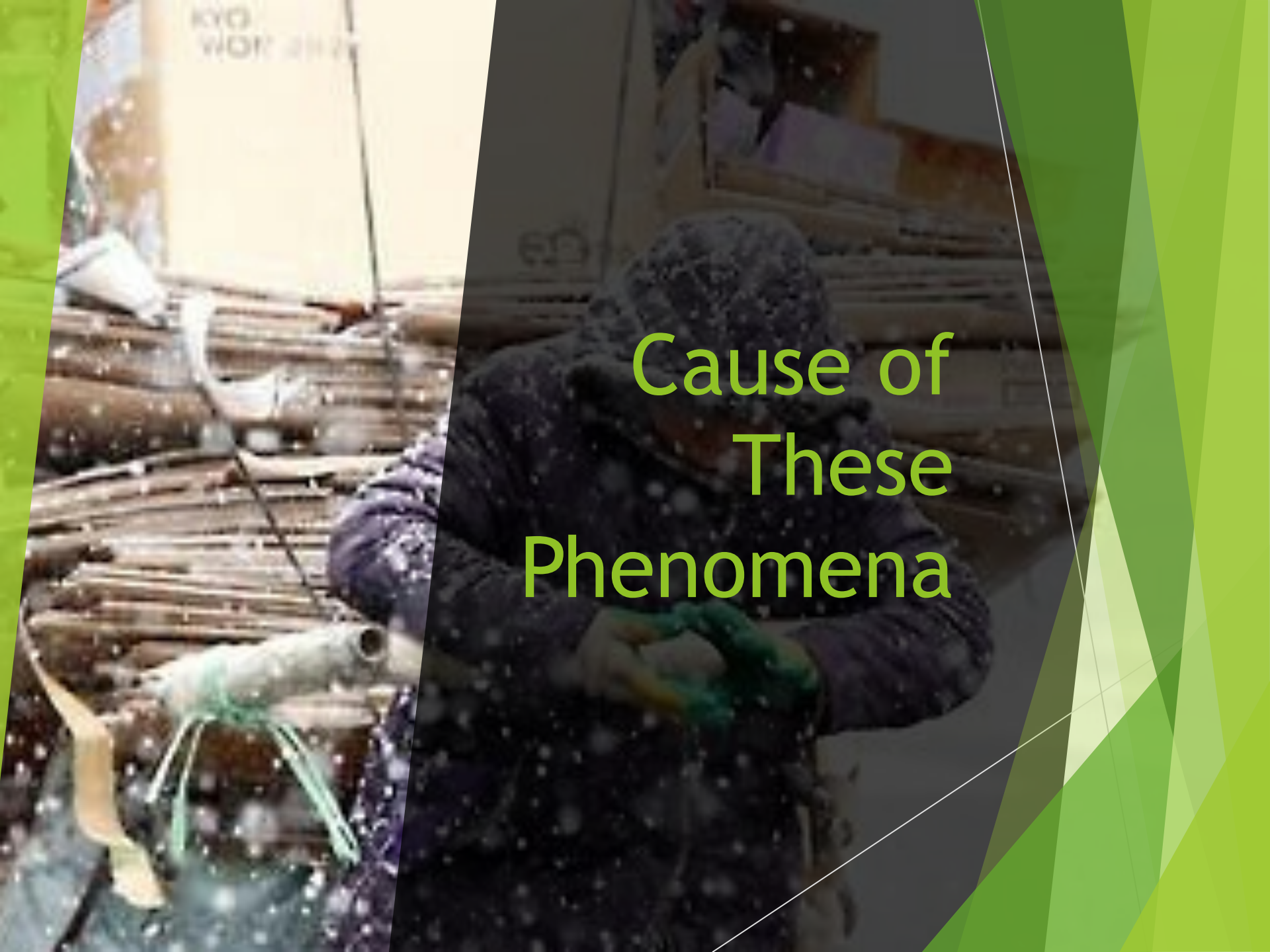
## SUICIDE RATE PER 100THOUSAND IN KOREA



- In Korea, the suicide rate in over 60 has high portion in all age groups.

# Core Problem

Therefore, Korea already has entered an aging society but Korea society has not respond properly, so now Korean society is suffering poverty and suicide of the elderly people.



# Cause of These Phenomena

## Cause of These Phenomena : Change Cognition of Youth

- ▶ Since the traditional Korean old people support system has collapsed due to increasing individualism of the Korean society, we can observe chaos and difficulty in situation that has no new old people support system.



# Cause of These Phenomena : Negative perception about The elderly



- ▶ Negative perception about The elderly
  - The elderly are stubborn.
  - The elderly are useless
  - The elderly can't work properly
  - The elderly are sick



The background image shows a person in a boat, likely a fisherman, holding a large fish. The scene is set on a body of water with a wooden pier or dock visible in the background. The image is partially obscured by a dark, semi-transparent overlay that contains the text. The overall color scheme is dominated by green and blue tones, with a bright green geometric shape on the right side.

# Specific Actions To Achieve These Goals

# Goals

- ▶ Improve youth's Awareness about The elderly
- ▶ Well being life of The elderly

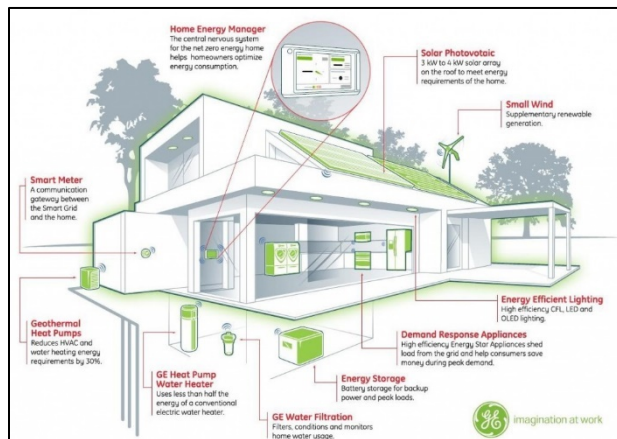




# Specific Actions To Achieve These Goals : Smart Village

## ► Smart House

: In general, Smart House is a house that combines renewable energy and electric vehicles with housing, and optimizes energy use by checking and remotely adjusting energy information by utilizing IT technology



Sustainable Energy

# Specific Actions To Achieve These Goals

## : Role of Youth



- ▶ Partnership between public and private (ppp)

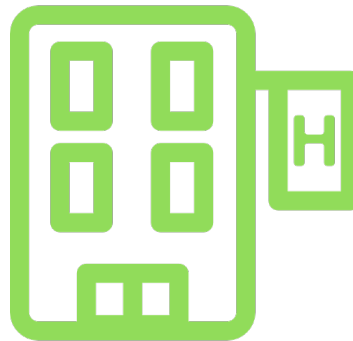
College students can participate in building design.

And they can give creative ideas about sustainable development.

# Specific Actions To Achieve These Goals

## : After Building Complete

- ▶ Tourism
  - ▶ Operated by The elderly
- ▶ Accommodation
  - ▶ Operated by The elderly



The background is a collage of two images. The left image shows a fish, possibly a salmon, lying on a wooden pier or dock. The right image shows a person wearing a dark jacket and a hood, looking down. The text 'Expected Impact And Conclusion' is overlaid in a bright green color on the right side of the collage.

# Expected Impact And Conclusion

# Expected Effect

- ▶ The elderly's well-being life
  - ▶ Achieve physical and psychological well-being life
- ▶ Negative perception settlement
  - ▶ Understanding the elderly through the construction of the Smart Village that preceded the understanding of the elderly and resolving negative stereotypes about the elderly
- ▶ Vitalize sustainable development through youth's participating



# Conclusion



# Reference

## Q & A

- ▶ The elderly rate, National Statistical Office, senior citizen statistics, society statistics the planning section, 2016.09.26
- ▶ The elderly poverty rate, OECD stats, Income and poverty of older people,
- ▶ Aged household statistics, National Statistical Office, Aged statistics, society statistics the planning section, 2016.09.26
- ▶ Suicide statistics Classified by Aged, suicide prevention center
- ▶ Economic happiness index, Hyundai economic researcher, The lowest economic happiness index record after a 5-year hiatus, Heng-gi Back